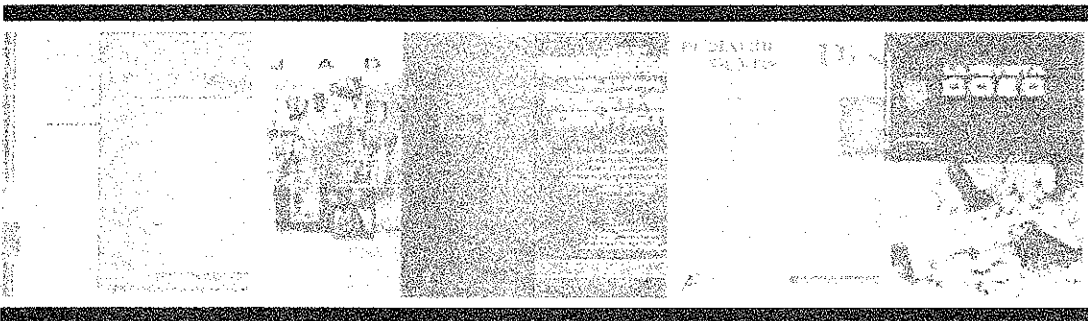


BUTLLETI

DE

SUMARIS

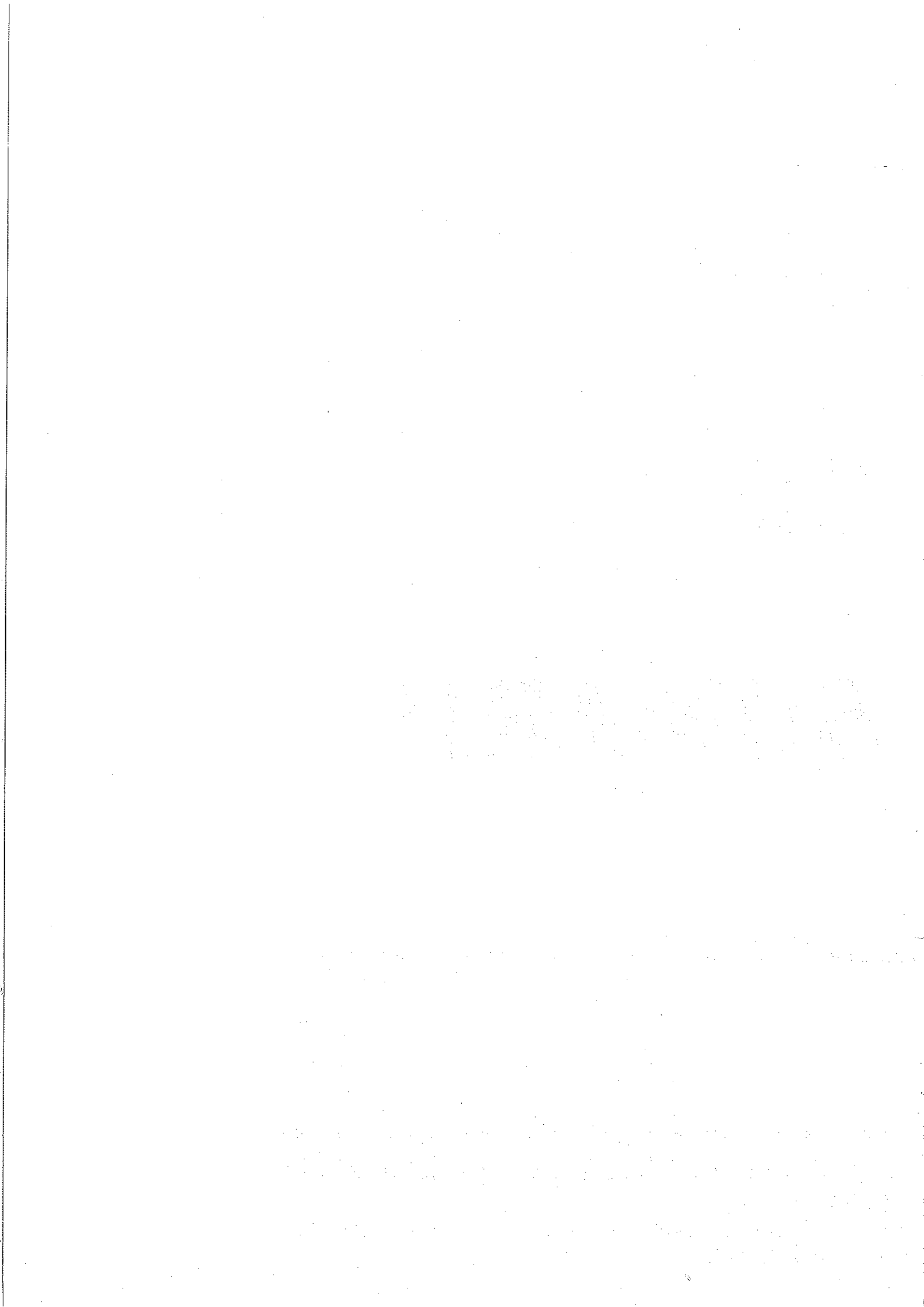
Juliol 2011



COL·LEGI OFICIAL D'ODONTÒLEGS I ESTOMATÒLEGS DE CATALUNYA
BIBLIOTECA.

TRAVESSERA DE GRÀCIA, 93-95 08006 BARCELONA TL. 93 3101555 FAX 93 3101559

e-mail: mnadal@coec.net



PRESENTACIÓN

El propósito principal de un Boletín de Sumarios es la máxima difusión de la información actualizada que proporcionana las publicaciones periódicas. El Boletín de Sumarios del COEC reúne, mensualmente, los sumarios de las revistas de Odontoestomatología y de materias afines que se reciben en la Biblioteca.

En cada número se da la relación de los títulos de estas revistas a continuación de la presentación. Los sumarios estan ordenados, en el Boletín, alfabéticamente por el título, siendo también accesibles por la materia general de la revista mediante el Indice de Materias del Boletín.

Esta compilación bibliográfica permite aproximar el perfil de interés del lector al contenido de las principales publicaciones periódicas de Odontoestomatología, sin necesidad de estar suscrito a ellas. Todas las revistas relacionadas se encuentran en la Biblioteca, de manera que el usuario puede pedir, si le interesa, copia de cualquier artículo citado.

REVISTAS INCLUIDAS EN NUESTRO BOLETIN

- Acta odontologica Scandinavica
- American Jnl. of Orthodontics & Dentofacial Orthopedics
- Angle Orthodontist
- Avances en Odontoestomatología
- Avances en Periodoncia e Implantología oral
- Boletín COEA. (IL. Col. Of. De Odont. Y Estomatol. De Alicante)
- British Dental Journal
- Clinical Oral Implant Research
- Dental Abstracts
- Dental Economics
- Dental Practice
- European Jnl. of Orthodontics
- Gaceta dental
- International Journal of Oral and Maxillofacial Implants
- Journal of the American Dental Association
- Journal of Clinical Periodontology
- Journal of Prosthetic Dentistry
- Maxillaris
- Oral Surgery, Oral Medicine, Oral Pathology
- ORIS
- Quintessence

MATERIA	TITOL DE LA REVISTA	pag
BIBLIOGRAFIA DENTAL	Dental Abstracts. Vol.56 Núm.2,3 (març-abril, maig-juny 2011)	15
CIRURGIA ORAL	Oral Surgery, Oral Medicine, Oral Pathology Vol. 112 Núm.1 (juliol 2011)	31
COL.LEGIS PROFESSIONALS	Oris. Vol.72 Núm.1 (2011)	33
ECONOMIA DENTAL	Dental Economics. Vol.17 Núm.3(2011)	18
IMPLANTS DENTALS	Clinical Oral Implants Research. Vol.22 Núm.7,8 (juliol, agost 2011)	12
	JOMI. Vol.26 Núm.3 (2011)	24
MATERIALS DENTALS	Dental Materials. Vol.27 Núm.7 (juliol 2011)	19
ODONTOSTOMATOLOGIA	Acta Odontologica Scandinavica. Vol.69 Núm.4 (juliol 2011)	1
	Avances en Odontostom. Vol.27 Núm.4 (juliol-agost 11)	8
	British Dent. Jnl. Vol.211 Núm.1 (juliol 2011)	10
	Dental Practice. Vol.6 Núm.3 (maig, juny 2011)	20
	Gaceta Dental Núm.227 (juliol 2011)	23
	JADA. Vol.6 Núm.3 (juny 2011)	28
	Maxillaris. Núm.145 (juliol 2011)	29
	Quintessence. Vol.24 Núm.7 (agost-setembre 2011)	34
ORTODÒNCIA	American Jnl. Of Orthod. Vol.140 Núm.1 (juliol 2011)	3
	Angle Orthodontist. Vol.81 Núm.4 (juliol 2011)	6
	European jnl. of Orthodontics Vol.33 Núm.3 (juny 2011)	22
PERIODÒNCIA	Avances en Periodoncia e Implantología Oral Vol.23 Núm.2 (agost 11)	9
	Jnl. of Clinical Perio. Vol.38 Núm.7 (juliol 2011)	26
PRÒTESI DENTAL	Jnl. of Prosthetic Dentistry. Vol.106 Núm.1 (juliol 2011)	27

ACTA ODONTOLOGICA SCANDINAVICA

CONTENTS

VOLUME 69

NUMBER 4

JULY 2011

REVIEW ARTICLE

- A dental look at the autistic patient through orofacial pain** 193
Fares Zeidán-Chuliá, Ulvi K. Gursoy, Eija Könönen & Carmem Gottfried

ORIGINAL ARTICLES

- Osteoporosis and periodontitis in older subjects participating in the Swedish National Survey on Aging and Care (SNAC-Blekinge)** 201
Stefan Renvert, Johan Berglund, Rigmor E. Persson & G. Rutger Persson
- Oral health-related quality of life and associated factors in Norwegian adults** 208
Kari Elisabeth Dahl, Nina J. Wang, Irene Skau & Kerstin Öhrn
- Effect of location of glass fiber-reinforced composite reinforcement on the flexural properties of a maxillary complete denture *in vitro*** 215
Yutaka Takahashi, Kaneyoshi Yoshida & Hiroshi Shimizu

(Continued on Back Cover)

informa
healthcare

ACTA ODONTOLOGICA SCANDINAVICA

CONTENTS *(Continued)*

- Association between the inclination of the lateral incisors and the position of the erupting canines on panoramic radiographs** 222
Giulio Alessandri Bonetti, Serena Incerti Parenti, Sergio De Rinaldis & Ida Marini
- The influence of support properties and complexity on fracture strength and fracture mode of all-ceramic fixed dental prostheses** 229
Deyar Jallal Hadi Mahmood, Ewa H. Linderöth & Per Vult Von Steyern
- Misfit of pure titanium frameworks: Effect of veneer coverage and spark erosion process** 238
Marcia Mika Nakaoka, Juliana Maria Costa Nuñez Pantoja, Jessica Mie Ferreira Koyama Takahashi, Rafael Leonardo Xediek Consani & Marcelo Ferraz Mesquita
- Dental fear and alexithymia among adults in Finland** 243
Vesa Pohjola I, Aino K. Mattila, Matti Joukamaa & Satu Lahti
- Maternal dental caries and pre-term birth: Results from the EPIPAP study** 248
Jean-Noel Vergnes, Monique Kaminski I, Nathalie Lelong, Anne-Marie Musset, Michel Sixou & Cathy Nabet

How good are you?. Editorial. pg. 1

Heuristic reasoning and cognitive biases. Letter. Bach, R.M. pg. 2

Problematic sample in the study of interception of palatally displaced canines. Letter pg. 2-3 Peck, Sheldon

Problematic sample in the study of interception of palatally displaced canines. Letter pg. 3-4 Bonetti, G. A.

Study clubs. Letter pg. 4 Tanaka, O. M.

Communication in the face of conflict. Miscellaneous pg. 5 Greco, Peter M.

Evaluation and management of asymptomatic third molars: Lack of symptoms does not equate to lack of pathology. Miscellaneous pg. 10,12,14,16 White, R.P.; Proffit, W.R.

Evaluation and management of asymptomatic third molars: Watchful monitoring is a low-risk alternative to extraction. Miscellaneous pg. 11,13,15 Kandasamy, S.

Temporomandibular joint and normal occlusion: Is there anything singular about it? A computed tomographic evaluation. pg. 18-24 Vitral, R.W.F.; da Silva Campos, M.J.; Rodrigues, A.

Galvanic corrosion between various combinations of orthodontic brackets and archwires. pg. 25-31 Bakhtari, A.; Bradley, T.G.; Lobb, W.K.

Mandibular second molar impaction. Part I: Genetic traits and characteristics. pg. 32-37 Shapira, Y.; Finkelstein, T.; Shpack, N.

Chincup treatment modifies the mandibular shape in children with prognathism. pg. 38-43 Alarcon, J.A.; Bastir, M.; Rosas, A.; Molero, J.

Effects of force magnitude on relapse: An experimental study in rabbits. pg. 44-50 Kilic, N.; Oktay, H.; Ersoz, M.

Evaluation of home disinfection protocols for acrylic baseplates of removable orthodontic appliances: A randomized clinical investigation. pg. 51-57 Peixoto, I.T.A.; Enoki, C.; Ito, I.Y.

Clinical, microbiologic, and immunologic factors of orthodontic treatment-induced gingival enlargement. pg. 58-64 Gong, Y.; Lu, J.; Ding, X.

Comparisons of nanoindentation, 3-point bending, and tension tests for orthodontic wires. pg. 65-71 Iijima, M.; Muguruma, T.; Brantley, W.A.

Factors controlling anterior torque during C-implant-dependent en-masse retraction without posterior appliances. pg. 72-80 Mo, S.S.; Kim, S.H.; Sung, S.J.

Maxillary palatal canine impaction displacement in subjects with congenitally missing maxillary lateral incisors. pg. 81-86 Al-Nimri, K.S.; Bsoul, E.

Method to classify dental arch forms. pg. 87-96 Lee, S.J.; Lee, S.; Lim, J.

Adult Class II Division 1 patient with severe gummy smile treated with temporary anchorage devices. pg. 97-105 Shu, R.; Huang, L.; Bai, D.

Nonsurgical treatment of an adult patient with bilateral posterior crossbite. pg. 106-114 Liu, R.; Xiaoqing, M.; Wamalwa, P.

Spring-loaded bite-blocks for early correction of skeletal open bite associated with thumb sucking. pg. 115-120 Doshi, U.H. ; Bhad, W.A.

Failure after closed traction of an unerupted maxillary permanent canine: Diagnosis and treatment planning. pg. 121-125 Alessandri Bonetti, G.; Incerti Parenti, S.; Daprile, G.

In-office distance learning for practitioners. pg. 126-132 Klein, K.P.; Miller, K.T.; Brown, M.W.

Safeguarding protected health information. pg. 133-135 Jerrold, L.

AAO Officers and Organizations. pg. 136

Cervical vertebral column morphology related to craniofacial morphology and head posture in preorthodontic children with Class II malocclusion and horizontal maxillary overjet. pg. e1-e7 Arntsen, T.; Sonnesen, L.

Analysis of genetic polymorphisms in skeletal Class I crowding. pg. e9-e15 Ting, T.Y.; Wong, R.W.; Rabie, B.A.

White-spot lesions during multibracket appliance treatment: A challenge for clinical excellence. pg. e17-e24 Enaia, M.; Bock, N.; Ruf, S.

Cone-beam computed tomography to detect erosions of the temporomandibular joint: Effect of field of view and voxel size on diagnostic efficacy and effective dose. pg. e25-e30 Librizzi, Z.T. ; Tadinada, A.S. ; Valiyaparambil, J.V.

Effects of bisphosphonates on sutural bone formation and relapse: A histologic and immunohistochemical study. pg. e31-e41 Ozturk, Frat

Spectrophotometric evaluation of color alterations with a new dental bleaching product in patients wearing orthodontic appliances. pg. e43-e47 Jadad, Enrique

Physical properties of root cementum: Part 19. Comparison of the amounts of root resorption between the right and left first premolars after application of buccally directed heavy orthodontic tipping forces. pg. e49-e52 Ho, C.

The

ANGLE ORTHODONTIST

An International Journal of Orthodontics and Dentofacial Orthopedics since 1930

Volume 81, Number 4, July 2011

Original Articles

- 557 **Can commonly used profile planes be used to evaluate changes in lower lip position?**
Peter H. Buschang, Kimberly Fretty, Phillip M. Campbell
- 564 **Molar height and dentoalveolar compensation in adult subjects with skeletal open bite**
Josef Kucera, Ivo Marek, Hana Tycova, Tiziano Baccetti
- 570 **Tooth movement and root resorption; The effect of ovariectomy on orthodontic force application in rats**
Irin Sirisoontorn, Hitoshi Hotokezaka, Megumi Hashimoto, Carmen Gonzales, Suwanee Luppanapornlarp, M. Ali Darendeliler, Noriaki Yoshida
- 578 **Cephalometric features in isolated growth hormone deficiency**
Luiz Alves Oliveira-Neto, Maria de Fátima B. Melo, Alexandre A. Franco, Alaíde H.A. Oliveira, Anita H.O. Souza, Eugênia H.O. Valença, Isabela M.P.A. Britto, Roberto Salvatori, Manuel H. Aguiar-Oliveira
- 584 **Spatial changes in the relationship of the mandible and maxilla with different extraction patterns and techniques**
Douglas H. MacGilpin, Eustaquio A. Araujo, Rolf G. Behrents, Kenneth B. Rowan
- 592 **Mechanical loading activates β -catenin signaling in periodontal ligament cells**
Sundaralingam Premaraj, Isabela Souza, Thyagaseely Premaraj
- 600 **Expression of LIF and LIFR in periodontal tissue during orthodontic tooth movement**
Yude Liang, Yi Zhou, Tao Jiang, Zhen Zhang, Su Wang, Yining Wang
- 609 **Periodontal health and relative quantity of subgingival *Porphyromonas gingivalis* during orthodontic treatment**
Hongyan Liu, Jinglu Sun, Yilei Dong, Hui Lu, Humin Zhou, B. Frode Hansen, Xiaobo Song
- 616 **Arch dimension changes from successful slow maxillary expansion of unilateral posterior crossbite**
Christian Alexander Wong, Peter M. Sinclair, Robert G. Keim, David B. Kennedy
- 624 **The relationship between temporomandibular joint disk displacement and mandibular asymmetry in skeletal Class III patients**
Hyung-Joo Choi, Tae-Woo Kim, Sug-Joon Ahn, Shin-Jae Lee, Richard E. Donatelli
- 632 **Changes in hyoid bone position following rapid maxillary expansion in adolescents**
Austin Phoenix, Manish Valiathan, Suchitra Nelson, Kingman P. Strohl, Mark Hans
- 639 **Effects of facemask treatment anchored with miniplates after alternate rapid maxillary expansions and constrictions; A pilot study**
Demet Kaya, Ilken Kocadereli, Bahadır Kan, Ferda Tasar
- 647 **Evaluation of incisor position and dental transverse dimensional changes using the Damon System**
Rohini Vajaria, Ellen BeGole, Budi Kusnoto, Maria Therese Galang, Ales Obrez
- 653 **Friction properties according to vertical and horizontal tooth displacement and bracket type during initial leveling and alignment**
Wook Heo, Seung-Hak Baek
- 662 **Analysis of lingual en masse retraction combining a C-lingual retractor and a palatal plate**
Jun-Shik Kim, Seong-Hun Kim, Yoon-Ah Kook, Kyu-Rhim Chung, Gerald Nelson
- 670 **3-Dimensional cone-beam computed tomography analysis of transverse changes with Schwarz appliances on both jaws**
Kiyoshi Tai, Jae Hyun Park, Katsuaki Mishima, Je-Won Shin
- 678 **Effectiveness of comprehensive fixed appliance treatment used with the Forsus Fatigue Resistant Device in Class II patients**
Lorenzo Franchi, Lisa Alvetto, Veronica Giuntini, Caterina Masucci, Efisio Defraia, Tiziano Baccetti
- 684 **Treatment and posttreatment outcomes induced by the Mandibular Advancement Repositioning Appliance; A controlled clinical study**
Luis Tomas Huanca Ghislanzoni, Douglas Edward Toll, Efisio Defraia, Tiziano Baccetti, Lorenzo Franchi
- 692 **Stability comparison between commercially available mini-implants and a novel design: Part 1**
Christine Hong, Haofu Lee, Richard Webster, Jinny Kwak, Benjamin M. Wu, Won Moon
- 700 **Influence of four systems for dental bleaching on the bond strength of orthodontic brackets**
Rogelio J. Scougall-Vilchis, Blanca Silvia Gonzalez-Lopez, Rosalia Contreras-Bulnes, Laura Emma Rodriguez-Vilchis, Michelle Wendoline Garcia-Niño de Rivera, Toshio Kubodera-Ito
- 707 **Characterization of the porosity of human dental enamel and shear bond strength in vitro after variable etch times: initial findings using the BET Method**
Trang T. Nguyen, Arthur Miller, Maria F. Orellana
- 716 **Effect of adhesive application prior to bracket bonding with flowable composites**
Alberto Albaladejo, Javier Montero, Rafael Gómez de Diego, Antonio López-Valverde

Case Reports

- 721 **Orthodontic treatment after autotransplantation**
Mehrangiz Ghassemi, Abdolreza Jamilian, Ulrike Fritz, Dieter Riediger, Alireza Ghassemi
- 726 **Treatment of Class II open bite complicated by an ankylosed maxillary central incisor**
Dong-Hyun Hwang, Ki-Ho Park, Yong-Dae Kwon, Su-Jung Kim
-

Editorial

- 736 **How articles get into *The Angle Orthodontist***
Robert J. Isaacson
-

Erratum

738

Academic Opportunities

739

AVANCES en odontología

Vol. 27- Núm. 4 - JULIO-AGOSTO 2011

SUMARIO

A nuestros lectores	181
Fibroma osificante periférico: Presentación de tres casos y revisión de la literatura PÉREZ ÁLVAREZ D, GONZÁLEZ SÁNCHEZ MA, BERINI AYTÉS L, GAY ESCODA C	183
Tumor neuroectodérmico pigmentado infantil. Reporte de un caso DÍAZ CABALLERO AJ, CANTILLO PALLARES O, HERRERA HERRERA A	189
Ortodoncia y periodoncia TORTOLINI P, FERNÁNDEZ BODEREAU E	197
Quiste óseo simple: Reporte de un caso y revisión de la literatura CHRCANOVIC BR, LÓPEZ ALVARENGA R, FREIRE-MAIA B	215

ACEPTADA EN EL ÍNDICE BIBLIOGRÁFICO ESPAÑOL EN CIENCIAS DE LA SALUD (IBECS) Y EN SCIELO.

LAS DIRECCIONES DE INTERNET PARA ENCONTRAR LAS REVISTAS INDEXADAS SON LAS SIGUIENTES:

AVANCES EN ODONTOESTOMATOLOGÍA

http://scielo.isciii.es/scielo.php/script_sci_serial/pid_0213-1285/lng_es/nr

AVANCES EN PERIODONCIA E IMPLANTOLOGÍA ORAL

http://scielo.isciii.es/scielo.php/script_sci_serial/pid_1130-1457/lng_es/nr

AVANCES

EN PERIODONCIA E IMPLANTOLOGIA ORAL

VOLUMEN 23 • NÚMERO 2 • AGOSTO 2011

SUMARIO

A nuestros lectores	89
Colgajo de reposición apical PÉREZ-SALCEDO L, BASCONES MARTÍNEZ A	91
Estudio experimental sobre la utilización de células madre humanas en la terapia de los defectos periodontales: resultados preliminares CARINI F, MENCHINI FABRIS GB, BIAGI E, SALVADE' A, SBORDONE L, BALDONI MG	97
Influencia de la aspirina sobre el sangrado al sondaje ARDILA MEDINA CM	109
Proteínas expresadas durante la periodontitis crónica. Revisión de la literatura DÍAZ CABALLERO A, ARÉVALO TOVAR L, SIMANCAS PALLARES M	113
Estado periodontal y de la mucosa oral en un grupo de embarazadas: Estudio clínico LACALZADA-PASTOR M, GIL-SAMANIEGO J, GIMÉNEZ-JUNCOSA M, LÓPEZ-LÓPEZ J, CHIMENOS-KÜSTNER E	123
Restauraciones estéticas implanto soportadas: principios biológicos y clínicos ARDILA MEDINA CM	129

ACEPTADA EN EL ÍNDICE BIBLIOGRÁFICO ESPAÑOL EN CIENCIAS DE LA SALUD (IBECS) Y EN SCIELO.

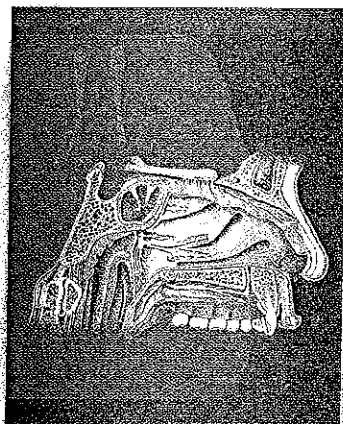
LAS DIRECCIONES DE INTERNET PARA ENCONTRAR LAS REVISTAS SON LAS SIGUIENTES:

AVANCES EN ODONTOESTOMATOLOGÍA

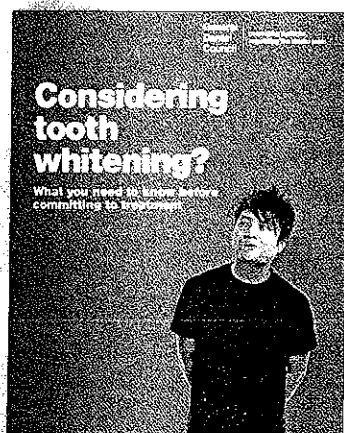
http://scielo.isciii.es/scielo.php/script_sci_serial/pid_0213-1285/Ing_es/nr

AVANCES EN PERIODONCIA E IMPLANTOLOGÍA ORAL

http://scielo.isciii.es/scielo.php/script_sci_serial/pid_1130-1457/Ing_es/nr



Olfactory nerve (cranial nerve I)



Tooth whitening debate steps up a few shades p7



Implant healing times could be cut p8

BDJ

BRITISH DENTAL JOURNAL
incorporating DENTAL BUSINESS

COVER IMAGE

OLFACTORY NERVE (CRANIAL NERVE I)

The cover images in volume 211 of the Journal depict the 12 cranial nerves, showing both their origin in the brain and the areas that they innervate. This issue's cover features the olfactory nerve, which is responsible for transmitting the sense of smell.

Illustrated in watercolour by Joanna Culley BA (Hons) MMAA RMIP, Medical and Scientific Artist
www.medical-artist.com
Tel: +44 (0)203 287 7202

EDITORIAL

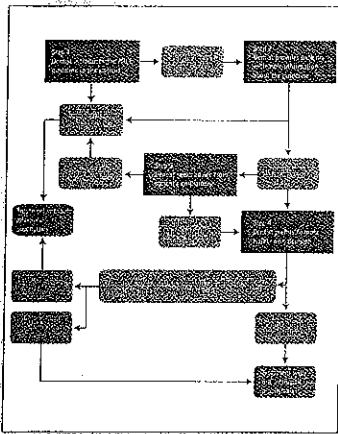
- 1 Whatever you think is best, doctor
Stephen Hancocks OBE

LETTERS

- 3 Difficult to accept
- 4 Bus driver threat
Antibacterial twig
Sheath compliance
- 6 Proto-medicine
Watershed case

NEWS

- 7 Tooth whitening debate steps up a few shades
- 8 Honours and awards
Implant healing times could be cut
BDA bulletin
No mouthwash-cancer link found
- 10 Practitioners sought for multidisciplinary commissioning



Steps dentists follow in decision making process for adoption of the new guideline. E1

OPINION

- 11 Quality indicators: the rationale behind their use in NHS dentistry
I. Mills, P. Batchelor
- 15 Corrigendum

PRACTICE

- 17 A survey of UK dental health professionals using a medicines information service: what questions do they ask and do they get useful answers?
J. E. McEntee, S. L. Henderson, P. M. Rutter, J. Rutter, H. J. Davis, C. J. Randall

ABSTRACTS

- 23 A selection of abstracts of clinically relevant papers from other journals *John R. Radford*
The roles of hope and optimism on posttraumatic growth in oral cavity cancer patients
Dental tooth surface loss and quality of life in university students
Orofacial pain and predictors in oral squamous cell carcinoma patients receiving treatment
The association between periodontal disease, physical activity and healthy diet among adults in Jordan

RESEARCH SUMMARIES

- 24 Summary of: 'Antibiotic prophylaxis in dentistry: part I. A qualitative study of professionals' views on the NICE guideline'
- 26 Summary of: 'Antibiotic prophylaxis in dentistry: part II. A qualitative study of patient perspectives and understanding of the NICE guideline'

ONLINE RESEARCH PAPERS

- E1 Antibiotic prophylaxis in dentistry: part I. A qualitative study of professionals' views on the NICE guideline
S. Soheilipour, S. Scambler, C. Dickinson, S. M. Dunne, M. Burke, J. T. Newton
DOI: 10.1038/sj.bdj.2011.524
- E2 Antibiotic prophylaxis in dentistry: part II. A qualitative study of patient perspectives and understanding of the NICE guideline
VERIFIABLE CPD PAPER
S. Soheilipour, S. Scambler, C. Dickinson, S. M. Dunne, M. Burke, J. T. Newton
DOI: 10.1038/sj.bdj.2011.525

GENERAL

- 29 Current developments in interim transport (storage) media in dentistry: an update VERIFIABLE CPD PAPER
N. Malhotra
- 33 Corrigendum

CLINICAL ORAL IMPLANTS RESEARCH

Discover this journal online at
WILEY ONLINE LIBRARY
wileyonlinelibrary.com/journal/clr

Volume 22 · Number 7 · July 2011

Contents

Review

- Titanium allergy: could it affect dental implant integration? 673 A. Siddiqi, A. G. T. Payne, R. K. De Silva & W. J. Duncan
The effect of chemotherapeutic agents on contaminated titanium surfaces: a systematic review 681 V. I. Ntrouka, D. E. Slot, A. Louropoulou & F. Van der Weijden

Original Articles

- Initial stability and bone strain evaluation of the immediately loaded dental implant: an *in vitro* model study 691 H.-L. Huang, Y.-Y. Chang, D.-J. Lin, Y.-F. Li, K.-T. Chen & J.-T. Hsu
In vivo investigation on connective tissue healing to polished surfaces with different surface wettability 699 F. R. Kloss, D. Steinmüller-Nethl, R. G. Stigler, T. Ennemoser, M. Rasse & O. Hächl
Osmotic pressure of periimplant sulcular and gingival crevicular fluids: a split-mouth, randomized study of its measurement and clinical significance 706 U. Sakalhoğlu, M. Lütfoğlu, E. E. Sakalhoğlu, S. Sert & G. Ceylan
Maxillary sinus vascular anatomy and its relation to sinus lift surgery 711 G. Rosano, S. Taschieri, J.-F. Gaudy, T. Weinstein & M. Del Fabbro
Effects of magnesium intake deficiency on bone metabolism and bone tissue around osseointegrated implants 716 M. M. Belluci, G. Giro, R. A. L. del Barrio, R. M. R. Pereira, E. Marcantonio Jr & S. R. P. Orrico
Effect of implant drill characteristics on heat generation in osteotomy sites: a pilot study 722 H. J. Oh, U. ME Wikesjö, H.-S. Kang, Y. Ku, T.-G. Bom & K.-T. Koo
Experimental model of bone response to xenografts of bovine origin (Endobon®): a radiological and histomorphometric study 727 M. P. Ramírez-Fernández, J. L. Calvo-Guirado, R. A. Delgado-Ruiz, J. E. Maté-Sánchez del Val, G. Gómez-Moreno & J. Guardia
Improved pre-osteoblast response and mechanical compatibility of ultrafine-grained Ti-13Nb-13Zr alloy 735 C. H. Park, C. S. Lee, Y.-J. Kim, J.-H. Jang, J.-Y. Suh & J.-W. Park
Soft tissue development around abutments with a circular macro-groove in healed sites of partially edentulous posterior maxillae and mandibles: a clinical pilot study 743 M. Weinländer, V. Lekovic, S. Spadijer-Gostovic, B. Milicic, W. A. Wegscheider & E. Piehslinger
Study of the osseointegration of dental implants placed with an adapted surgical technique 753 M. M. Al-Marhood, R. Junker, A. Al-Rasheed, A. Al Farraj Aldosari, J. A. Jansen & S. Anil
Effects of a calcium phosphate coating on the osseointegration of endosseous implants in a rabbit model 760 F. Fontana, I. Rocchietta, A. Addis, P. Schupbach, G. Zanotti & M. Simion
Bone response to hydroxyapatites with open porosity of animal origin (porcine [OsteoBioI®mp3] and bovine [Endobon®]): a radiological and histomorphometric study 767 M. P. Ramírez-Fernández, J. L. Calvo-Guirado, R. A. Delgado-Ruiz, J. E. Maté-Sánchez del Val, V. Vicente-Ortega & L. Meseguer-Olmos

Short Communication

- Osteoconduction of a stoichiometric and bovine hydroxyapatite bilayer-coated implant 774 T. Hayami, S. Hontsu, Y. Higuchi, H. Nishikawa & M. Kusunoki

Corrigendum

777

This journal is available online at Wiley Online Library.
Visit wileyonlinelibrary.com/journal/clr to search the articles and register for table of contents e-mail alerts.

Clinical Oral Implants Research is covered by Current Contents®/Clinical Medicine, the Science Citation Index®, and SciSearch®.

Printed in Malaysia
ISSN:0905-7161

CLINICAL ORAL IMPLANTS RESEARCH

Discover this journal online at
WILEY ONLINE LIBRARY
wileyonlinelibrary.com

Volume 22 · Number 8 · August 2011

Contents

Review

- Effect of socket preservation therapies following tooth extraction in non-molar regions in humans: a systematic review 779 J. M. A. G. Ten Heggeler, D. E. Slot & G. A. Van der Weijden

Original Articles

- Ambiguity in bone tissue characteristics as presented in studies on dental implant planning and placement: a systematic review 789 R. F. Ribeiro-Rotta, C. Lindh, A. C. Pereira & M. Rohlin
- Guided bone regeneration with a synthetic biodegradable membrane: a comparative study in dogs 802 R. E. Jung, V. Kokovic, M. Jurisic, D. Yaman, K. Subramani & F. E. Weber
- The effects of cyclic loading and preparation on the fracture strength of zirconium-dioxide implants: an *in vitro* investigation 808 R. J. Kohal, M. Wolkewitz & A. Tsakona
- Early peri-implant tissue reactions on different titanium surface topographies 815 S. Yamano, Z. H. Al-Sowygh, G. O. Galhucci, K. Wada, H.-P. Weber & C. Sukotjo
- Analysis of the pattern of the alveolar ridge remodelling following single tooth extraction 820 U. Covani, M. Ricci, G. Bozzolo, F. Mangano, A. Zini & A. Barone
- Prevalence of periimplant disease in partially edentulous patients: a practice-based cross-sectional study 826 S. Rinke, S. Ohl, D. Ziebolz, K. Lange & P. Eickholz
- Variation in the total lengths of abutment/implant assemblies generated with a function of applied tightening torque in external and internal implant-abutment connection 834 K.-S. Kim, Y.-J. Lim, M.-J. Kim, H.-B. Kwon, J.-H. Yang, J.-B. Lee & S.-H. Yim
- Stability, marginal bone loss and survival of standard and modified sand-blasted, acid-etched implants in bilateral edentulous spaces: a prospective 15-month evaluation 840 Z. C. Karabuda, J. Abdel-Haq & V. Arisan
- Computer-aided design and manufacturing construction of a surgical template for craniofacial implant positioning to support a definitive nasal prosthesis 850 L. Ciocca, M. Fantini, F. De Crescenzo, F. Persiani & R. Scotti
- Effect of anorganic bovine bone to autogenous cortical bone ratio upon bone remodeling patterns following maxillary sinus augmentation 857 P. Galindo-Moreno, I. Moreno-Riestra, G. Avila, M. Padial-Molina, J. A. Paya, H.-L. Wang & F. O'Valle
- Osteoblast response to titanium surfaces functionalized with extracellular matrix peptide biomimetics 865 B. F. Bell, M. Schuler, S. Tosatti, M. Textor, Z. Schwartz & B. D. Boyan
- Analysis of intensity variability in multislice and cone beam computed tomography 873 O. Nackaerts, F. Maes, H. Yan, P. C. Souza, R. Pauwels & R. Jacobs

This journal is available online at Wiley Online Library.
Visit wileyonlinelibrary.com/journal/clr to search the
articles and register for table of contents e-mail alerts.

Clinical Oral Implants Research is covered by Current Contents®/Clinical Medicine,
the Science Citation Index®, and SciSearch®.

Printed in Malaysia
ISSN:0905-7161

DA DENTAL ABSTRACTS

<u>Commentary</u>	60	<u>Inquiry</u>	83
Dental Benefits—A New Value Proposition <i>By Joseph V. Errante, D.D.S.</i>	60	Amalgam	83
Compassion for elderly patients	62	Amalgam-related complaints and cognition	
Extracts	62	Clinical Trials	83
Working long hours + unfit = higher cardiac death risk		Randomized controlled clinical trials	
<u>The Front Office</u>	63	Dental Erosion	86
Ethics	63	Erosion in Icelandic youth	
Referrals		Dentist Health	88
Informed Consent	64	Early retirement problems	
What patients want		Dental Implants	89
<u>The Big Picture</u>	65	Implants and periodontal status	
Positive aspects of the recession		Dental Trauma	90
<u>Hands On</u>	66	Mouthguard use in world-class athletes	
Crown and Bridge	66	Endodontics	92
Technique for remount cast		Cost of periapical abscess	
Dental Imaging	67	Fixed Prosthodontics	93
Cone beam computed tomography essentials		Prefabricated and cast post survival rates	
Endodontics	70	Implants	94
Orthograde retreatment		Immediate loading and primary stability	
Oral Medicine	71	Intergenerational Oral Health	95
Anaphylaxis		Parental influences on children's oral health	
Oral Surgery	73	Nutrition	97
Neurosensory deficit after lower third molar surgery		Phytochemicals	
Pain Control	75	Obesity	99
Augmenting inferior alveolar nerve block		Edentulism and obesity in older adults	
Pediatric Dentistry	76	Oral Disease Patterns	100
Ice to prevent self-mutilation after anesthesia		Periodontitis and caries	
Restorative Dentistry	76	Oral Medicine	101
Vacuum-formed templates		Oral function after cancer surgery	
Temporomandibular Disorders	79	Oral Systematic Connections	102
Trismus device		Chewing gum and spatial tasks	
Tooth Whitening	80	Oral/Systemic Linkages	103
Bleaching basics		Number of teeth and cardiovascular mortality	
		Pain	104
		Tongue pain	
		Pediatric Dentistry	104
		Mothers' and children's untreated caries	
		Periodontal Disease	105
		Width of attached gingiva	

Preventive Dentistry	107
Resin infiltration	
Teeth Whitening	108
At-home and in-office bleaching	
Temporomandibular Disorders	109
Risk factors for temporomandibular disorder	
Tooth Loss	110
Factors in postmenopausal women's tooth loss	
Extracts	112
Lasers stronger than you think	

Journals Represented

Access
Acta Odontologica Scandinavica
Alpha Omegan
American Journal of Orthodontics and Dentofacial Orthopedics
British Dental Journal
Community Dentistry and Oral Epidemiology
Dental Traumatology
European Journal of Dental Education
Evidence-based Dentistry
Gerodontology
International Journal of Oral and Maxillofacial Surgery
Journal of the American Dental Association
Journal of Dental Research
Journal of Evidence-based Dental Practice
Journal of Oral and Maxillofacial Implants
Journal of Oral and Maxillofacial Surgery
Journal of Oral Pathology and Medicine
Journal of Oral Rehabilitation
Journal of Periodontal Research
Journal of Prosthodontics
Orthodontics and Craniofacial Research

We Need Your Photos!

If you have a photograph that you would like to see on the cover of *Dental Abstracts*, please send us a print or slide for consideration. Appropriate photographs should have a vertical orientation. Please submit your photographs to *Dental Abstracts*, Attn: Jane Ryley, Periodicals, Elsevier, 3251 Riverport Lane, Maryland Heights, MO 63043. Tel: 314-447-9226. When submitting your photographs, please be sure to include your telephone number and e-mail contact information.

Notes

To facilitate the use of *Dental Abstracts* as a reference tool, all illustrations and tables included in this publication are now identified as they appear in the original article. This change is meant to help the reader recognize that any illustration or table appearing in *Dental Abstracts* may be only one of many in the original article. For this reason, figure and table numbers will often appear to be out of sequence within *Dental Abstracts*.

Standard Abbreviations

The following terms are abbreviated: acquired immunodeficiency syndrome (AIDS), human immunodeficiency virus (HIV), and temporomandibular joint (TMJ).

DA DENTAL ABSTRACTS

<u>Commentary</u>	116	Endodontics	139
Non-Profit Delta Dental of Colorado Gives Back to the Community By Barbara Springer, J.D.	116	Root perforation	
Organizational ethics	117	Indirect pulp treatment	
Extracts	118	Esthetic Dentistry	142
Skiping cancer screening		Ethics, esthetics, and enhancement	
<u>The Front Office</u>	119	Composite resin for anterior diastemas or malformations	
Ethics	119	Implants	146
Conflicts of interest	119	Magnet-retained overdentures	
Handling unhappy employees	120	Medical Management	148
Unsubstantiated diagnostic testing	121	Oral and gastrointestinal health	
Extracts	121	Obesity	149
Fish oil lowers breast cancer risk		Dental health, obesity, and inflammation in children	
<u>The Big Picture</u>	122	Oral Medicine	150
History of Dentistry	122	Mucoceles	
Dentist for President Washington	123	Oral Surgery	152
Periodontal Treatment	123	Surgeon experience and third molar surgical complications	
Growth factors for periodontal regeneration	125	Radiotherapy and osteoradionecrosis patients	
Extracts	125	Orthodontics	155
Health care workers all need flu vaccines		Avoiding litigation	
<u>Hands On</u>	126	<u>Inquiry</u>	158
Complete Dentures	126	Obesity	158
Medicolegal problems	128	Dentists and weight loss interventions	
Crown and Bridge	128	Oral Medicine	160
Avoiding litigation	131	Pica	
Dental Materials	131	Oral-Systemic Connections	162
Amalgam versus composite resin	133	Number of teeth and cardiovascular risk	
Dental Trauma	133	Oral-Systemic Health	162
Evidence-based emergency dental practice	136	Periodontal therapy and diabetes mellitus	
Digital Impressions	136	Pain	163
Making a porcelain-fused-to-metal bridge from a digital impression	137	Dental versus cardiac pain in the craniofacial region	
Diversity	137	Periodontal Disease	164
Becoming culturally competent		Controlling the inflammatory cascade	
		Preventive Dentistry	165
		Preventing root caries in elderly persons	

Prosthodontics	166
Evidence-based practice	
Extracts	168
Smoking or smokeless—the addiction remains	

Journals Represented

Access
Acta Odontologica Scandinavica
Alpha Omegan
American Journal of Orthodontics and Dentofacial Orthopedics
British Dental Journal
Community Dentistry and Oral Epidemiology
Dental Traumatology
European Journal of Dental Education
Evidence-based Dentistry
Gerodontology
International Journal of Oral and Maxillofacial Surgery
Journal of the American Dental Association
Journal of Dental Research
Journal of Evidence-based Dental Practice
Journal of Oral and Maxillofacial Implants
Journal of Oral and Maxillofacial Surgery
Journal of Oral Pathology and Medicine
Journal of Oral Rehabilitation
Journal of Periodontal Research
Journal of Prosthodontics
Orthodontics and Craniofacial Research

We Need Your Photos!

If you have a photograph that you would like to see on the cover of *Dental Abstracts*, please send us a print or slide for consideration. Appropriate photographs should have a vertical orientation. Please submit your photographs to *Dental Abstracts*, Attn: Jane Ryley, Periodicals, Elsevier, 3251 Riverport Lane, Maryland Heights, MO 63043. Tel: 314-447-9226. When submitting your photographs, please be sure to include your telephone number and e-mail contact information.

Notes

To facilitate the use of *Dental Abstracts* as a reference tool, all illustrations and tables included in this publication are now identified as they appear in the original article. This change is meant to help the reader recognize that any illustration or table appearing in *Dental Abstracts* may be only one of many in the original article. For this reason, figure and table numbers will often appear to be out of sequence within *Dental Abstracts*.

Standard Abbreviations

The following terms are abbreviated: acquired immunodeficiency syndrome (AIDS), human immunodeficiency virus (HIV), and temporomandibular joint (TMJ).

Encuentros

Aunque partimos de un mismo origen, desde el principio, cada gota, cada individuo, realmente inicia el camino desde un punto distinto. Un milímetro, una circunstancia lo cambia todo. Sin tregua cada instante nos conduce por una senda en la que cada metro recorrido y cada segundo vivido será diferente. Para uno mismo y para todos los que encontraremos.

Cruzaremos remansos, nos empujarán fuerzas y corrientes, y en distintos puntos volveremos a coincidir, pero en ningún caso la experiencia será la misma, ni por comenzar en el mismo punto, ni por terminar en el mismo lugar.

Cada gota, cada individuo, habrá vivido experiencias distintas, y cada uno lo explicará desde su punto de vista.

Hay cientos de orígenes y destinos, y en cada uno de los recorridos hasta diluirnos en la inmensidad del recuerdo, habremos aprendido algo nuevo y diferente.

Al final lo que perdura son los recuerdos compartidos en cada encuentro. **E**

Sumario

Nº 3 | 2011 | Vol. 17 | Mayo, Junio

8

Gestión

Conceptos generales sobre calidad sanitaria.

14

Gestión

12 Consejos para un mostrador de recepción organizado.

18

Gestión

La presentación del presupuesto.

24

TIC

Comunicaciones comerciales por medios electrónicos.

26

TIC

Una página de Facebook para mi consulta (II).

30

Clinica del mes

Orthoclinic Tarragona.

36

Paisajismo

¿Cómo crear un espacio más amable? Dracena Marginata

38

Marketing

Esencia de la motivación

40

Gestión

Colegios Profesionales

43

Photo

Defensa inmunológica.

44

Vinos

La ubicación geográfica de las DO.

46

Traducción Científica

Eduardo Anitua.

48

Notas de Prensa

DentalEconomics Magazine

Prohibida la reproducción y/o difusión total o parcial, en cualquier soporte físico o digital sin consentimiento escrito y específico para cada acción, por parte de Graphics & Things SL.

Publicación

Bimensual
Distribución nacional

Editorial

Graphics & Things SL
Baileán, 120 PB
08009 - Barcelona

Director

Fermín González Davies

Atención al cliente

93 238 51 48
info@dentaleconomics.es

Copyright

Graphics & Things SL

Diseño y maquetación

Battagliotti Bros.

Publicidad

publicidad@dentaleconomics.es
> Barcelona: Beatriz Ordoñez
bordones@accionmedica.com
93 285 75 55
> Madrid: Lucia Rubio
lrubio@accionmedica.com
91 536 08 14

Suscripciones

alta@dentaleconomics.es

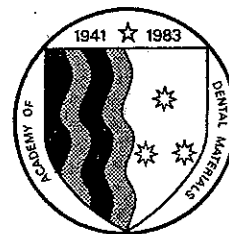
Impresión

En España:
Unigraphic (Igalada)
Depósito legal: B-23422-95
ISSN: 1135-4534
1er editor: Ediciones Doyma S.A.
Graphics & Things SL edita
la revista desde enero 2011

Precios de suscripción

Tarifas en España:
Suscripción anual 65 euros
Ejemplar suelto 25 euros
Ejemplar atrasado 30 euros
Iva incluido
Tarifas en Latinoamérica:
Suscripción anual 80 euros

www.dentaleconomics.es



Contents

Editorial review

- 619 International dental standards—Order out of chaos?
A. Della Bona, W.T. Wozniak, D.C. Watts

Original articles

- 622 Two year clinical evaluation of a low-shrink resin composite material in UK general dental practices
F.J.T. Burke, R.J. Crisp, A. James, L. Mackenzie, A. Pal, P. Sands, O. Thompson, W.M. Palin
- 631 Influence of silver nano-particles on monomer elution from light-cured composites
J. Durner, M. Stojanovic, E. Urcan, R. Hickel, F.-X. Reichl
- 637 Effects of surface finishing conditions on the biocompatibility of a nickel–chromium dental casting alloy
E. Louise McGinley, D.C. Coleman, G.P. Moran, G.J.P. Fleming
- 651 The effect of preparation order on the crystal structure of yttria-stabilized tetragonal zirconia polycrystal and the shear bond strength of dental resin cements
J.-e. Moon, S.-h. Kim, J.-b. Lee, S.-r. Ha, Y.-s. Choi
- 664 Tailoring of physical properties in highly filled experimental nanohybrid resin composites
B. Pick, M. Pelka, R. Belli, R.R. Braga, U. Lohbauer
- 670 Reduced contraction stress formation obtained by a two-step cementation procedure for fiber posts
L.A. Jongsma, N. de J. Ir., C.J. Kleverlaan, A.J. Feilzer
- 677 Comparative study on corrosion resistance and in vitro biocompatibility of bulk nanocrystalline and microcrystalline biomedical 304 stainless steel
F.L. Nie, S.G. Wang, Y.B. Wang, S.C. Wei, Y.F. Zheng
- 684 Subcritical crack growth behavior and life data analysis of two types of dental Y-TZP ceramics
G. Mitov, J. Gessner, U. Lohbauer, K. Woll, F. Muecklich, P. Pospiech
- 692 Nanofilled and microhybrid composite restorations: Five-year clinical wear performances
S. Palaniappan, D. Bharadwaj, D.L. Mattar, M. Peumans, B. Van Meerbeek, P. Lambrechts
- 701 Is there one optimal repair technique for all composites?
B.A.C. Loomans, M. Vivian Cardoso, F.J.M. Roeters, N.J.M. Opdam, J. De Munck, M.C.D.N.J.M. Huysmans, B. Van Meerbeek
- 710 Effect of the microstructure on the lifetime of dental ceramics
M. Borba, M.D. de Araújo, K.A. Fukushima, H.N. Yoshimura, P.F. Cesar, J.A. Griggs, Á.D. Bona

Online only articles

- e125 Fracture simulation of restored teeth using a continuum damage mechanics failure model
H. Li, J. Li, Z. Zou, A.S.-L. Fok
- e134 Development of the foremost light-curable calcium-silicate MTA cement as root-end in oral surgery. Chemical-physical properties, bioactivity and biological behavior
M.G. Gandolfi, P. Taddei, F. Siboni, E. Modena, G. Ciapetti, C. Prati
- e158 Pulp response after application of two resin modified glass ionomer cements (RMGICs) in deep cavities of prepared human teeth
C.A. de S. Costa, A.P.D. Ribeiro, E.M.A. Giro, R.C. Randall, J. Hebling

Indexing Services

Dental Materials is indexed by *Index Medicus*, *BIOSIS*, *Current Contents*, *SciSearch*, *Research Alert*, *UnCover*, *Reference Update*, *UMI*, *Silver Platter*, *Excerpta Medica*, *CAB International* and *CINAHL*. The journal is available in microfilm from *UMI*.



This journal is part of Science Direct's free alerting service which sends tables of contents and favourite topics for Elsevier books and journals. You can register by clicking "Alerts" at www.sciencedirect.com



Amsterdam • Boston • London • New York • Oxford • Paris • Philadelphia • San Diego • St. Louis

14 EN PORTADA



**¿Es usted
la pieza
que falta?**

Carta del director

4 ¿Estamos preparados?

ACTUALIDAD

6 La Fundación A.M.A. busca su consolidación en 2011 • Premio Mejor Sonrisa 2010 para Vicente del Bosque

8 Clausurada la sexta edición del Diploma en Dirección Odontológica y Gestión Clínica de dentalDoctors • Unos 3.000 higienistas se formarán en manejo psicológico del paciente

9 Vitaldent celebra sus 20 años de historia en Expofranquicia

LA VISIÓN DEL EXPERTO

Normativa

10 Respuestas a sus preguntas sobre...

Informática

12 Las "tabletas" en salud

EN PORTADA

¿Es usted la pieza que falta?

14 La comunicación y una labor de equipo que incluya al técnico de laboratorio son la clave para una planificación terapéutica eficaz

OPERATORIA DENTAL

¿Nos libramos de los padres?

24 La anestesia pediátrica ya es bastante complicada sin mamás ansiosas que empeoran la situación

¿Preparado para la nueva época en Odontología?

27 La evolución de la imagen del dentista hacia una Odontología más holística

24



27



La mejor cosmética dental: un nuevo cambio de paradigma

31 Procedimientos cosméticos mínimos para crear una sonrisa brillante que transmita seguridad

Blanqueamiento no vital

35 Revisión bibliográfica de las técnicas de blanqueamiento más usadas y efectivas

SU CONSULTA

Conectar la consulta ecológica

43 Reducir el impacto medioambiental y los gastos al mismo tiempo

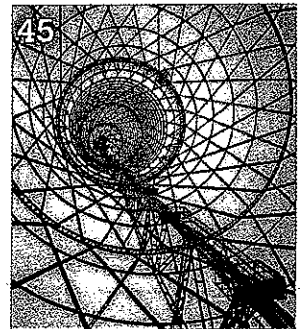
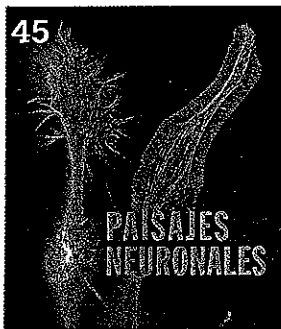
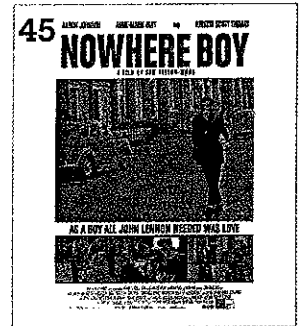
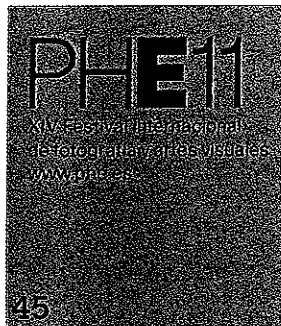
ENTORNO

45 Cultura

46 Golf

NOVEDADES

47 Provisional y ConHex, nuevos pilares de Phibo
• Material fluido de polimerización dual Core-Flo DC • Esterilizador Lina Clase B, de W&H



EN NUESTRA WEB

dental
practice

Participe en las encuestas de *Dental Practice* a través de nuestra página web.

Su opinión sobre los temas más candentes de la profesión resulta muy importante para nosotros, ya que contribuirá a conocer mejor la realidad de la odontoestomatología en nuestro país.

¿Cuál es la implicación de su técnico de laboratorio en sus tratamientos?

DENTAL PRACTICE no hace necesariamente suyas las opiniones vertidas en los artículos firmados.

DENTAL PRACTICE Edición española es una publicación de Spanish Publishers Associates (SPA), Antonio López, 249 (1ª), 28041 Madrid, editada en colaboración con Advanstar Communications Inc.

© Copyright 2011 by Advanstar Communications Inc. All rights reserved. No part of this publication may be reproduced or transmitted in any form or by means, electronic or mechanical including by photocopy, recording or information storage and retrieval without permission in writing from the publisher, Advanstar Communication Inc.

© Copyright 2011 Edición española, Spanish Publishers Associates.

European Journal of Orthodontics

Volume 33 Issue 3 June 2011

Articles

T.Oikawa, Y. Nomura, C. Arai **Mechanism of active eruption of molars in adolescent rats** P. 221-227

N. Ghaleb, J. Bouserhal, and N.Bassil-Nassif **Aesthetic evaluation of profile incisor inclination** P. 228-235

G.O. Ramirez-Yañez, A.Stewart, E.Franken **Prevalence of mandibular asymmetries in growing patients** P. 236-242

J. Takada, T.Ono, J.J. Miyamoto **Association between intraoral pressure and molar position and inclination in subjects with facial asymmetry** P. 243-249

K.V.Parys, I.H.A. Aartman, R.Kultert **Assessment of dental anomalies on panoramic radiographs: inter- and intraexaminer agreement** P. 250-255

A.P.Muchitsch, B.Wendl, H.Winsauer **Rapid maxillary expansion screws on the test bench—a pilot study** P. 256-262

E. Joury, A. Johal, and W.Marcenes **The role of socio-economic position in predicting orthodontic treatment outcome at the end of 1 year of active treatment** P. 263-269

F.Sardenberg, A.C.Oliveira, S.M. Paiva **Validity and reliability of the Brazilian version of the psychosocial impact of dental aesthetics questionnaire** P. 270-275

C.Hung Chu, K.Liang Ou, De Rei Dong **Orthodontic bonding with self-etching primer and self-adhesive systems** P. 276-281

A.Tabrizi and B.Cakirer **A comparative evaluation of casein phosphopeptide-amorphous calcium phosphate and fluoride on the shear bond strength of orthodontic brackets** P. 282-287

B. Wendl, P. Muchitsch, M. Pichelmayer. **Comparative bond strength of new and reconditioned brackets and assessment of residual adhesive by light and electron microscopy** P. 288-292

T.Muguruma, M.Iijima, W.A. Brantley. **Relationship between the metallurgical structure of experimental titanium miniscrew implants and their torsional properties** P. 293-297

S.Patel, T.Fanshawe, D.Bister. **Survival and success of maxillary canine autotransplantation: a retrospective investigation** P. 298-304

S. Anić-Milošević, S. Meštrović, M.Lapter-Varga. **Analysis of the soft tissue profile in Croatians with normal occlusions and well-balanced faces** P. 305-310

M.V.Vettore and A.E. Sousa Campos **Malocclusion characteristics of patients with cleft lip and/or palate** P. 311-317

A.Ahrens, C.McGrath, and U.Hägg **A systematic review of the efficacy of oral appliance design in the management of obstructive sleep apnoea** P. 318-324

A.Pavlič, T.Battelino, K.T.Podkrajšek. **Craniofacial characteristics and genotypes of amelogenesis imperfecta patients** P. 325-331

EDITORIAL El Dr. Juan Carlos Vara de la Fuente presenta el monográfico «Especial Implantes» 3

ACTUALIDAD 12

SEPA impulsa la progresión profesional con un encuentro científico de referencia..... 12

Cerca de 400 personas asistieron a la I Reunión de Higiene Bucodental 16

Primer curso de Paleoantropología para dentistas 17

El COENA se suma al proyecto social «Síndrome up»..... 20

Campaña anual de Diagnóstico Precoz de Cáncer Oral 20

Tablas salariales de 2011 para los laboratorios de prótesis dentales de Madrid 20

SEPEs en el congreso anual de la Academia Europea de Estética... 20

La SEI, en el Congreso Internacional de ICOI y en el Salón Dental de Chile 2011 22

El Dr. Alberto Cacho, nuevo director del Departamento de Estomatología IV de la UCM..... 22

Los dentistas cordobeses se forman en técnicas de reconstrucción estética en clínicas de Odontología general..... 22

Presentación del libro: «Anestésicos y técnicas loco-regionales en Odontología» 24

Los avances en el campo de la cirugía apical permiten en casi todos los casos la conservación del diente infectado.... 26

Fracturas de mandíbula y extracción de muelas del juicio.... 28

Convocados los Premios Anuales de HIDES 28

Hasta el 15 de julio participa en los Premios Gaceta Dental 2011.. 28

Se presenta en Aragón la campaña «Tus amigos los dientes».... 30

Encuentro multidisciplinar en Sevilla para abordar el maltrato infantil 32

HIDES estrena web 34

I Simposio Nacional sobre Avances en Cuidados Especiales en Odontología 34

Los dientes de los rumiantes indican el clima y la vegetación en el Mioceno..... 34

XXXIII Reunión anual de la SEOP..... 36

Obituario del Dr. José Municio Torres, por el Dr. Ruperto González Giralda 38

SEMOS lanza su nueva web 39

El origen de las enfermedades periodontales a estudio en el Colegio de Dentistas de Tenerife 39

ENTREVISTA 42

Dr. Ramón Soto-Yarritu, nuevo Presidente del Colegio de Odontólogos y Estomatólogos de la I Región..... 42

Dra. Araceli Morales, presidenta de la SEI (Sociedad Española de Implantes)..... 46

ESPECIAL IMPLANTES 50

Plan de tratamiento implantológico-restaurador en los casos de interés interdisciplinar, Dr. Matteo Albertini y colabs. 50

Situación actual de los implantes inmediatos postextracción; revisión y análisis de la literatura, Dr. Manuel M^o Romero Ruiz y colabs. 90

Sustitución de un incisivo central y lateral superior mediante la colocación de un único implante, Dr. Pedro Lázaro y colabs. 110

La expansión quirúrgica de la cresta alveolar mediante corticostomía, Dr. Borja Dehesa y colabs..... 130

Revisión del estado de las crestas óseas tratadas con implantes insertados con esta técnica, Dr. Norberto Manzanares y colabs... 150

Importancia de la valoración digitalizada de los contactos oclusales, Dra. Marta Muñoz Carcavilla y colabs. 172

FICHAS 190

Nuevo implante «Replace Conical Connection»: un implante para todos, por el Dr. Luis Cuadrado y colabs..... 190

MERCADO DENTAL 202

¿Los implantes sostienen las clínicas dentales?, por Roberto Rosso 202

OPINIÓN 204

El valor de nuestros productos, por Maribel Aragoneses, presidenta de la Asociación de Empresarios Protésicos de Madrid, y colabs. 204

GESTIÓN 220

Clínica dental excelente (II), por Marcial Hernández..... 220

FOTOGRAFÍA DIGITAL 222

Por D. Marcel Martín 222

EMPRESAS 224

PRODUCTOS 240

AGENDA 248

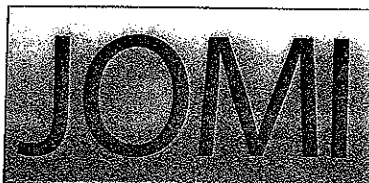
ANUNCIOS BREVES 283

CALENDARIO DE CONGRESOS 289

DIRECTORIO 290

“DOLOR OROFACIAL PARA EL DENTISTA GENERAL”

Organiza **SEDCYDO IMPRESCINDIBLE... Pág. 39**



The International Journal of
ORAL & MAXILLOFACIAL IMPLANTS
Table of Contents

Volume 26 • NUMBER 3 • 2011
ISSN 0882-2786 (print) • ISSN 1942-4434 (online)

**IMPLANT
SCIENCE**

- 475 Osteoblast-like Cell Attachment and Proliferation on Turned, Blasted, and Anodized Titanium Surfaces**
Ahran Pae/Si-Seok Kim/Hyeong-Seob Kim/Yi-Hyung Woo
- 482 Platform Switching: Biomechanical Evaluation Using Three-Dimensional Finite Element Analysis**
Lucas Fernando Tabata/Eduardo Passos Rocha/Valentim Adelino Ricardo Barão/Wirley Gonçalves Assunção
- 492 The Effects of Laser Microtexturing of the Dental Implant Collar on Crestal Bone Levels and Peri-implant Health**
Spyros Botos/Hoda Yousef/Barry Zweig/Robert Flinton/Saul Weiner
- 499 Influence of Tissue Biotype on Implant Esthetics**
Jia-Hui Fu/Angie Lee/Hom-Lay Wang
- 509 Attachment and Proliferation of Human Osteoblast-like Cells on Guided Bone Regeneration (GBR) Membranes in the Absence or Presence of Nicotine: An In Vitro Study**
Konstantinos A. Papaioannou/Cleopatra E. Markopoulou/Vassiliki Gioni/Anastasios A. Mamalis/Helen N. Vavouraki/Dimitris Kletsas/Ioannis A. Vrotsos
- 520 Accuracy of Implant Placement Using a CAD/CAM Surgical Guide: An In Vitro Study**
Saeid Nokar/Elnaz Moslehifard/Tootiaii Bahman/Masoud Bayanzadeh/Farzad Nasirpouri/Arash Nokar
- 527 Effects of Occlusal Inclination and Loading on Mandibular Bone Remodeling: A Finite Element Study**
Chaiky Rungsiyakull/Pimduen Rungsiyakull/Qing Li/Wei Li/Michael Swain
- 538 Dimensional Accuracy of Pickup Implant Impression: An In Vitro Comparison of Novel Modular Versus Standard Custom Trays**
Piero Simeone/Pier Paolo Valentini/Roberto Pizzoferrato/Folco Scudieri
- 547 Argon Ion Beam Polishing: A Preparation Technique for Evaluating the Interface of Osseointegrated Implants with High Resolution**
Daniel Grüner/Jenny Fäldt/Kjell Jansson/Zhijian Shen
- 553 Emerging Antibacterial Biomaterial Strategies for the Prevention of Peri-implant Inflammatory Diseases**
Joel D. Bumgardner/Pradeep Adatrow/Warren O. Haggard/P. Andrew Norowski
- 561 Microcomputed Tomographic and Histologic Analysis of Anorganic Bone Matrix Coupled with Cell-Binding Peptide Suspended in Sodium Hyaluronate Carrier After Sinus Augmentation: A Clinical Study**
Hany Emam/Galal Beheiri/Mohammed Elsalanty/Mohamed Sharawy
- 571 Change in Subjective Oral Health After Single Dental Implant Treatment**
Jenni Ponsi/Satu Lahti/Hannele Rissanen/Kyösti Oikarinen
- 578 Single Implants in the Esthetic Zone: Analysis of Recent Peri-implant Soft Tissue Alterations and Patient Satisfaction. A Photographic Study**
Zhibin Luo/Rongsheng Zeng/Zhibin Luo/Zhuofan Chen

**CLINICAL
APPLICATIONS**