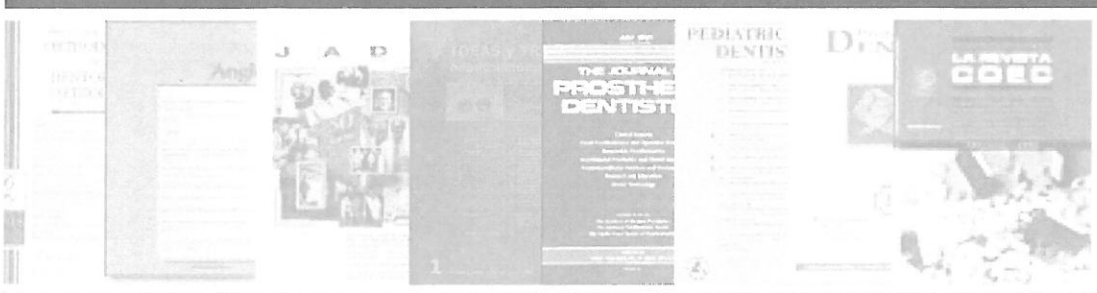


BUTLLETI DE SUMARIS

Març 2012



COL·LEGI OFICIAL D'ODONTÒLEGS I ESTOMATÒLEGS DE CATALUNYA
BIBLIOTECA.

TRAVESSERA DE GRÀCIA, 93-95 08006 BARCELONA TL. 93 3101555 FAX 93 3106399
e-mail: mnadal@coec.net

PRESENTACIÓN

El propósito principal de un Boletín de Sumarios es la máxima difusión de la información actualizada que proporcionana las publicaciones periódicas. El Boletín de Sumarios del COEC reúne, mensualmente, los sumarios de las revistas de Odontoestomatología y de materias afines que se reciben en la Biblioteca.

En cada número se da la relación de los títulos de estas revistas a continuación de la presentación. Los sumarios estan ordenados, en el Boletín, alfabéticamente por el título, siendo también accesibles por la materia general de la revista mediante el Índice de Materias del Boletín.

Esta compilación bibliográfica permite aproximar el perfil de interés del lector al contenido de las principales publicaciones periódicas de Odontoestomatología, sin necesidad de estar suscrito a ellas. Todas las revistas relacionadas se encuentran en la Biblioteca, de manera que el usuario puede pedir, si le interesa, copia de cualquier artículo citado.

REVISTAS INCLUIDAS EN NUESTRO BOLETIN

- American Jnl. of Orthodontics & Dentofacial Orthopedics
- Angle Orthodontist
- British Dental Journal
- Clinical Oral Implant Research
- Dental Materials
- El Dentista del S.XXI
- Gaceta dental
- International Journal of Oral and Maxillofacial Implants
- Journal of Prosthetic Dentistry
- Oral Surgery, Oral Medicine, Oral Pathology
- Profesión dental

MATERIA	TITOL DE LA REVISTA	pag
CIRURGIA ORAL	Oral S., Oral M., Oral Pathology Vol. 113 Núm. 3 (Març 2012)	18
COL.LEGIS PROFESSIONALS	Profesión Dental Vol.15 Núm.3 (2012) Rev. Vasca de odonto-estomatol. Vol.22 Núm.1 (gener-març 2012)	20
IMPLANTS DENTALS	Clinical Oral Implants Research. Vol.23 Núm.3 (Març 2012) JOMI Vol.27 Núm.1 (2012)	10 15
MATERIALS DENTALS	Dental Materials. Vol.28 Núm.3 (Març 2012)	11
ODONTOSTOMATOLOGIA	British Dent. Jnl. Vol.212 Núm.4,5 (febrer, marc 2012) El Dentista del S.XXI Núm.27 (Març 2012) Gaceta Dental. Núm.234 (Març 2012)	5 12 13
ORTODÒNCIA	American Jnl. Of Orthod. Vol.141 Núm.3 (Març 2012) Angle Orthodontist. Vol.82 Núm.2 (Març 2012)	1 3
PRÒTESI DENTAL	Journal of Prosthetic Dentistry. Vol.107 Núm.3 (Març 2012)	17

If it looks too good to be true [horizontal ellipsis]. pg. 255 Editorial

Ethics: Publish or perish. pg. 256 Turpin, David L. Miscellaneous

Ethics: Put education ahead of new limitations. pg. 256-257 Sheets, M.
Miscellaneous

Ethics: Schools should prepare residents for real-world experience. pg. 257 Schader,
R.E. Miscellaneous

Editorial: Other specialists can provide valuable insight. pg. 258 Sivakumar, A.
Miscellaneous

Discretion in advertising: It's up to you. pg. 259 Greco, P. M. Miscellaneous

Buccolingual inclination measurements of canines and first molars through cone-
beam computed tomography. pg. 260 O'Neil, P. Review

Molar distalization with buccal mini-implants and palatal plate. pg. 260 Talbert, L.
Review

Root resorption and ectopically erupting maxillary canines. pg. 260 Marshall, A.
Review

Perception of facial asymmetry. pg. 260 Mouritsen, David A. Review

Comparison of the orthodontic load systems created with elastomeric power chain to
close extraction spaces on different rectangular archwires. pg. 262-268 Kroczek, C.

Improvement of nasal airway ventilation after rapid maxillary expansion evaluated
with computational fluid dynamics. pg. 269-278 Iwasaki, T.

Effects of thread depth, taper shape, and taper length on the mechanical properties
of mini-implants. pg. 279-288 Chang, J.Z.C.

Efficacy of low-intensity laser therapy in reducing treatment time and orthodontic pain: A clinical investigation. pg. 289-297 Doshi-Mehta, G.

Perceived vs measured forces of interarch elastics. pg. 298-306 Oesterle, I.

Radiographic study of delayed tooth development in patients with dental agenesis. pg. 307-314 Ruiz-Mealin, E.

Viscoelastic properties of elastomeric chains: An investigation of pigment and manufacturing effects. pg. 315-326 Stroede, C.L.

Three-dimensional finite element analysis of strength, stability, and stress distribution in orthodontic anchorage: A conical, self-drilling miniscrew implant system. pg. 327-336 Singh, S.

Development of white spot lesions during orthodontic treatment: Perceptions of patients, parents, orthodontists, and general dentists. pg. 337-344 Maxfield, B.

Stress and displacement between maxillary protraction with miniplates placed at the infrazygomatic crest and the lateral nasal wall: A 3-dimensional finite element analysis. pg. 345-351 Lee, N.K.

Long-term stability of conservative orthodontic treatment in a patient with rheumatoid arthritis and severe condylar resorption. pg. 352-362 Kuroda, S.

Orthodontic treatment for a patient with a unilateral cleft lip and palate and congenitally missing maxillary lateral incisors and left second premolar. pg. 363-373 Tai, K.

A practical and effective method to increase the capacity of screws used for palatal disjunction. pg. 374-377 Pithon, M.M.

Interactive distance learning for orthodontic residents: Utilization and acceptability. pg. 378-385 Klein, K.

What to say given what was said. pg. 386-388 Jerrold, I.

Blinding or masking. pg. 389-390

KOHDA, N. EFFECTS OF BONDING MATERIALS ON THE MECHANICAL PROPERTIES OF ENAMEL AROUND ORTHODONTIC BRACKETS P. 187-195.

MAKEDONAS, D. ROOT RESORPTION DIAGNOSED WITH CONE BEAM COMPUTED TOMOGRAPHY AFTER 6 MONTHS OF ORTHODONTIC TREATMENT WITH FIXED APPLIANCE AND THE RELATION TO RISK FACTORS P. 196-201.

HAMDAN, A.M. PERCEPTIONS OF DENTAL AESTHETICS OF CLASS III AND ANTERIOR OPEN BITE MALOCCLUSIONS P. 202-208.

KONSTANTONIS, D. THE IMPACT OF EXTRACTION VS NONEXTRACTION TREATMENT ON SOFT TISSUE CHANGES IN CLASS I BORDERLINE MALOCCLUSIONS P. 209-217.

BATWA, W. EFFECT OF OCCLUSAL PLANE ON SMILE ATTRACTIVENESS P. 218-223.

CORBACHO DE MELO, M.M. RISK FACTORS FOR PERIODONTAL CHANGES IN ADULT PATIENTS WITH BANDED SECOND MOLARS DURING ORTHODONTIC TREATMENT P. 224-228.

ZHAO, X.G. VALIDITY AND RELIABILITY OF A METHOD FOR ASSESSMENT OF CERVICAL VERTEBRAL MATURATION P. 229-234.

RUSTEMEYER, J. CHANGES IN QUALITY OF LIFE AND THEIR RELATION TO CEPHALOMETRIC CHANGES IN ORTHOGNATHIC SURGERY PATIENTS P. 235-241.

FARIAS-NETO, A. THE EFFECT OF LOSS OF OCCLUSAL SUPPORT ON MANDIBULAR MORPHOLOGY IN GROWING RATS P. 242-246.

APICHART, V. THE EFFECT OF QUERCETIN ON EXPRESSION OF SOX9 AND SUBSEQUENT RELEASE OF TYPE II COLLAGEN IN SPHENO-OCCIPITAL SYNCHONDROSES OF ORGAN-CULTURED MICE P. 247-253.

KIM, S.H. MICROBIOLOGIC CHANGES IN SUBGINGIVAL PLAQUE BEFORE AND DURING THE EARLY PERIOD OF ORTHODONTIC TREATMENT P. 254-260.

MOAWAD, H.A. GROUPING PATIENTS FOR MASSETER MUSCLE GENOTYPE-PHENOTYPE STUDIES P. 261-266.

ALMOSA, N.A. CARIES RISK PROFILE USING THE CARIOGRAM IN GOVERNMENTAL AND PRIVATE ORTHODONTIC PATIENTS AT DE-BONDING P. 267-274.

YU, J.J. ACCURACY OF A CONE BEAM COMPUTED TOMOGRAPHY-GUIDED SURGICAL STENT FOR ORTHODONTIC MINI-IMPLANT PLACEMENT P. 275-283.

QIU, L. ACCURACY OF ORTHODONTIC MINISCREW IMPLANTATION GUIDED BY STEREOGRAPHIC SURGICAL STENT BASED ON CONE-BEAM CT-DERIVED 3D IMAGES P. 284-293.

UPADHYAY, M. MINI-IMPLANTS VS FIXED FUNCTIONAL APPLIANCES FOR TREATMENT OF YOUNG ADULT CLASS II FEMALE PATIENTS P. 294-303.

KIM, S.H. DO SAND BLASTED WITH LARGE GRIT AND ACID ETCHED SURFACE TREATED MINI-IMPLANTS REMAIN STATIONARY UNDER ORTHODONTIC FORCES? P. 304-312.

DALESSANDRI, D. EFFECTIVENESS OF AN INDIRECT BONDING TECHNIQUE IN REDUCING PLAQUE ACCUMULATION AROUND BRACES P. 313-318.

IJIMA, M. EFFECT OF COATING ON PROPERTIES OF ESTHETIC ORTHODONTIC NICKEL-TITANIUM WIRES P. 319-325.

OZ, A.A. THE CLINICAL AND LABORATORY EFFECTS OF BRACKET TYPE DURING CANINE DISTALIZATION WITH SLIDING MECHANICS P. 326-332.

GAJDA, S. COMPARISON OF THREE-DIMENSIONAL ORTHODONTIC LOAD SYSTEMS OF DIFFERENT COMMERCIAL ARCHWIRES FOR SPACE CLOSURE P. 333-339.

BULJAN, Z.I. IN VITRO OXIDATIVE STRESS INDUCED BY CONVENTIONAL AND SELF-LIGATING BRACKETS P. 340-345.

VICENTE, A. INFLUENCE OF FOOD-SIMULATING LIQUIDS ON BOND STRENGTH OF BRACKETS BONDED WITH A HEMA-FREE AND HEMA-CONTAINING SELF-ETCHING PRIMER P. 346-350.

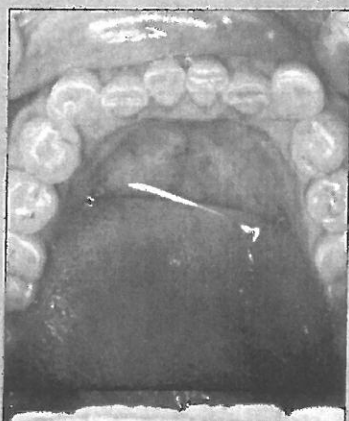
PARMAGNANI, E.A. EFFECT OF SODIUM BICARBONATE AIR ABRASIVE POLISHING ON ATTRITION AND SURFACE MICROMORPHOLOGY OF CERAMIC AND STAINLESS STEEL BRACKETS P. 351-362.

YAQOUB, O. USE OF THE CLARK TWIN BLOCK FUNCTIONAL APPLIANCE WITH AND WITHOUT AN UPPER LABIAL BOW A RANDOMIZED CONTROLLED TRIAL P. 363-369.

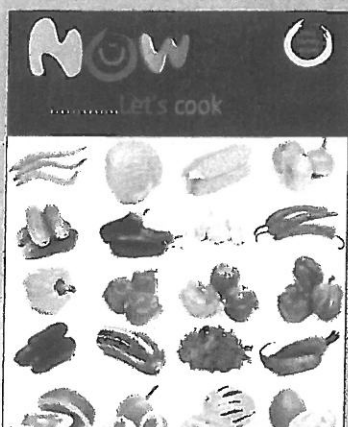
GARIB, D.G. ORTHODONTIC MOVEMENT OF A MAXILLARY INCISOR THROUGH THE MIDPALATAL SUTURE P. 370-379.



London Olympics 2012: relay



Dental crowding in the presence of tooth wear p153



Orthodontic patients offered buttery bananas p158

BDJ

BRITISH DENTAL JOURNAL
 incorporating DENTAL BUSINESS

COVER IMAGE

LONDON OLYMPICS 2012: RELAY

In recognition of the Olympic Games being hosted in London in 2012, the cover images for volume 212 of the Journal present a lighthearted take on 12 Olympic sports, illustrated with a dental twist. This issue's cover features the relay, an Olympic athletics event.

Illustration by Russ Tudor
 Email: russ@russtudor.wanadoo.co.uk
 www.russtudor.com

EDITORIAL

- 151 An older profession yet
Stephen Hancocks OBE

LETTERS

- 153 Processing errors
 Crowding with tooth wear
 An impossible position
- 154 Not a prophet
 Kitchen standards

NEWS

- 157 Cause for applause
 £28 million extra cash for dentistry
 National recruitment for orthodontics
- 158 BSSPD Roadshow conquers Britain
 Orthodontic patients offered buttery bananas
- 160 Participants wanted for emotion probing
 Search for oldest dental chair
 Science Museum will collect 3D facial images



The direct application of resin composite to treat a case of tooth wear, with the aid of a silicone matrix derived from a diagnostic wax up. Pre-op. p169



Pre-extraction bilateral impacted third molars p179

OPINION

- 163** Devoid of dentistry
S. Islam
- 165** What do we really know about UK paediatric dental general anaesthesia services?
S. Robertson, A. Ni Chaollai, T. A. Dyer

PRACTICE

- 169** Current concepts on the management of tooth wear: part 4. An overview of the restorative techniques and dental materials commonly applied for the management of tooth wear VERIFIABLE CPD PAPER
S. B. Mehta, S. Banerji, B. J. Millar, J.-M. Suarez-Feito
- 179** Iatrogenic mandibular fractures following removal of impacted third molars: an analysis of 130 cases VERIFIABLE CPD PAPER
M. Ethunandan, D. Shanahan, M. Patel

ABSTRACTS

- 187** A selection of abstracts of clinically relevant papers from other journals *John R. Radford*
The implementation of the Sharia Law in medical practice: a balance between medical ethics and patients rights
Dosing of oral penicillins in children: is big child = half an adult, small child = half a big child, baby = half a small child still the best we can do?
Body mass index measurement in schools: partnering with oral health
Perspective: obesity, inflammation, and oral infections: are microRNAs the missing link?

RESEARCH SUMMARIES

- 188** Summary of: 'A comparative anthropometric study of the position of the mental foramen in three populations'
- 190** Summary of: 'Tooth-whitening activity of a novel home-bleaching system utilising thermal diffusion: a multifactorial simultaneous evaluation of efficacy at cervical, body and incisal tooth sites'

ONLINE RESEARCH PAPERS

- E7** A comparative anthropometric study of the position of the mental foramen in three populations
A. Santini, I. Alayan
DOI: 10.1038/sj.bdj.2012.143
- E8** Tooth-whitening activity of a novel home-bleaching system utilising thermal diffusion: a multifactorial simultaneous evaluation of efficacy at cervical, body and incisal tooth sites
W. Chan, E. Lynch, M. Grootveld
DOI: 10.1038/sj.bdj.2012.144

Great offers on ticket prices for 2012

see www.bda.org/conference

BRITISH DENTAL
CONFERENCE &
EXHIBITION 2012

26-28 April 2012





London Olympics 2012: diving



Full contingent for Journal editorial team p209



Kubrick comes to Kendal p210

BDJ

BRITISH DENTAL JOURNAL
incorporating DENTAL BUSINESS

COVER IMAGE

LONDON OLYMPICS 2012: DIVING

In recognition of the Olympic Games being hosted in London in 2012, the cover images for volume 212 of the Journal present a lighthearted take on 12 Olympic sports, illustrated with a dental twist. This issue's cover features the aquatic event diving.

Illustration by Russ Tudor
Email: russ@russtudor.wanadoo.co.uk
www.russtudor.com

EDITORIAL

- 203** The Health and Social Care Bill: why all English people should be worried

Paul Batchelor

LETTERS

- 205** Open letter
The wrong direction?
- 206** Organic toothpaste
A contrary view

NEWS

- 209** GDC announcements
Optimism and humour used to combat dental fear
Full contingent for Journal editorial team
- 210** Honours, awards, appointments
Free, easy access to research
Kubrick comes to Kendal
- 212** BDA bulletin
Study targets 'community gangs'
Very brief advice training



TE9 mandibular fossil p243

OPINION

- 213** The entrepreneurial role in primary care dentistry
S. Willcocks

PRACTICE

- 219** Evidence-based dentistry: analysis of dental anxiety scales for children
VERIFIABLE CPD PAPER
A. Al-Namankany, M. de Souza, P. Ashley

ABSTRACTS

- 225** A selection of abstracts of clinically relevant papers from other journals *John R. Radford*
Salivary mutans streptococci and lactobacilli modulations in young children on consumption of probiotic ice-cream containing *Bifidobacterium lactis* Bb12 and *Lactobacillus acidophilus* La5
Guest Editorial. What is a clinical scholar?
Reversal of primary root caries lesions after daily intake of milk supplemented with fluoride and probiotic lactobacilli in older adults
Access to data in industry-sponsored trials

RESEARCH SUMMARIES

- 226** Summary of: 'Estimating the need for dental sedation. 4. Using IOSN as a referral tool'
228 Summary of: 'Access to primary dental care for cleft lip and palate patients in South Wales'

ONLINE RESEARCH PAPERS

- E9** Estimating the need for dental sedation. 4. Using IOSN as a referral tool
M. Goodwin, P. Coulthard, I. A. Pretty, C. Bridgman, L. Gough, M. O. Sharif
DOI: 10.1038/sj.bdj.2012.183
E10 Access to primary dental care for cleft lip and palate patients in South Wales VERIFIABLE CPD PAPER
S. K. Bhatia, M. M. Collard
DOI: 10.1038/sj.bdj.2012.186

EDUCATION

- 231** Evaluation of Tier 5 Medical Training Initiative opportunities in dentistry
M. A. Wilson, M. Burke

GENERAL

- 237** Intravenous lipid emulsion – rescued at LAST
S. J. Ciechanowicz, V. K. Patil
243 Europe's oldest jaw: evidence of oral pathology
A. López-Valverde, M. López-Cristiá, R. Gómez de Diego

Great offers on ticket prices for 2012

see www.bda.org/conference

BRITISH DENTAL
CONFERENCE &
EXHIBITION 2012

26-28 April 2012

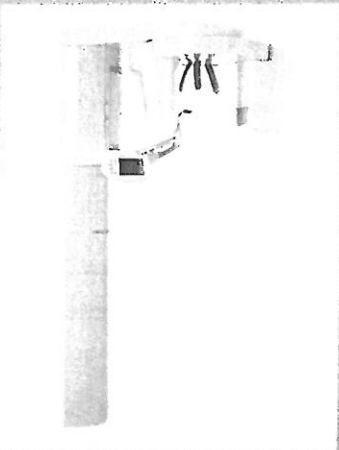
COPE COMMITTEE ON PUBLICATION ETHICS

This journal is a member of, and subscribes to the principles of, the Committee on Publication Ethics (COPE) www.publicationethics.org





Floodlights for the oral cavity
p250



One comprehensive unit p251

CPD PROGRAMME

- 247 Answers to CPD questions included in the 11 February issue of the *BDJ*
- 248 CPD Article 1 – pages 219–222 and CPD Article 2 – online article E10

PRODUCT NEWS

- 249 Dentures with super suction
Going for gold in 2012
Hot pink sells like hot cakes
- 250 Precise cutting power
Floodlights for the oral cavity
New NHS practice for Manchester
A wide range of benefits
- 251 One comprehensive unit
Enhancing patient hygiene
Smart musical reminders for patients
- 252 Setting the industry standard
Reupholstery on site
Toothache gel has new look
Crowning glory shared with customers

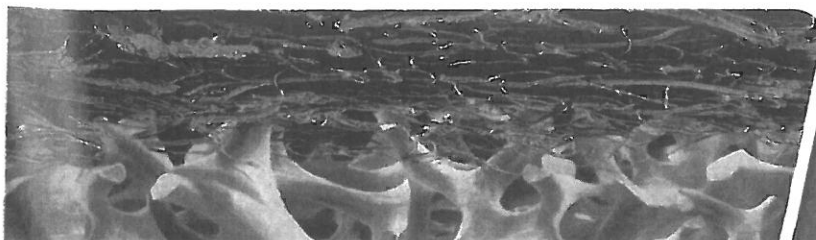
REVIEWS

- 253 Oral and intravenous bisphosphonate-induced osteonecrosis of the jaws: history, etiology, prevention and treatment, 2nd edition
Craniofacial embryogenetics and development, 2nd edition
- 254 Capital allowances for dentists
Hypodontia: a team approach to management

www.geistlich.co.uk

Geistlich Geistlich
Bio-Gide® Bio-Oss®

The proven team



LEADING REGENERATION

CLINICAL ORAL IMPLANTS RESEARCH

Discover this journal online at
WILEY ONLINE LIBRARY
wileyonlinelibrary.com/journal/clr

Volume 23 · Number 3 · March 2012

Contents

Review Article

Maxillary sinus floor augmentation with Bio-Oss or Bio-Oss mixed with autogenous bone as graft: a systematic review

263

T. Jensen, S. Schou, A. Stavropoulos, H. Terheyden & P. Holmstrup

Original Articles

Maxillary sinus augmentation with microstructured tricalcium phosphate ceramic in sheep

274

R. J. Klijn, J. W. M. Hoekstra, J. J. P. Van Den Beucken, G. J. Meijer & J. A. Jansen

In vivo performance of zirconia and titanium implants: a histomorphometric study in mini pig maxillae

281

M. Gahlert, S. Roehling, C. M. Sprecher, H. Kniha, S. Milz & K. Bormann

Failure analysis of fractured dental zirconia implants

287

M. Gahlert, D. Burtscher, I. Grunert, H. Kniha & E. Steinhauser

Osseointegration of commercial microstructured titanium implants incorporating magnesium: a histomorphometric study in rabbit cancellous bone

294

J.-W. Park, C.-H. An, S.-H. Jeong & J.-Y. Suh

Influence of topography and hydrophilicity on initial oral biofilm formation on microstructured titanium surfaces *in vitro*

301

A. Almaguer-Flores, R. Olivares-Navarrete, M. Wieland, L. A. Ximénez-Fyvie, Z. Schwartz and B. D. Boyan

Influence of two barrier membranes on staged guided bone regeneration and osseointegration of titanium implants in dogs. Part 2: augmentation using bone graft substitutes

308

I. Mihatovic, J. Becker, V. Golubovic, A. Hegewald & F. Schwarz

Clinical efficacy of a xenogeneic collagen matrix in augmenting keratinized mucosa around implants: a randomized controlled prospective clinical trial

316

R. Lorenzo, V. García, M. Orsini, C. Martin & M. Sanz

Residual periodontal pockets are a risk indicator for peri-implantitis in patients treated for periodontitis

325

J. C.-Y. Lee, N. Mattheos, K. C. Nixon & S. Ivanovski

Effect of mismatching abutments on implants with wider platforms – an experimental study in dogs

334

G. M. Baffone, D. Botticelli, L. Canullo, A. Scala, M. Beolchini & N. P. Lang

Healing outcomes at implants installed in grafted sites: an experimental study in dogs

340

E. De Santis, N. P. Lang, A. Scala, P. Viganò, L. A. Salata & D. Botticelli

Does three-dimensional imaging offer a financial benefit for treating maxillary molars with furcation involvement? – A pilot clinical case series

351

C. Walter, R. Weiger, T. Dietrich, N. P. Lang & N. U. Zitzmann

The diameter of anodic TiO₂ nanotubes affects bone formation and correlates with the bone morphogenetic protein-2 expression *in vivo*

359

C. von Wilmsowsky, S. Bauer, S. Roedl, F. W. Neukam, P. Schmuki & K. A. Schlegel

Biological monitoring of a promissory xenogenic pin for biomedical applications: a preliminary intraosseous study in rats

367

W. F. Zambuzzi, R. C. Oliveira, B. L. Subitoni, R. Menezes, R. Taga & J. M. Granjeiro

Effect of Si addition on Ca- and P-impregnated implant surfaces with nanometer-scale roughness: an experimental study in dogs

373

P. G. Coelho, R. Granato, C. Marin, R. Jimbo, S. Lin, L. Witek, M. Suzuki & E. A. Bonfante

Blood responses to titanium surface with TiO₂ nano-mesh structure

379

H.-H. Huang, J.-Y. Chen, M.-C. Lin, Y.-T. Wang, T.-L. Lee & L.-K. Chen

Bone healing in critical-size defects treated with either bone graft, membrane, or a combination of both materials: a histological and histometric study in rat tibiae

384

P. F. E. Bernabé, L. G. N. Melo, L. T. A. Cintra, J. E. Gomes-Filho, E. Dezan Jr & M. J. H. Nagata

This journal is available online at Wiley Online Library.
Visit wileyonlinelibrary.com/journal/clr to search the articles and register for table of contents e-mail alerts.

Clinical Oral Implants Research is covered by Current Contents®/Clinical Medicine, the Science Citation Index®, and SciSearch®.

Printed in Malaysia
ISSN:0905-7161



Contents

Original articles

- 229 A clinical evaluation of all-ceramic bridges placed in patients attending UK general dental practices: Three-year results
R.J. Crisp, A.J. Cowan, J. Lamb, O. Thompson, N. Tulloch, F.J.T. Burke
- 237 The effect of hydroxyapatite presence on the degree of conversion and polymerization rate in a model self-etching adhesive
Y. Zhang, Y. Wang
- 245 A method to evaluate profilometric tooth wear measurements
J.M. Rodriguez, R.S. Austin, D.W. Bartlett
- 252 Differentiation of human mesenchymal stem cells on niobium-doped fluorapatite glass-ceramics
M. Kushwaha, X. Pan, J.A. Holloway, I.L. Denry
- 261 Laboratory methods for evaluating the wear of denture teeth and their correlation with clinical results
S.D. Heintze, G. Zellweger, I. Grunert, C.A. Muñoz-Viveros, K. Hagenbuch
- 273 Retentive forces and fatigue resistance of thermoplastic resin clasps
F. Tannous, M. Steiner, R. Shahin, M. Kern
- 279 Effect of elastic modulus mismatch on failure behaviour of glass ionomer cement under Hertzian indentation
Y. Wang, B.W. Darvell
- 287 Factors affecting the cement-post interface
F. Zicari, J. De Munck, R. Scotti, I. Naert, B. Van Meerbeek
- 298 Longevity of materials for pit and fissure sealing—Results from a meta-analysis
J. Kühnisch, U. Mansmann, R. Heinrich-Weltzien, R. Hickel
- 304 Use of NIR light and upconversion phosphors in light-curable polymers
A. Stepuk, D. Mohn, R.N. Grass, M. Zehnder, K.W. Krämer, F. Pellé, A. Ferrier, W.J. Stark
- 312 Resin-composite cytotoxicity varies with shade and irradiance
B.W. Sigusch, T. Pflaum, A. Völpel, K. Gretsche, S. Hoy, D.C. Watts, K.D. Jandt
- 320 Marginal and internal fit of pressed lithium disilicate partial crowns in vitro: A three-dimensional analysis of accuracy and reproducibility
O. Schaefer, D.C. Watts, B.W. Sigusch, H. Kuepper, A. Guentsch
- 327 Effects of resinous monomers on the odontogenic differentiation and mineralization potential of highly proliferative and clonogenic cultured apical papilla stem cells
A. Bakopoulou, G. Leyhausen, J. Volk, P. Koidis, W. Geurtsen

Online only article

- e19 Repair of silorane composite—Using the same substrate or a methacrylate-based composite?
A. Wiegand, B. Stawarczyk, W. Buchalla, T.T. Tauböck, M. Özcan, T. Attin

Indexing Services

Dental Materials is indexed by *Index Medicus*, *BIOSIS*, *Current Contents*, *SciSearch*, *Research Alert*, *UnCover*, *Reference Update*, *UMI*, *Silver Platter*, *Excerpta Medica*, *CAB International* and *CINAHL*. The journal is available in microfilm from *UMI*.

Available online at www.sciencedirect.com

SciVerse ScienceDirect

This journal is part of Science Direct's free alerting service which sends tables of contents and favourite topics for Elsevier books and journals. You can register by clicking "Alerts" at www.sciencedirect.com



Amsterdam • Boston • London • New York • Oxford • Paris • Philadelphia • San Diego • St. Louis

En este número...

EN PORTADA

46 | Manuel Berrazueta

Fecundo en ideas y en proyectos, en 2003 fue por primera vez a Mauritania. De ese viaje nació la ONG "Dentistas en África", con la que ha logrado crear en Atar la clínica dental mejor equipada de todo el país africano. A la espera de que se reestablezcan algún día las condiciones de seguridad en Mauritania, "Dentistas en África" ha suspendido su trabajo allí. Mientras tanto, la actividad de Manuel Berrazueta no cesa. Dinámico y muy rápido en todo lo que hace, siempre tiene algo entre manos. Desde volar con su avioneta hasta preparar algún pequeño programa informático para su consulta, una consulta incorporada totalmente a la odontología digital.

ACTUALIDAD

20 | La profesión celebra el Día de Santa Apolonia

Como cada año, los diferentes colegios profesionales se han esmerado para celebrar la festividad de Santa Apolonia, la patrona de los dentistas. Los actos conmemorativos han estado cargados de momentos tanto solemnes como lúdicos, perfectos para estrechar los lazos de compañerismo.

ENTREVISTA

52 | José García Abad

La pluma ágil e inteligente de José García Abad analiza en *El hundimiento socialista* la debacle del PSOE en las elecciones generales del 20 de noviembre. Editor de los semanarios *El Nuevo Lunes* y *El Siglo*, y analista político, García Abad aporta en su último libro los datos imprescindibles, muchos de ellos inéditos, para entender la personalidad y el mandato de los cuatro líderes socialistas de la democracia.

LOS DESAYUNOS DE EL DENTISTA

38 | Publicidad: ¿Todo vale?

Coincidiendo con Expodental, *El Dentista* ha reunido en las instalaciones de Ifema a Alfonso Villa Vigil, presidente del Consejo General de Dentistas; Germán Zarándieta, presidente de la Comisión Deontológica del COEM; Ángel del Pino, presidente de la Federación Nacional de Empresas de Publicidad, y a Ricardo de Lorenzo, director del bufete "De Lorenzo Abogados", para reflexionar sobre los límites de la publicidad en el campo de la odontología.

LA MIRADA EN EL ESPEJO

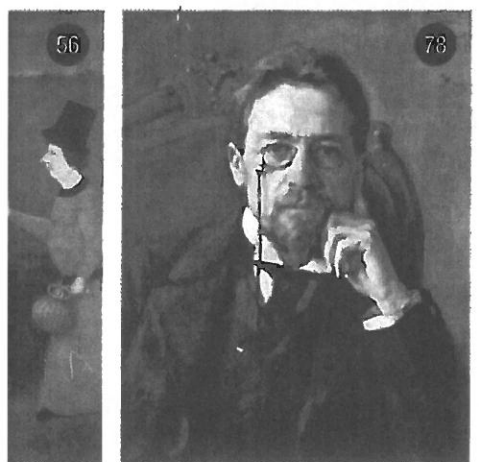
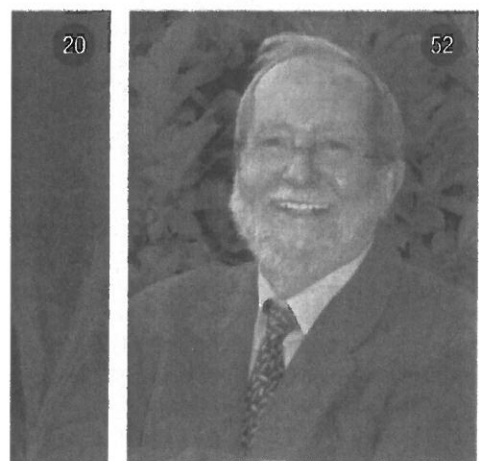
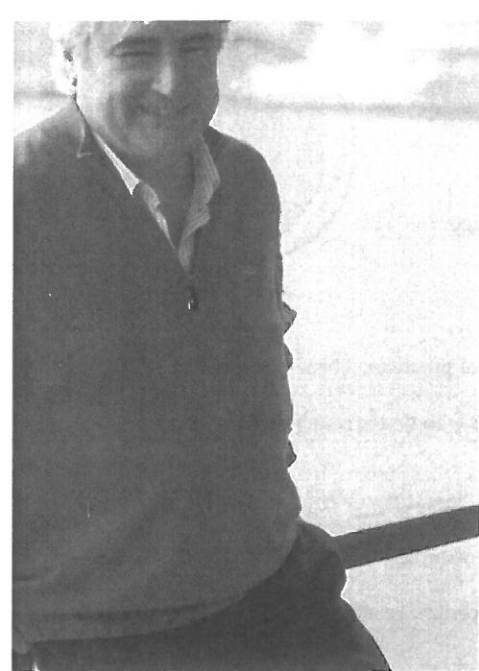
56 | El dentista Duchesne

La trayectoria vital del dentista parisino Duchesne es realmente extraordinaria y sorprendente. Es un ejemplo claro de que la predestinación no existe y de que el hombre puede transitar por caminos insólitos a fuerza de voluntad y carácter. Julio González Iglesias desvela en este artículo los vericuetos inverosímiles que llevaron a Duchesne a ocuparse de una materia, la dentistería, con la cual ni él mismo había soñado.

LA ODONTOLOGÍA EN LA LITERATURA

78 | La cirugía, de Anton Chéjov

La Cirugía, de Anton Chéjov, es el primero de una serie de relatos cortos relacionados con la dentistería que *El Dentista* tiene la intención de ofrecer a sus lectores dentro de la nueva sección "La Odontología en la literatura". En *La Cirugía*, Chéjov narra las penalidades que pasa el sacristán Vonmiglásov cuando va a sacarse una muela al hospital del Zemstvo.



ACTUALIDAD 10

- Expodental reunió en su decimosegunda edición a una amplia representación de la industria dental en Madrid 10
- El público desbordó las previsiones más optimistas de asistencia a los actos programados por el COEM en la festividad de Santa Apolonia..... 11



- «Es muy gratificante recibir este premio en el caso de mi vida profesional, que siempre ha estado dedicada al servicio del sector dental», José María Herranz, presidente honorífico de GACETA DENTAL..... 16
- Celebraciones de Sta. Apolonia en: Córdoba, Galicia, Tenerife, Cádiz, Navarra, Valencia, Sevilla, Murcia, Jaén, Las Palmas y Extremadura 17
- Sevilla acoge la IX Jornada de Blanqueamiento Dental..... 24
- El equipo de Cirugía Bucal de la Universidad de Sevilla imparte un curso de Implantología Avanzada..... 25
- El Consejo General de Colegios de Dentistas solicita a Autocontrol la retirada de la actual publicidad de Vitaldent..... 26

- Carta del COEM sobre la polémica campaña de Vitaldent 26
- Inauguración de la nueva sede del Colegio Oficial de Odontólogos y Estomatólogos de Lugo 28
- SEPA y SECIB firman un acuerdo de colaboración 28
- Convocado el Concurso de Premios 2012 de la Real Academia de Medicina y Cirugía de Cádiz 28
- El Colegio de Odontólogos y Estomatólogos de la XI Región organizó un curso sobre Ortodoncia en Ourense..... 29
- El golpe en un diente puede provocar daños irreversibles y tratamientos costosos si no se trata a tiempo..... 30
- Se edita el libro «Patología de las glándulas salivales»..... 32
- Los cirujanos orales y maxilofaciales advierten que el casco puede salvar vidas en el esquí.... 32
- Investigadores de la Universidad Europea de Madrid analizan los genes implicados en la adicción al tabaco..... 33
- Comienzan a perfilarse los preparativos para la IDS 2013 34
- El Colegio de Higienistas de Madrid inicia su Formación Continuada..... 34
- Nuevas tecnologías para el diagnóstico precoz de la caries..... 35
- Celebrado el curso «Endodoncia actual para el odontólogo general»..... 35

ENTREVISTA 38

- Dr. Rafael Roldán Villalobos, presidente del Colegio de Odontólogos y Estomatólogos de Córdoba..... 38



Progressive Orthodontic Seminars

PRÓXIMO COMIENZO DE
PROGRESSIVE ORTHODONTIC
SEMINARS EN BILBAO

Primer seminario, del 21 al 24 de abril

¡¡ ÚLTIMAS PLAZAS !!

¡Ya está abierto el plazo de inscripción para el próximo curso de Madrid!

Más información
en el

900 122 397

en la página 255

www.progressiveseminars.com/spain

CONGRESOS 44

Dr. Luis María Ilzarbe, presidente del XXVI Congreso Nacional y XIX Congreso Internacional de la Sociedad Española de Implantes (SEI).... 44

DESAYUNOS GACETA DENTAL 48

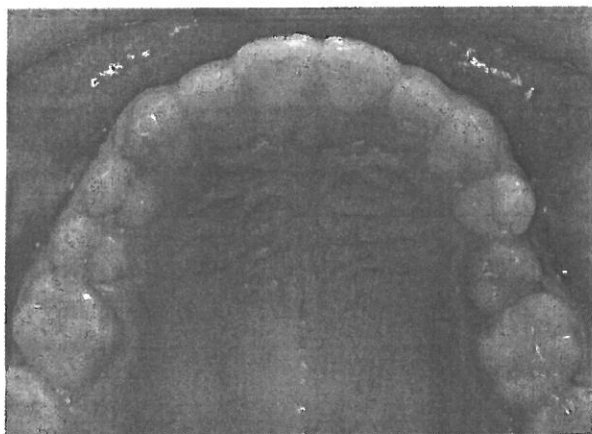


Especialidades odontológicas: Necesarias sí, pero ¿con qué modelo y quién las regula?..... 48

DOSSIER SEPA 62

Técnicas de cirugía mucogingival para el tratamiento de la recesión gingival, por el Dr. Andrés Pascual y colabs. 62

CASO CLÍNICO 74



Cirugía de la maloclusión clase III: ¿cuándo hacer sólo cirugía mandibular?, por el Dr. César Colmenero y colabs..... 74

Colocación de implante mediante expansión ósea y carga inmediata, por la Dra. Leana Kathleen y colabs..... 92

Cirugía plástica periodontal: factores críticos para un resultado predecible, por el Dr. Fabio Vignoletti y colabs. 104

Rehabilitación maxilar completa fija implantosoportada, por el Dr. Fernando Rojas 114

FICHAS 128

Tratamiento multidisciplinar del sector anterior estético (I), por el Dr. Alfonso García y colabs. 128

INFORME 146

Ajuste oclusal de los dientes en la prótesis dental removible, por M. Helfer y colabs..... 146

LABORATORIO 164

Claves estéticas y funcionales en rehabilitación oral integral, por Salvatore Fiorillo..... 164

BIBLIOTECA 180

FORMACIÓN 182

El nuevo título de Técnico Superior en Prótesis Dental, por José María Fonollosa Pla..... 182

RIESGOS LABORALES 188

Protección radiológica, por el Dr. Antonio Olmos y colabs..... 188

MERCADO DENTAL 198

2012: Las tendencias de marketing para la clínica odontológica, por Roberto Rosso 198

GESTIÓN 202

Sistemas de incentivos en la clínica dental, por Marcial Hernández 202

CLAVES MULTIMEDIA 206

Informatizar la consulta, por Iñaki Lauret..... 206

FOTOGRAFÍA DIGITAL 212

Por Marcel Martín..... 212

EMPRESAS 214

PRODUCTOS 228

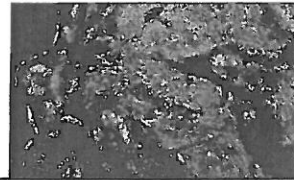
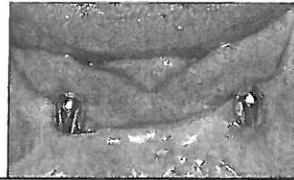
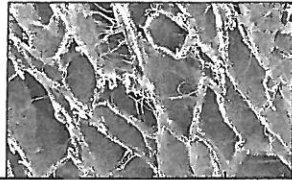
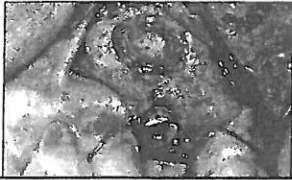
AGENDA 240

ANUNCIOS BREVES 286

CALENDARIO DE CONGRESOS 290

DIRECTORIO 292

- 29 Digitizing Implant Position Locators on Master Casts: Comparison of a Noncontact Scanner and a Contact-Probe Scanner**
Stefan Holst/Anna Persson/Manfred Wichmann/Matthias Karl
- 36 Influence of Abutment Height and Surface Roughness on In Vitro Retention of Three Luting Agents**
Jordi Cano-Batalla/Joan Soliva-Garriga/Marc Campillo-Funollet/
Carlos A. Muñoz-Viveros/Lluís Giner-Tarrida
- 42 Screw Loosening with Interchangeable Abutments in Internally Connected Implants After Cyclic Loading**
Seong Kyun Kim/Jai Young Koak/Seong Joo Heo/Thomas D. Taylor/Sook Ryoo/Su Young Lee
- 48 Relationship Between Subsinus Bone Height and Bone Volume Requirements for Dental Implants: A Human Radiographic Study**
Dana Kopecka/Antonin Simunek/Tomas Brazda/Martin Rota/Radovan Slezak/Lukas Capek
- 55 The Effect of Changes in Head Position on Enlargement of Structures During Panoramic Radiography**
Peter Pfeiffer/Sandra Bewersdorf/Petra Schmage
- 64 Effect of Oral Bacteria on the Mechanical Behavior of Titanium Dental Implants**
Francisco Javier Gil/Ana Rodriguez/Eduardo Espinar/Jose Maria Llamas/
Esteban Padullés/Antonio Juárez
- 69 Trends in Funding, Internationalization, and Types of Study for Original Articles Published in Five Implant-Related Journals Between 2005 and 2009**
Valentim Adelino Ricardo Barão/Nodesh Shyamsunder/Judy Chia-Chun Yuan/
Kent L. Knoernschild/Wirley Gonçalves Assunção/Cortino Sukotjo
- 77 Effect of Implant Surface Properties on Peri-Implant Bone Healing: Implant Stability and Microcomputed Tomographic Analysis**
Samar H. Al-Moaber/Khalid Al-Hamdan/Rüdiger Junker/John A. Jansen
- 84 Histomorphometric Analysis Following Augmentation of the Anterior Atrophic Maxilla with Cancellous Bone Block Allograft**
Joseph Nissan/Vered Marilena/Ora Gross/Ofer Mardinger/Gavriel Chaushu
- 90 Endosseous Arteries in the Anterior Mandible: Literature Review**
Georgios E. Romanos/Bhumija Gupta/Roberto Crespi
- 95 Injectable Magnesium-Enriched Hydroxyapatite Putty in Peri-Implant Defects: A Histomorphometric Analysis in Pigs**
Roberto Crespi/Paolo Capparè/Alessandro Addis/Enrico Gherlone
- 102 A Systematic Review of Biologic and Technical Complications with Fixed Implant Rehabilitations for Edentulous Patients**
Panos Papaspyridakos/Chun-Jung Chen/Sung-Kiang Chuang/
Hans-Peter Weber/German O. Gallucci
- 111 Comparison of Restoratively Projected and Surgically Acceptable Virtual Implant Position for Mandibular Overdentures**
William Scarfe/William Shane Vaughn/Allan G. Farman/Bryan T. Harris/Mary M. Paris
- 119 In Vivo Comparison of Two Bone Substitutes in the Distal Femur of the Rabbit**
Carlo Bertoldi/Davide Zaffe



- 128 Accuracy of a Newly Developed Open-Source System for Dental Implant Planning**
Timo Dreiseidler/Daniel Tandon/Lutz Ritter/Jörg Neugebauer/
Robert A. Mischkowski/Martin Scheer/Joachim E. Zöller
- 138 Effect of the Platform-Switching Technique on Preservation of Peri-implant Marginal Bone: A Systematic Review**
Maram M. Al-Nsour/Hsun-Liang Chan/Hom-Lay Wang
- 146 Biocompatibility and Biodegradation of a Native Porcine Pericardium Membrane: Results of In Vitro and In Vivo Examinations**
Daniel Rothamel/Frank Schwarz/Tim Fienitz/Ralf Smeets/Timo Dreiseidler/
Lutz Ritter/Arndt Happe/Joachim Zöller
- 155 Long-Term Neuromuscular Status in Overdenture and Complete Denture Patients with Severe Mandibular Atrophy**
Caroline Spitzl/Peter Pröschel/Manfred Wichmann/Siegfried Heckmann
- 162 Stability and Marginal Bone Loss with Three Types of Early Loaded Implants During the First Year After Loading**
Argir Liaje/Yasemin Kulak Ozkan/Yaşar Ozkan/Burçin Vanlıoğlu
- 173 Immediate Provisionalization of 3.0-mm-Diameter Implants Replacing Single Missing Maxillary and Mandibular Incisors: 1-Year Prospective Study**
Kotaro Oyama/Joseph Y. K. Kan/Kitichai Rungcharassaeng/Jaime Lozada
- 181 Clinical and Radiologic Evaluation of 70 Immediately Loaded Single Implants in the Maxillary Esthetic Zone: Preliminary Results After 1 Year of Functional Loading**
Luca Di Alberti/Federica Donnini/Claudio Di Alberti/Michele Camerino/
Nicola Sgaramella/Lorenzo Lo Muzio
- 187 Stability Measurements of Craniofacial Implants by Means of Resonance Frequency Analysis: 1-Year Clinical Pilot Study**
Secil Karakoca-Nemli/Cemal Aydin/Handan Yilmaz/Şenol Sarısoy
- 194 A Retrospective Analysis of Immediately Placed Implants in 418 Sites Exhibiting Periapical Pathology: Results and Clinical Considerations**
Paul Fugazzotto
- 203 A Retrospective Study of the Risk Factors for Ridge Expansion with Self-Tapping Osteotomes in Dental Implant Surgery**
Javier Montero/Antonio López-Valverde/Rafael Gómez de Diego
- 211 Bony Window Repositioning Without Using a Barrier Membrane in the Lateral Approach for Maxillary Sinus Bone Grafts: Clinical and Radiologic Results at 6 Months**
Yong-Seok Cho/Hyun-Kyung Park/Chang-Joo Park
- 218 Implant-Supported First Molar Restorations: Correlation of Finite Element Analysis with Clinical Outcomes**
Zeev Ormianer/Ady Palti/Burak Demiralp/Guillaume Heller/Israel Lewinstein/Philippe G. Khayat

CLINICAL APPLICATIONS

ONLINE ONLY ABSTRACT

DEPARTMENTS

- 17 Editorial 230 Meetings
229 2011 Reviewers

Papaspyridakos, P. Flapless CAD/CAM-guided surgery for staged transition from failing dentition to complete arch implant rehabilitation: A 3-year clinical report. pg. 143-150

Wadhvani, C. Radiographic detection and characteristic patterns of residual excess cement associated with cement-retained implant restorations: A clinical report. pg. 151-157

Schneider, R. Complex mandibular rehabilitation of a self-inflicted gunshot wound: A clinical report. pg. 158-162

Tan, J.P. The use of slow heating and slow cooling regimens to strengthen porcelain fused to zirconia. pg. 163-169

Raigrodski, A.J. Survival and complications of zirconia-based fixed dental prostheses: A systematic review. pg. 170-177

Sarafianou, A. Matching repeatability and interdevice agreement of 2 intraoral spectrophotometers. pg. 178-185

O'Kray, H. Supplementing retention through crown/preparation modification: An in vitro study. pg. 186-190

Fromentin, O. Wear of matrix overdenture attachments after one to eight years of clinical use. pg. 191-198

Madrid, C. Radio frequency identification (RFID) of dentures in long-term care facilities. pg. 199-202

Schoenbaum, T. Direct custom implant impression copings for the preservation of the pontic receptor site architecture. pg. 203-206

Rajendran, V. Denture marker using a two-dimensional bar code. pg. 207-208

Hsu, Y. Fabrication of a definitive cast to facilitate the delivery of an implant-tissue supported overdenture. pg. 209-210

Edwards, P.C. "Strength in Numbers". Editorial pg. 283-285

Kumar, V.V. Clinicopathologic conference: Multiquadrant expansile fibro-osseous lesion in a juvenile. pg. 286-292

Kaya, G.S. A comparison of diode laser and Er:YAG lasers in the treatment of gingival melanin pigmentation. pg. 293-299

Li, J. A preliminary study on the hard-soft tissue relationships among unoperated secondary unilateral cleft nose deformities. pg. 300-307

Andrade G. Evaluation in vitro of the tensile strength of crimpable hooks used for stabilization in orthognathic surgery. pg. 308-312

Yang, F. Osteoblast response to porous titanium surfaces coated with zinc-substituted hydroxyapatite. pg. 313-318

Saueressig, F. Morphofunctional analysis of sciatic nerve and motor performance of rats after cryotherapy with liquid nitrogen. pg. 319-326

Jiang, Z. Repair of calvarial defects in rabbits with platelet-rich plasma as the scaffold for carrying bone marrow stromal cells. pg. 327-333

Yang, H.M. Sihler-stain study of buccal nerve distribution and its clinical implications. pg. 334-339

Kaya, M. Local treatment of chronic osteomyelitis with surgical debridement and tigecycline-impregnated calcium hydroxyapatite: an experimental study. pg. 340-347

Lee, S.W. Comparative study of hydroxyapatite from eggshells and synthetic hydroxyapatite for bone regeneration. pg. 348-355

Wang, G. CAD/CAM and rapid prototyped titanium for reconstruction of ramus defect and condylar fracture caused by mandibular reduction. pg. 356-361

Evans, D. Increased risk of mortality and loss to follow-up among HIV-positive patients with oropharyngeal candidiasis and malnutrition before antiretroviral therapy initiation: a retrospective analysis from a large urban cohort in Johannesburg, South Africa. pg. 362-372

Spanemberg, J. C. Effect of an herbal compound for treatment of burning mouth syndrome: randomized, controlled, double-blind clinical trial. **pg. 373-377**

Portela, M.B. Differential collagenolytic activity of *Candida albicans* isolated from oral mucosa and dentinal carious lesions of HIV-infected children. **pg. 378-383**

Lerman, M. Localized mandibular enlargement in end-stage renal disease: two case reports and a review of the literature. **pg. 384-390**

Oliveira-Neto, H. A comparative study of microvessel density in squamous cell carcinoma of the oral cavity and lip. **pg. 391-398**

Tanaka, T. Tetraploidy with double t(11;18) of recurrent MALT lymphoma in buccal mucosa: a case report. **pg. 399-403**

Orhan, K. Unusually severe limitation of the jaw attributable to fibrodysplasia ossificans progressiva: a case report with cone-beam computed tomography findings. **pg. 404-409**

Mathew, R. Unusual cone-beam computerized tomography presentation of traumatic (simple) bone cyst: case report and radiographic analysis. **pg. 410-413**

Chindasombatjaroen, J. Calcifying cystic odontogenic tumor associated with other lesions: case report with cone-beam computed tomography findings. **pg. 414-420**

Lubbers, H. No plane is the best one-the volume is!! **Letter pg. 421**

Zheng, J.W. Comment on surgical management of solitary venous malformation in the midcheek region. **Letter pg. 421-422**

Zhong, L. Comment on surgical management of solitary venous malformation in the midcheek region: reply. **Letter pg. 422-423**

Shoor, H. Should pain be used as predictor of prognosis in oral squamous cell carcinomas?. **Letter pg. 423**

Sato, J. Should pain be used as predictor of prognosis in oral squamous cell carcinomas. **Letter pg. 424**

www.coem.org.es

sumario

marzo 2012



C/ Vitrubio 32, 28006 Madrid
Tel. 91 561 29 05 / Fax: 91 563 28 30
Publicación mensual: 10 números al año,
excepto los meses de agosto y septiembre.

Palabra clave: Prof.Dent.

www.coem.org.es

e-mail: revista@coem.org.es
colmadrid@coem.org.es
cientifica@coem.org.es
presidente.coem@coem.org.es
comdeontologica@coem.org.es

Asociación: Ilustre Colegio Oficial de
Odontólogos y Estomatólogos de la 1ª Región.
Tel.: 91 561 29 05 e-mail: revista@coem.org.es

Participación anual (10 números): 24,41€/año
Números sueltos: 8 €/unidad.
Precio de este número: 7.700 ejemplares

Publicidad:
Departamento de Publicidad de Star Ibérica, S.A.
Tel.: 91 654 67 92 - publicidad@stariberica.com

Publicación autorizada por el Mº de Sanidad como soporte
válido: 184-R-CM

© 1998
D. Legal: M-3366-74
ISSN: 0210-2102

Producción: Running Producción, S.A.
gráfica: Avda. de la Victoria, 56. Tel.: 91 372 87 84
Distribución: Apamara, S.L. Bascañuelos, 13 Nave K.
Tel.: 91 798 85 84

Los estudios, opiniones y/o manifestaciones efectuadas en los artículos insertados en la presente revista, así como la publicidad contenida en la misma, son exclusiva responsabilidad de sus autores o empresas que se publicitan. En cualquier caso, los estudios, las opiniones y/o manifestaciones efectuadas así como las publicidades insertadas no han sido ni adoptadas, ni aprobadas ni consensuadas de ningún modo por la Junta de Gobierno, por lo que no deben tomarse, en ningún caso, como actos propios del Colegio Oficial de Odontólogos y Estomatólogos de la Primera Región, quien a estos efectos queda exonerada de cualquier responsabilidad que pudiera derivarse al respecto, ni garantiza la exactitud de los datos incluidos ni acepta responsabilidad alguna por el uso que se haga posteriormente de los mismos. De la misma manera, las opiniones y hechos consignados en cada artículo en la revista son de exclusiva responsabilidad de sus autores. El Colegio no se hace responsable, en ningún caso, de la credibilidad y autenticidad de los trabajos publicados.

TRATAMIENTO DE DATOS DE CARÁCTER PERSONAL

De acuerdo con lo establecido en la Ley Orgánica 15/1999, de 13 de Diciembre, de Protección de Datos de Carácter Personal, se les informa que sus datos serán tratados e incorporados a un fichero titularidad del Ilustre Colegio de Odontólogos y Estomatólogos de la I región, utilizándose para la gestión del envío de la revista, así como el envío de información sobre actividades o eventos relacionados con la odontología. Puede ejercitar sus derechos de acceso, rectificación, cancelación y oposición dirigiéndose a las dependencias del Colegio, sito en la C/ Vitrubio, nº 32, 28006 Madrid, mediante solicitud debidamente cumplimentada, que está a su disposición en el Colegio.

 ¿Quieres anunciarte en
ProfesiónDental?
Infórmate llamando al **91 654 67 92**
o en **publicidad@stariberica.com**

EDITORIAL 4

Información Profesional

NOTICIAS DEL COLEGIO 6

Reportaje especial Santa Apolonia	6
Campeonato de dominó	7
Torneo de padel	8
Torneo de mus	13
Torneo de dardos	14
Torneo de golf	16
Cóctel y fiesta en Pachá	21
Misa en el Santuario de María Auxiliadora	24
Acto colegial y cóctel en el Museo Reina Sofía	25
Galardones y fotos de los galardonados	26
Extracto del discurso del Presidente	42
III Jornadas de Desigualdades en Salud Bucodental	46
Carta del Dr. Abdul Nassim	48
Bélgica, Luxemburgo, Holanda	49
Curso de Dirección de Instalaciones de Radiodiagnóstico	52
Firma del acuerdo COEM-UEM	53
XIII Foro de Actualidad Odontológica	54
Solicitud del Título para Expediente	54
Acuerdos de Cooperación en Camerún	55
Documentación "La organización como paciente crónico"	56
Nota Vitaldent	57

NARRACIONES BREVES 58

JUNTA DE GOBIERNO 64

LA JUNTA INFORMA 66

MUNDO UNIVERSITARIO 67

ODONTOLOGÍA E INFORMÁTICA 68

Formación continuada

ACTIVIDADES DE LA COMISIÓN CIENTÍFICA 72

AGENDA DE ACTIVIDADES Y CURSOS 74

Bolsa de Trabajo

NOTICIAS DE EMPRESA 79

ANUNCIOS BREVES 79

RELACIÓN DE ANUNCIANTES DE ESTE NÚMERO

ALBERTO GARCÍA	AMA	ARQUITECTURA EN LÍNEA
AS AQUICENTURA SANITARIA	BANCO SABADELL	CLINICA APARICIO
EDELSO	FIDOTEC	INFOCITEC
INFOMED	LEDUR24H	LERCH&LERCH ARQUITECTOS
LUIS&TACHI	SEPEs	TECNODENTAL
UEM	URBAMA	

Ilustre Colegio Oficial de Odontólogos y Estomatólogos de la 1ª Región.

