

MIRADA EN EL ESPEJO

- "La Odontología en la pintura satírica inglesa de los siglos XVIII y XIX (IV): Cruickshank, Bunbury, Dighton, Wilson y algún anónimo", por el Dr. Julio González Iglesias..... 121

ENTREVISTA

- Con los doctores Pere Riutord Sbert y Héctor Tafalla, presidente y secretario general de la Asociación Nacional de Dentistas Autónomos 136
- Con el doctor Óscar Castro, presidente del Sindicato Español de Dentistas..... 144

PÁGINAS CONGRESUALES

- 44 Reunión Anual de la SEPA 152
- I Encuentro de Implantología Oral en el Camino de Santiago y V Reunión Universitaria Internacional de Implantología Oral 158

CIENCIA

- "Aplicación complementaria de la radiación láser de Er:YAG y Nd:YAG en el tratamiento no quirúrgico de la periodontitis crónica: estudio comparativo de sus efectos clínicos, antiinflamatorios y antimicrobianos", por la Dra. Clara Gómez y cols. 164
- "Cirugía plástica periodontal como solución a una recesión gingival localizada", por el Dr. Sebastián Barranco-Piedra y cols. 186

LABORATORIO

- "Consideraciones en restauraciones estéticas", por el D. Antonio Cimadevilla 196

PRÁCTICA CLÍNICA

- "Taller de higiene y salud bucodental", por D.ª Laura Bobillo Cinta y col. 210

FICHAS

- "Tratamiento implantológico del diente inviabile: ¿Cuándo ponemos el implante, cuándo esperamos?", por el Dr. Alfonso García Pérez y cols. 222

ORTOGNÁTICA Y ORTODONCIA. CASO CLÍNICO

- "Ortodoncia y cirugía ortognática mandibular", por el Dr. Javier Prieto Serrano y cols. 236

ODONTOLOGÍA FORENSE

- "Variabilidad y comportamiento: el estudio de los caracteres dentales no-métricos en identificación", por la Dra. M.ª Elena Labajo 254

MERCADO DENTAL

- "¿Puede ser la situación coyuntural causa del gran aumento de clínicas que realizan tratamientos de implantología?", por D. Roberto Rosso 266

GESTIÓN

- "El plan de marketing en la empresa odontológica", por D. Marcial Hernández..... 270

FOTOGRAFÍA DIGITAL

- Por D. Marcel Martín..... 273

EMPRESAS

- 276

PRODUCTOS

- 295

AGENDA

- 313



Implant Dentistry

THE OFFICIAL JOURNAL OF THE INTERNATIONAL CONGRESS OF ORAL
IMPLANTOLOGISTS

Volume 19, Number 1, 2010

- 1** Editorial
Sipping Through a Straw
Morton L. Perel

CLINICAL SCIENCE AND TECHNOLOGY

- 2** Guided Bone Regeneration Using Nonexpanded Polytetrafluoroethylene Membranes in Preparation for Dental Implant Placements—A Report of 420 Cases
Eliane Porto Barboza, Bianca Stutz, Vinícius Farias Ferreira, and Waldimir Carvalho
- 8** Screw- Versus Cement-Retained Implant Restorations: Current Concepts
Angie Lee, Kozue Okayasu, and Hom-Lay Wang
- 16** Migrated Maxillary Implant Removed via Semilunar Hiatus by Transnasal Endoscope
Akira Kitamura and Jorge L. Zeredo
- 21** Placement of Implant After Bone Graft Using J Block Allograft
Su-Gwan Kim, Jin-Sung Park, and Sung-Chul Lim

BASIC AND CLINICAL RESEARCH

- 29** CTX Biochemical Marker of Bone Metabolism. Is It a Reliable Predictor of Bisphosphonate-Associated Osteonecrosis of the Jaws After Surgery?
Part II: A Prospective Clinical Study
Cameron Y. S. Lee and Jon B. Suzuki

(continues on next page)



www.implantdent.org





Implant Dentistry

THE OFFICIAL JOURNAL OF THE INTERNATIONAL CONGRESS OF ORAL
IMPLANTOLOGISTS

Volume 19, Number 1, 2010

(continued from previous page)

39

Finite Element Analysis of 2 Immediate Loading Systems in Edentulous Mandible: Rigid and Semirigid Splinting of Implants

Marcelo Fontes Teixeira, Saturnino Aparecido Ramalho, Ivete Aparecida de Mattias Sartori, and Roberto Brunow Lehmann

50

Evaluation of Rotational Freedom of In-Ceram Ceramic Blank Abutments Before and After Infiltration

Philippe Aramouni, Paolo Vigolo, Zeina Majzoub, Elie Zebouni, Ziad Salameh, and Khalid Almas

57

Smoking, Diabetes Mellitus, Periodontitis, and Supportive Periodontal Treatment as Factors Associated With Dental Implant Survival: A Long-Term Retrospective Evaluation of Patients Followed for Up to 10 Years

Rachel Anner, Yoav Grossmann, Yael Anner, and Liran Levin

ACADEMIA, EDUCATION, PRACTICE

65

Implant Restoration of Partially Edentulous Ridges: A Review of 121 Nigerian Patients

Patricia A. Akeredolu, Wasilu L. Adeyemo, Olurotimi B. Omololu, and Olabode Karunwi

73

Implant Survival Rates in a Condensed Surgical and Prosthetic Training Program for General Practitioners in Dental Implants

Souheil Hussaini, Saul Weiner, and Mina Ahmad

81

Success Rate of Immediate Implants Placed and Restored by Novice Operators

Ricardo Vidal, Henry Greenwell, Margaret Hill, Georgios Papageorgakopoulos, and James P. Scheetz

IMPLANT DENTISTRY (ISSN 1056-6163) is published bimonthly (issues 1-6) for the International Congress of Oral Implantologists and its component and affiliated societies by Lippincott Williams & Wilkins, 16522 Hunters Green Parkway, Hagerstown, MD 21740-2116. Business offices are located at 530 Walnut Street, Philadelphia, PA 19106-3621. For Society information, contact: The ICOI at 248 Lorraine Ave., Upper Montclair, NJ 07043-1454; phone, 1.973.783.6300; fax, 1.973.783.1175; e-mail: icoi@dentalimplants.com; web-site: www.dentalimplants.com. Subscription rates: individual \$314 (\$379 foreign); institutions \$446 (\$511 foreign); single copy \$85. Foreign prices exclude Japan (see *General Information*). Prices subject to change. The GST number for Canadian subscribers is 895524239. The Canadian Publication Agreement Number is 580309. Periodicals postage paid at Hagerstown, MD, and at additional mailing offices. POSTMASTER: Send changes (FORM 3579) to IMPLANT DENTISTRY, P.O. Box 1550, Hagerstown, MD 21741. Country of origin USA. Copyright © 2010 by Lippincott Williams & Wilkins, Inc. Indexed by *Index to Dental Lit./Medline*. DISCLAIMER—The statements and opinions contained in the articles of this Journal are solely those of the individual authors and contributors and not of Lippincott Williams & Wilkins or the sponsoring Societies. The appearance of advertisements in the Journal is not a warranty, endorsement or approval of the products or services advertised or of their effectiveness, quality or safety. The Publisher and the sponsoring Societies disclaim responsibility for any injury to persons or property resulting from any ideas or products referred to in the articles or advertisements.

Contents

Invited Review Paper

- Prevention of thrombosis after microvascular tissue transfer in the head and neck. A review of the literature and the state of affairs in Dutch Head and Neck Cancer Centers
M.T. Brands, S.C. van den Bosch, F.J. Dieleman, S.J. Bergé and M.A.W. Merkk

101

Leading Clinical Paper

- Antibiotic prophylaxis in third molar surgery: A randomized double-blind placebo-controlled clinical trial using split-mouth technique
A. Siddiqi, J.A. Morkel and S. Zafar

107

Clinical Papers

- Obstructive sleep apnea in children with syndromic craniosynostosis: long-term respiratory outcome of midface advancement
N. Bannink, E. Nout, E.B. Wolvius, H.L.J. Hoeve, K.F.M. Joosten and I.M.J. Mathijssen 115
- Craniofacial morphological outcome following treatment with three different surgical protocols for complete unilateral cleft lip and palate: a preliminary study
M. Kulewicz and Z. Dudkiewicz 122
- Changes in nasal structures following orthopaedic and surgically assisted rapid maxillary expansion
A.T. Altug-Atac, M.S. Atac, G. Kurt and H.A. Karasud 129
- Impact of impacted mandibular third molars in mandibular angle and condylar fractures
A. Thangavelu, R. Yoganandha and A. Vaidhyanathan 136
- Extra-capsular dissection for benign parotid tumours
E.A. Shehata 140
- Clinicopathological study and treatment outcomes of 121 cases of ameloblastomas
E.R. Fregnani, D.E. da Cruz Perez, O.P. de Almeida, L.P. Kowalski, F.A. Soares and F. de Abreu Alves 145
- Surgical challenges in the treatment of advanced cases of ameloblastoma in the developing world: The authors' experience
F.N. Chukwunke, O. Ajuzieogu, A. Chukwuka, T. Okwuowulu, P. Nnodi and C. Oji 150

Leading Research Paper

- A comparison between 2D and 3D cephalometry on CBCT scans of human skulls
O.J.C. van Vlijmen, T. Maal, S.J. Bergé, E.M. Bronkhorst, C. Katsaros and A.M. Kuijpers-Jagtman

156

Research and Emerging Technologies

- Octacalcium phosphate (OCP) collagen composites enhance bone healing in a dog tooth extraction socket model
S. Ilbuchi, K. Matsui, T. Kawai, K. Sasaki, O. Suzuki, S. Kamakura and S. Echigo 161
- Torque-fitting and resonance frequency analyses of implants in conventional sockets versus controlled bone defects *in vitro*
K. Akça, A.M. Kökat, A. Cömert, M. Akkocaoğlu, I. Tekdemir and M.C. Çehreli 169



The authors, editors, owners and publishers do not accept any responsibility for any loss or damage arising from actions or decisions based on information contained in this publication; ultimate responsibility for the treatment of patients and interpretation of published material lies with the medical practitioner. The opinions expressed are those of the authors and the inclusion in this publication of material relating to a particular product, method or technique does not amount to an endorsement of its value or quality, or of the claims made by its manufacturer.

Abstracted/Indexed by:

Biological Abstracts/BIOSIS, Current Contents: Clinical Medicine, EMBASE/Excerpta Medica, Index Medicus/MEDLINE, Medical Documentation Service, Research Alert, Science Citation Index, SciSearch

Continued over

Increased expression of Cathepsin B in oral squamous cell carcinoma X. Yang, K.-j. Wei, L. Zhang, H.-y. Pan, J. Li, W.-t. Chen, L.-p. Zhong and Z.-y. Zhang	174
---	-----

Technical Note

Novel use of an aerospace selective laser sintering machine for rapid prototyping of an orbital blowout fracture J.V. Williams and P.J. Revington	182
--	-----

Case Reports

A rare variation in the course of the inferior alveolar nerve R. Manikandhan, P.C. Mathew, J. Naveenkumar and P. Anantanarayanan	185
Large osteochondroma of the mandibular condyle treated by condylectomy using a transzygomatic approach V.V. Kumar	188
Unilateral facial nerve paralysis following an infected lower third molar M.A. Al-Muharraqi and E.C. O'Sullivan	192

Erratum

Erratum to "B-cell lymphoblastic lymphoma in the maxilla of a child: A rare case report" by A.S.R. Cavalcante, A.L. Anbinder, E.M. Pontes, Y.R. Carvalho [Int. J. Oral Maxillofac. Surg. 38(12) (2009) 1326-1330]	196
---	-----

Calendar

International News/IAOMS

The *International Journal of Oral and Maxillofacial Surgery* offers a rapid publication of six weeks from acceptance. Forthcoming articles, accepted for publication, can be accessed at <http://www.sciencedirect.com>

Table of Contents

- 68** **Survey of United States dental schools on cementation protocols for implant crown restorations**
Diane Yoshinobu Tarica, DDS, Veronica M. Alvarado, DDS, and Samantha T. Truong, DDS
- 80** **Three-year clinical evaluation of two ceramic crown systems: A preliminary study**
Maged K. Etman, DDS, MSc, MMedSc, PhD, and M. J. Woolford, BDS, PhD
- 91** **Effect of varying the vertical dimension of connectors of cantilever cross-arch fixed dental prostheses in patients with severely reduced osseous support: A three-dimensional finite element analysis**
Marianthi Manda, DDS, MSc, Christos Galanis, PhD, Vasilis Georgiopoulos, PhD, Christofer Provatidis, MSc, PhD, and Petros Koidis, DDS, MSc, PhD
- 101** **Comparison of cutting efficiencies between electric and air-turbine dental handpieces**
Charlson Choi, DDS, MS, Carl F. Driscoll, DMD, and Elaine Romberg, PhD
- 108** **Three-body wear of resin denture teeth with and without nanofillers**
Thomas Stober, DDS, Moritz Henninger, DDS, Marc Schmitter, PhD, DDS, Maria Pritsch, PhD, and Peter Rammelsberg, PhD, DDS
- 118** **Retrospective study of treatment outcomes with implant-retained extraoral prostheses: Survival rates and prosthetic complications**
Secil Karakoca, DDS, PhD, Cemal Aydin, DDS, PhD, Handan Yilmaz, DDS, PhD, and Bilge Turhan Bal, DDS, PhD
- 127** **Controlled airborne-particle abrasion of zirconia ceramic restorations**
Matthias Kern, DMD, PhD
- 129** **Chairside repair of worn or lost denture teeth using nanofilled composite resin bonded to the denture base**
Walter Renne, DMD
- 131** **News and Notes**

The Journal of Prosthetic Dentistry (ISSN 0022-3913) is published monthly by Elsevier, Inc, 360 Park Avenue South, New York, NY 10010-1710. Periodicals postage paid at New York, NY and additional mailing offices. Customer Service Office: 3251 Riverport Lane Maryland Heights, MO 63043. POSTMASTER: Send address changes to *The Journal of Prosthetic Dentistry*, Elsevier Health Sciences Division, Subscription Customer Service, 3251 Riverport Lane, Maryland Heights, MO 63043.

TABLE OF CONTENTS~



Table of Contents

- A17** News from the Editorial Council
- A18** Hickey Award Winners
- 133** Treatment of a severely atrophic maxilla using an immediately loaded, implant-supported fixed prosthesis without the use of bone grafts: A clinical report
Jeffrey S. Sherry, DDS, MSD, Thomas J. Balshi, DDS, Lawrence O. Sims, DDS, and Stephen F. Balshi, MBE
- 139** Shade matching performance of normal and color vision-deficient dental professionals with standard daylight and tungsten illuminants
Hasan Suat Gokce, DDS, PhD, Bulent Piskin, DDS, PhD, Dogan Ceyhan, MD, Sila Mermut Gokce, DDS, PhD, and Volkan Arisan, DDS, PhD
- 148** The effect of acidic agents on surface ion leaching and surface characteristics of dental porcelains
Boonlert Kukiattrakoon, DDS, MSc, Chanothai Hengtrakool, DDS, MSc, PhD, and Ureporn Kedjarune-Leggat, DDS, PhD
- 163** In vitro staining effects of stannous fluoride and sodium fluoride on ceramic material
Ioli Ioanna Artopoulou, DDS, MS, PhD, John M. Powers, PhD, Mark S. Chambers, DMD, MS
- 170** A pilot study to evaluate posttreatment cephalometric changes in subjects with OSA
Deeksha Arya, BDS, MDS, Arvind Tripathi, MDS, Saamyendra Vikram Singh, MDS, Suryakant Tripathi, MD, Amit Nagar, MDS, and Anupam Mishra, MD
- 178** Fracture incidence in mandibular overdentures retained by one or two implants
Tomoya Gonda, DDS, PhD, Yoshinobu Maeda, DDS, PhD, Joanne N. Walton, DDS, and Michael I. MacEntee, LDS, PhD
- 182** Regression methods to investigate the relationship between facial measurements and widths of the maxillary anterior teeth
Zakiah Mohd Isa, BDS, MSc, PhD, Omar Farouq Tawfiq, BDS, Norliza Mohd Noor, BSc, MEng, Mohd Iqbal Shamsudheen, BSc, and Omar Mohd Rijal, BSc, PhD
- 189** The use of polytetrafluoroethylene tape for the management of screw access channels in implant-supported prostheses
Osvaldo D. Moráquez, DMD, and Urs C. Belser, DMD, Prof Dr Med Dent

The Journal of Prosthetic Dentistry (ISSN 0022-3913) is published monthly by Elsevier, Inc, 360 Park Avenue, Suite 1000, New York, NY 10010-1710. Periodicals postage paid at New York, NY and additional mailing offices. Customer Service Office: 3251 Riverport Lane, Maryland Heights, MO 63043. POSTMASTER: Send address changes to *The Journal of Prosthetic Dentistry*, Elsevier Health Sciences Division, Subscription Customer Service, 3251 Riverport Lane, Maryland Heights, MO 63043.

192

News and Notes

Reader Service Information

A7

Information for Authors

A14

Information for Readers

A15

Change of Address

Full-text online access to *The Journal of Prosthetic Dentistry* is available for all print subscribers.
See page 181 for details.

Prosthodontic residents receive a subsidized subscription rate for *The Journal of Prosthetic Dentistry* through educational grants from NOBEL BIOCARE, THE EDITORIAL COUNCIL, AND ELSEVIER, INC.

NOTEWORTHY ABSTRACTS OF THE CURRENT LITERATURE

An abstract section is included in each issue of *The Journal of Prosthetic Dentistry* to provide our readers with supplemental information from the dental literature that is clinically relevant and timely. The abstracts are provided by Dr Stephen Rosenstiel. The abstracts will be placed randomly throughout the Journal, where space allows.

GERALD BARRACK, COVER ARTIST

Dr Gerald Barrack has been a dentist since 1959, graduating from the University of Pennsylvania School of Dental Medicine. Photography has been a serious hobby for over 50 years. His interest began when he was stationed in Okinawa with the US Navy Dental Corp. Traveling extensively throughout the Far East provided a great opportunity to learn how to see and think with a camera. Over the years, his primary interests became travel and nature photography. He has presented over 100 nature slide shows at various nature society meetings, photography clubs, libraries, and schools. He has also published 5 books, the latest of which is entitled "*Jungle of the Maya*," a celebration of the magnificent tropical forest that encompasses much of Belize, Guatemala, and the Yucatan Peninsula. His goal is to find a great location, study it, and wait for the "sweet light."



Cover Photograph

Autumn Reflections: Allendale Celery Farm Natural Area, Allendale, NJ. Protecting small local natural areas has become more and more important as urban life continues to expand.

Statements and opinions in the articles and communications herein are those of the author(s) and not necessarily those of the Editor(s), publisher, or The Editorial Council. The Editor(s), publisher, and The Editorial Council disclaim any responsibility or liability for such material and do not guarantee, warrant, or endorse any product or service advertised in this publication, nor do they guarantee any claim made by the manufacturer of such product or service.

TABLE OF CONTENTS

P 31

Ciencia y práctica

6 Cuando el implante inmediato no es posible y la regeneración ósea guiada se hace imprescindible

DR. NORBERTO MANZANARES MAYANDÍA
DR. ARMANDO BADET DE MENA
DR. JOSE M^a ARANO



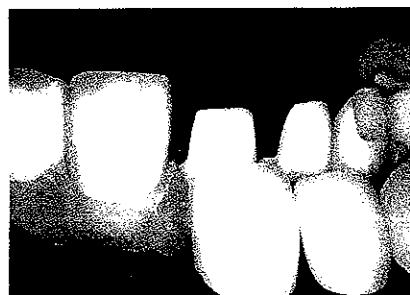
14 Reflexiones sobre el cierre de diastemas. A propósito de un caso, usando Venus Diamond + Durafill

FERNANDO AUTRÁN MATEU



20 Una opción para el tratamiento de maxilar edéntulo utilizando tecnología de fresado manual de zirconia, a propósito de un caso

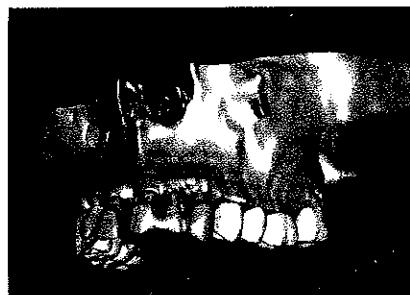
DR. ROGELIO ESPINOSA ARREDONDO
DR. SHIME TOIBER SEREBNIKY



Formación continuada

32 Planificación informatizada y carga inmediata en el marco de rehabilitaciones completas de la arcada superior. Primera parte

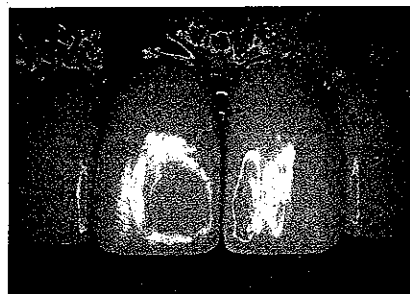
DR. FRANÇOIS BOUILLARD



Casos clínicos

42 Carga diferida vs carga inmediata

DR. JOSÉ M^a ARANO SESMA
DR. ESTEBAN PADULLÉS I ROIG



Actualidad

56

Oral Surgery, Oral Medicine, Oral Pathology, Oral Radiology, and Endodontology

CONTENTS

EDITORIAL

- Pragmatics versus contrarians: how does one resolve their differences with respect to oral cancer screening?** Mark W. Lingen, DDS, PhD, Section Editor, Oral Pathology 325

LETTERS TO THE EDITOR

- The wrong emperor.** Ken M. Hargreaves, DDS, PhD, San Antonio, TX; and Minneapolis, MN 327

- Reply.** Larz Spångberg, DDS, PhD, Editor, Endodontology section 328

- Presence of oral lesions in leprosy patients does not imply involvement by *Mycobacterium leprae*.** Marilda Aparecida Milanez Morgado de Abreu, MD, MS, Dalva Regina Neto Pimentel, MD, PhD, Náfra Milanez Morgado de Abreu, MS-III, Cleonice Hitomi Watashi Hirata, MD, PhD, Nilceo Schwery Michalany, MD, MS, Luc Louis Maurice Weckx, MD, PhD, Maurício Mota de Avelar Alchome, MD, PhD, Federal University of São Paulo, São Paulo, Brazil 328

CLINICOPATHOLOGIC CONFERENCE

- Rapidly progressing mass of anterior mandible following a dental extraction.** A. Fasanmade, BDS, MBBS, FDSRCS, MRCS, FRCS, M. Pring, BDS, FDSRCS, FRCPath, J. Pawade, MBBS, FRCPath, P. Guest, BDS, MBBS, FDSRCS, FRCS, and C. Bell, BDS, MSc, FDSRCS, Bristol, United Kingdom 330

ORAL AND MAXILLOFACIAL SURGERY

- Risk factors associated with injury to the inferior alveolar and lingual nerves following third molar surgery—revisited.** Waseem Jerjes, MSc (OMFS), PhD (Surg), Tahwinder Upile, FRCS, Priya Shah, MFDS, Farai Nhembe, MFDS, Dipali Gudka, MFDS, Panagiotis Kafas, MSc (OMFS), Eileen McCarthy, MFDS, Syedda Abbas, FDS, MRCS, Shinali Patel, MFDS, Zaid Hamdoon, MSc (OMFS), Jesuloba Abiola, BSc, Michael Vourvachis, MSc (OMFS), MFDS, Maria Kalkani, MFDS, Mohammed Al-Khawalde, MSc (OMFS), Rachael Leeson, MSc, PhD, FDS, Bilquis Banu, MSc, FDS, Jubli Rob, BSc, Mohammed El-Maaytah, MSc, PhD, FDS, and Colin Hopper, MD, FDSRCS, FRCS, London and Winchester, UK; Thessaloniki, Greece; and Amman, Jordan 335

Oral Surgery, Oral Medicine, Oral Pathology, Oral Radiology, and Endodontology (ISSN: 1079-2104) is published monthly by Elsevier Inc., 360 Park Avenue South, New York, NY 10010-1710. Business Office: 1600 John F. Kennedy Blvd., Suite 1800, Philadelphia, PA 19103-2899. Editorial Office: 3251 Riverport Lane, Maryland Heights, MO 63043. Customer Service (orders, claims, online, change of address): Elsevier Health Sciences Division, Subscription Customer Service, 3251 Riverport Lane, Maryland Heights, MO 63043. Periodicals postage paid at New York, NY and additional mailing offices.

POSTMASTER: Send address changes to *Oral Surgery, Oral Medicine, Oral Pathology, Oral Radiology, and Endodontology*, Elsevier Health Sciences Division, Subscription Customer Service, 3251 Riverport Lane, Maryland Heights, MO 63043.

- A comparison of stresses in implantation for grafted and plate-and-screw mandible reconstruction.** Tomohisa Nagasao, MD, PhD, Junpei Miyamoto, MD, Tamotsu Tamaki, PhD, and Hiromasa Kawana, DDS, PhD, Tokyo, Japan 346
- Scar less: a review of methods of scar reduction at sites of peripheral nerve repair.** Wei Cheong Ngeow, BDS (Mal), FFDRCS (Ireland), FDSRCS (Eng), MSc (Mal), Kuala Lumpur, Malaysia 357
- Abdominal fat harvest technique and its uses in maxillofacial surgery.** Dennis J. Kantanen, DDS, James J. Clossmann, DDS, and Henry H. Rowshan, DDS, Honolulu, Hawaii 367
- Oral and Maxillofacial Implants**
- Bone healing with an in situ-formed, bioresorbable polyethylene glycol hydrogel membrane in rabbit calvarial defects.** Craig C. Humber, DMD, MSc, G. K. B. Sándor, MD, DDS, PhD, FRCDC, FRCSC, FACS, Joel M. Davis, DDS, BSc, Sean A. F. Peel, PhD, Bozidar M. B. Brkovic, DDS, PhD, Yong Deok Kim, DDS, PhD, Howard I. Holmes, DDS, and Cameron M. L. Clokie, DDS, PhD, FRCD, Toronto, Canada; Oulu and Tampere, Finland; Busan, South Korea; Hillside, New York; and Belgrade, Serbia 372
- Online Only Articles**
- Auricular cartilage grafting in arthroplasty of the temporomandibular joint: a retrospective clinical follow-up.** Börje Svensson, DDS, PhD, Karin Wennerblom, DDS, and Ragnar Adell, DDS, PhD, Örebro, Sweden E1
- Reconstruction of maxillectomy defects using deep circumflex iliac artery-based composite free flap.** Amresh S. Baliarsing, MS, MCh, Vinay V. Kumar, MDS, Neelima A. Malik, MDS, and Dilip Kumar B., MDS, Mumbai, India E8
- Sinus bone graft using new alloplastic bone graft material (Osteon)—II: clinical evaluation.** Ji-Hyun Bae, DDS, PhD, Young-Kyun Kim, DDS, PhD, Su-Gwan Kim, DDS, PhD, Pil-Young Yun, DDS, PhD, and Jae-Seung Kim, DDS, PhD, Seongnam, Gwangju, and Seoul, Korea E14
- A biomechanical analysis of titanium miniplates used for treatment of mandibular symphyseal fractures with the finite element method.** Baohui Ji, Chun Wang, Lei Liu, PhD, MD, Jie Long, PhD, MD, Weidong Tian, PhD, MD, and Hang Wang, PhD, MD, Chengdu, PR China E21
- Severe dental malocclusion: a rare and insidious complication of mandibular advancement devices for obstructive sleep apnea syndrome treatment.** Max Hugentobler, MD, DMD, and Paolo Scolozzi, MD, DMD, SERVICE OF ORAL AND MAXILLOFACIAL SURGERY, DEPARTMENT OF SURGERY, HÔPITAUX UNIVERSITAIRE DE GENÈVE E28
- Neurogenic temporomandibular joint dislocation treated with botulinum toxin: report of 4 cases.** Olga Vázquez Bouso, MD, Gabriel Forteza González, MD, PhD, Jens Mommsen, MD, DDS, Víctor Gumbao Grau, MD, Javier Rodríguez Fernández, MD, and Mario Mateos Micas, MD, Tarragona, Spain E33

Effect of low-level laser therapy (GaAlAs) on bone regeneration in midpalatal anterior suture after surgically assisted rapid maxillary expansion. Pierangelo Angeletti, DDS, PhD, Max Domingues Pereira, MD, PhD, Heitor Carvalho Gomes, MD, PhD, Claudia Toyama Hino, DDS, PhD, and Lydia Masako Ferreira, MD, PhD, São Paulo, Brazil

E38

ORAL MEDICINE

Jaw bone changes in rats after treatment with zoledronate and pamidronate. Figen Cizmeci Senel, DDS, PhD, Mine Kadioglu Duman, MD, Efnan Muci, MD, Mustafa Cankaya, DDS, A. Alper Pampu, DDS, PhD, Safak Ersoz, MD, and Omer Gunhan, DDS, PhD, Trabzon and Ankara, Turkey

385

Susceptibility of *Candida albicans* to photodynamic therapy in a murine model of oral candidosis. Ewerton Garcia de Oliveira Mima, DDS, MSc, PhD, Ana Cláudia Pavarina, DDS, MSc, PhD, Lívia Nordi Dovigo, DDS, MSc, Carlos Eduardo Vergani, DDS, MSc, PhD, Carlos Alberto de Souza Costa, DDS, MSc, PhD, Cristina Kurachi, DDS, MSc, PhD, and Vanderlei Salvador Bagnato, MSc, PhD, São Paulo, Brazil

392

Pilot study on recurrent aphthous stomatitis (RAS): a randomized placebo-controlled trial for the comparative therapeutic effects of systemic prednisone and systemic montelukast in subjects unresponsive to topical therapy.

F. Femiano, MD, PhD, C. Buonaiuto, MD, F. Gombos, MD, A. Lanza, DDS, and N. Cirillo, DDS, Naples, Italy

402

Seroprevalence of anti-HCV among patients with oral lichen planus in Southern Taiwan. Liang-Ho Lin, DDS, Shin-Yu Lu, DDS, and Sheng-Nan Lu, MD, MPH, PhD, Kaohsiung, Taiwan (R.O.C.)

408

Online Only Articles

Injection of botulinum toxin type A (BOTOX) into trigger zone of trigeminal neuralgia as a means to control pain. Wei Cheong Ngeow, BDS (Mal), FFDRSC (Ireland), FDSRCS (Eng), MDSc (Mal), and Rekha Nair, MBBS (India), DRM (Mal), LFOMRCPI (Ireland)

E47

Association between metabolic control and oral health in adolescents with type 1 diabetes mellitus. Ivana Maria Saes Busato, Mônica Sommer Bittencourt, Maria Ângela Naval Machado, Ana Maria Trindade Grégio, Luciana Reis Azevedo-Alanis, Curitiba, Brazil

E51

Tumor-induced osteomalacia associated with a maxillofacial tumor producing fibroblast growth factor 23: report of a case and review of the literature. Yoshiyuki Mori, DDS, PhD, Toru Ogasawara, DDS, PhD, Toru Motoi, MD, PhD, Yuichiro Shimizu, MD, PhD, Daichi Chikazu, DDS, PhD, Kazumi Tamura, BA, Seiji Fukumoto, MD, PhD, and Tsuyoshi Takato, MD, PhD, Tokyo, Japan

E57

Successful treatment of periodontal mucormycosis: report of a case and literature review. Nancy E. McDermott, DMD, MD, John Barrett, MD, Jason Hipp, MD, PhD, Maria J. Merino, MD, Chyi-Chia Richard Lee, MD, PhD, Paige Waterman, MD, Demetrio L. Domingo, DDS, MS, and Thomas J. Walsh, MD, Bethesda, Maryland

E64

OOOOE March 2010 3A

Oral myiasis caused by *Cochliomyia hominivorax* treated nonsurgically with nitrofurazone: report of 2 cases. Sergio Monteiro Lima Júnior, DDS, Luciana Asprino, DDS, MS, PhD, Angelo Pedro Prado, MS, PhD, Roger Willian Fernandes Moreira, DDS, MS, PhD, Márcio de Moraes, DDS, MS, PhD, Piracicaba, SP, Brazil

E70

ORAL AND MAXILLOFACIAL PATHOLOGY

Parathyroid hormone-related peptide (PTHrP), parathyroid hormone/parathyroid hormone-related peptide receptor 1 (PTHr1), and MSX1 protein are expressed in central and peripheral giant cell granulomas of the jaws. Constantinos H. Houpis, DDS, MSc, PhD, Konstantinos I. Tosios, DDS, PhD, Dimitrios Papavasileiou, DDS, Panagiotis G. Christopoulos, DDS, PhD, Ioannis G. Koutlas, DDS, MSc, Alexandra Sklavounou, DDS, MSc, PhD, and Constantinos Alexandridis, DDS, MSc, PhD, Athens, Greece; and Minneapolis, Minnesota

415

Immunohistochemical expression of E-cadherin and β -catenin in ameloblastomas and tooth germs. Karuza Maria Alves Pereira, DDS, MSc, Bruna Aguiar do Amaral, DDS, MSc, Bruna Rafaela Martins dos Santos, DDS, MSc, Hébel Cavalcanti Galvão, DDS, PhD, Roseana de Almeida Freitas, DDS, PhD, and Lélia Batista de Souza, DDS, PhD, Natal, Brazil

425

Clinical analysis of Castleman disease (hyaline vascular type) in parotid and neck region. Lai-ping Zhong, MD, PhD, Li-zhen Wang, MD, Tong Ji, MD, PhD, Yu-hua Hu, MD, Yong-jie Hu, MD, Wei-min Ye, MD, Jun Li, MD, Jian Sun, MD, PhD, Han-guang Zhu, MD, Jiang Li, MD, and Chen-ping Zhang, MD, PhD, Shanghai, China

432

Online Only Articles

Distinctive clinical and microscopic features of squamous cell carcinoma of oral cavity and lip. Aline Carvalho Batista, DDS, MS, PhD, Nádia Lago Costa, DDS, MS, Angélica Ferreira Oton-Leite, DDS, MS, Elismauro Francisco Mendonça, DDS, MS, PhD, Rita de Cássia Gonçalves Alencar, MD, MS, and Terefília Aparecida Silva, DDS, MS, PhD, Goiânia and Belo Horizonte, Brazil

E74

ORAL AND MAXILLOFACIAL RADIOLOGY

Clinical and radiologic findings of synovial chondromatosis affecting the temporomandibular joint. Juanhong Meng, DDS, PhD, Chuanbin Guo, DDS, PhD, Biao Yi, DDS, PhD, Yanping Zhao, DDS, PhD, Haiyan Luo, MD, and Xuchen Ma, DDS, PhD, Beijing, China

441

Correlations between seven panoramic radiomorphometric indices and bone mineral density in postmenopausal women. André Ferreira Leite, DDS, MSc, Paulo Tadeu de Souza Figueiredo, DDS, MSc, Cláudio Mares Gula, MD, Nilce Santos Melo, DDS, MSc, PhD, and Ana Patrícia de Paula, MD, PhD, Brasilia, Brazil

449

An evaluation of microbiologic contamination on a phosphor plate system: is weekly gas sterilization enough? Sajitha Kalathingal, BDS, MS, Allison Youngpeter, Jason Minton, Michael Shrout, DMD, Douglas Dickinson, PhD, Kevin Plummer, DMD, and Stephen Looney, PhD, Augusta, Georgia

457

Diagnostic accuracy of proximal caries by digital radiographs: an in vivo and in vitro comparative study. Gang Li, DDS, PhD, Xin-min Qu, DDS, Yan Chen, DDS, MSc, Jie Zhang, DDS, PhD, Zu-yan Zhang, DDS, PhD, and Xu-chen Ma, DDS, PhD, Beijing, China

463

Online Only Articles

Prevalence of mucosal abnormalities of the maxillary sinus and their relationship to dental disease in panoramic radiography: results from the Health 2000 Health Examination Survey. Jaana Vallo, DDS, Liisa Suominen-Taipale, DDS, PhD, Sisko Huuonen, DDS, PhD, Kari Soikkonen, DDS, PhD, and Anne Norblad, DDS, PhD, Helsinki, Kuopio, and Turku, Finland; and Tromso, Norway

E80

Computed tomography findings in radiation-induced osteosarcoma of the jaws. Ziyang Shao, PhD, MD, Yu He, PhD, MD, Lizhen Wang, MD, Haisheng Hu, MD, and Huimin Shi, MD, Shanghai, China

E88

The metaplastic variant of Warthin tumor of the parotid gland: dynamic multislice computerized tomography and magnetic resonance imaging findings with histopathologic correlation in a case. Hasan Yerli, MD, Suat Avci, MD, Erdinc Aydin, MD, and Ünser Arıkan, MD, Izmir, Turkey

E95

A case of malignant fibrous histiocytoma of the maxillary sinus. Yoshinobu Yanagi, DDS, Jun Murakami, DDS, PhD, Miki Hisatomi, DDS, PhD, Naoki Katase, DDS, PhD, Hitoshi Nagatsuka, DDS, PhD, and Jun-ichi Asaumi, DDS, DMSc, Okayama, Japan

E99

ENDODONTOLOGY

Efficacy of combining a buccal infiltration with an inferior alveolar nerve block for mandibular molars with irreversible pulpitis. Masoud Parirokh, DMD, MS, Seyed Amir Satvati, DDS, Rohollah Sharifi, DDS, Ali Reza Rekabi, DDS, Hedayat Gorjestani, DMD, MS, Nozar Nakhaee, MD, and Paul V. Abbott, DDS, MSc, Kerman, Iran; and Perth, Australia

468

Distribution of *Porphyromonas gingivalis fimA* genotypes in primary endodontic infections. Isabela N. Rôças, PhD, and José F. Siqueira, Jr., PhD, Rio de Janeiro Brazil

474

Comparison of the cleaning efficacy of a new apical negative pressure irrigating system with conventional irrigation needles in the root canals. Su-Jung Shin, DDS, MS, Hee-Kyoung Kim, DDS, MSD, Il-Young Jung, DDS, MSD, PhD, Chan-Young Lee, DDS, MSD, PhD, Seung-Jong Lee, DDS, MSD, PhD, and Euisong Kim, DDS, MSD, PhD, Seoul, South Korea

479

Online Only Articles

Comparative evaluation of rotary ProTaper, Profile, and conventional stepback technique on reduction in *Enterococcus faecalis* colony-forming units and vertical root fracture resistance of root canals. Mamta Singla, MDS, Vivek Aggarwal, MDS, Ajay Logani, MDS, and Naseem Shah, MDS, New Delhi, India

E105

An improved model of 3-dimensional finite element analysis of mechanical behavior of endodontic instruments. Valérie Chevalier, DDS, Reza Arbab-Chirani, DDS, PhD, Shabnam Arbab-Chirani, PhD, and Sylvain Calloch, PR, Brest, France

E111

- Cytotoxicity evaluation of endosequence root repair material.** Amer Z. AlAnezi, DDS, MDS, Jin Jiang, DDS, PhD, Kamran E. Safavi, DMD, MEd, Larz S. W. Spangberg, DDS, PhD, and Qiang Zhu, DDS, PhD, Farmington, Connecticut **E122**
- A comparative evaluation of postobturation apical seal following intracanal irrigation with maleic acid and EDTA: a dye leakage under vacuum study.** Nidambur Vasudev Ballal, MDS, Mala Kundabala, MDS, and Kadengodlu Seetharama Bhat, MDS, Karnataka, India **E126**
- Comparison of cyclic fatigue resistance of used and new RaCe instruments.** Cumhur Aydin, DDS, PhD, Ugur Inan, DDS, PhD, and Yasar M. Tunca, DDS, PhD, Ankara and Samsun, Turkey **E131**
- Mineral trioxide aggregate stimulates macrophages and mast cells to release neutrophil chemotactic factors: role of IL-1 β , MIP-2 and LTB $_4$.** Alessandra Cristina Gomes, DMD, João Eduardo Gomes-Filho, PhD, and Sandra Helena Penha Oliveira, PhD, Araçatuba, SP, Brazil **E135**
-

READER SERVICES

Information for Readers

9A

AUTHOR INSTRUCTIONS

Instructions for authors are available on the journal's website at <http://journals.elsevierhealth.com/periodicals/ymoe>

Table of Contents



Member Publication
AADE
 American Association
 of Dental Editors

Pediatric Dentistry

Position Paper

- 21 American Academy of Pediatric Dentistry Analysis and Policy Recommendations Concerning Mid-level Dental Providers

Scientific Articles



- 9 Antibacterial Properties of Pit and Fissure Sealants Combined With Daily Fluoride Mouth Rinse
Shlomo Matalon, Benjamin Peretz, Reut Sidon, Ervin I. Weiss, Hagay Slutzky



- 14 Determination of the Optimum Time for Surgical Removal of Unerupted Anterior Supernumerary Teeth
Rashied S. M. Omer, Robert P. Anthonappa, Nigel M. King

- 27 Socio-Ecological Factors Associated with Returning for Post-Operative Care after Dental Treatment under General Anesthesia
Kavita R. Mathu-Muju, Heather M. Bush, Lindsey A. Ho, Shelley Golden, Michael W. Roberts, Timothy J. Wright

- 35 Effect of Milk and Soy-based Infant Formulas on In Situ Demineralization of Human Primary Enamel
Anna Maria Cia de Mazer Papa, Cláudia Pereira Machado Tabchoury, Altair Antoninha Del Bel Cury, Livia Maria Ardaló Tenuta, Rodrigo Alex Arthur, Jaíne Aparecida Cury



- 41 Mineral Trioxide Aggregate Produces Superior Outcomes in Vital Primary Molar Pulpotomy
Tracy L. Doyle, Michael J. Casas, David J. Kenny, Peter L. Judd

- 48 Behavioral Determinants of Brushing Young Children's Teeth: Implications for Anticipatory Guidance
Colleen E. Huebner, Christine A. Riedy

Clinical Articles

- 56 Amelogenesis Imperfecta Due to a Mutation of the Enamelin Gene: Clinical Case With Genotype-phenotype Correlations
Rochelle G. Lindemeyer, Carolyn W. Gibson, Timothy J. Wright

- 61 A Single Appliance for the Correction of Digit-sucking, Tongue-thrust, and Posterior Crossbite
Gajanan V. Kulkarni, D. Lau

- 64 Rubber Dam Use: A Survey of Pediatric Dentistry Training Programs and Private Practitioners
David Slawinski, Stephen Wilson

- 69 Caries-risk Assessment and Caries Status of Children with Autism
Jennifer Marshall, Barbara Sheller, Lloyd Mancl

Abstracts

8, 60, 63

- 7 Letter to the Editor: Local anesthesia during dental rehabs, "To use, or not to use: that (still) is the question." Howard L. Needleman

8 Erratum

76 Opportunities

PERIODONCIA Y OSTEOINTEGRACIÓN

Vol 20 Núm 4 (2010)

EDITORIAL 5



7 *Cambio de plataforma ("platform switch") en implantología. Una revisión bibliográfica*

Francisco Javier Fernández Delgado, Antonio Roa, Luís Téllez, Juan José Gijón, Maximino González, Gerardo Moreu



15 *Colocación de un implante en "posición óptima" en una cresta ósea reabsorbida con regeneración ósea guiada simultánea usando membrana reabsorbible y hueso autógeno*

David González, Dino Calzavara, Gustavo Cabello



23 *Melanosis gingival y el láser Er:YAG como alternativa válida de tratamiento*

Ignacio Arregui, Pedro Buitrago



31 *Parámetros estéticos, quirúrgicos y restauradores del alargamiento coronario*

Jesús Oteo, Jorge Serrano, Alvaro Oteo, Carlos Oteo



39 *Influencia del grosor del tejido blando en los cambios en el hueso crestal alrededor de los implantes: un estudio clínico controlado y prospectivo (1 año)*

Tomas Linkevicius, Peteris Apse, Simonas Grybauskas, Algirdas Puisys



49 *Aumento vertical de la cresta, previo a la colocación de implantes, mediante Regeneración Ósea Guiada (ROG) en tres escenarios clínicos*

Istvan A. Urban, Sascha A. Jovanovic, Jaime L. Lozada



59 *Tratamiento de las recesiones gingivales mediante injertos de tejido conectivo: una revisión sistemática*

Alicia Santos, José J. Echeverría

Normas de publicación 70

DIRECTOR
Dr. Esteban Padullés Roig
EDITOR INTERNACIONAL
Dr. René Horvilleur



Sociedad Española de Implantes

Junta Directiva SEI

PRESIDENTE

Dra. Araceli Morales Sánchez

VICEPRESIDENTE

Dr. Juan Carlos Asurmendi Zulueta

SECRETARIO GENERAL

Dr. Antonio Bowen Antolin

TESORERO

Dr. Pedro Fernández-Palacios Ruiz

VOCALES

Dr. Luis M^a Iizarbe Querol

Dr. Ignacio Corral Pazos de Provens

Dra. Inmaculada Gonzalez-Morán

Dr. Rafael Carroquino Cañas

Dr. Armando Bader de Mena

Dr. Fidel San Román Ascaso

RESPONSABLE DE COMUNICACIÓN

Patricia de Lorenzo

patricia.delorenzo@sei-net.net

SECRETARIA TÉCNICA

Sra. Paloma Fernández Gil

paloma.fernandez@sei-net.net

Oficinas y redacción

Oranse 51, bajo C. 28020 Madrid

Tel: 915 550 950 - Fax: 915 972 871

info@sei-net.net - www.sei-net.net

Edita

Nexus Médica Editores

Avda. Maresme, 44-46

06918 Badalona (Barcelona)

Tel: 935 510 260 / Fax: 932 136 672

nexus@nexusmedica.com - www.nexusmedica.com

Imprime: Trajecte, S.A.

Depósito Legal: B-16837-1993

ISSN: 1133-1615

SV: 93025R

Indexada en Índice Médico-Español

Nota del editor

Las opiniones expresadas en la Revista Española Odonto-estomatológica de Implantes son exclusivas de los firmantes de los artículos y nunca podrán ser atribuibles a los anunciantes, al editor o al comité de dicha publicación.

Publicación no sujeta a control obligatorio de difusión

Cualquier forma de reproducción, distribución, comunicación pública o transformación de esta obra solo puede ser realizada con la autorización de sus titulares, salvo excepción prevista por la ley. Diríjase a CEDRO (Centro Español de Derechos Reservados) www.cedro.org para cualquier fotocopia o escaneo a algún fragmento de esta obra.

EDITORIAL 5

CASOS CLÍNICOS

La elevación del seno maxilar con hueso bovino mineralizado. Caso clínico..... 6

La experiencia clínica con implantes dentales con nanosuperficie.
Un estudio prospectivo a los 18 meses..... 14

Implante inmediato post-extracción de un incisivo central superior.
Incisión mucogingival. Fijación de la prótesis con cemento provisional
y pasador 21

CRÓNICA DE ACTOS 27

ACTUALIDAD 29

AGENDA SEI 33

AGENDA 40

NORMAS DE PUBLICACIÓN 42