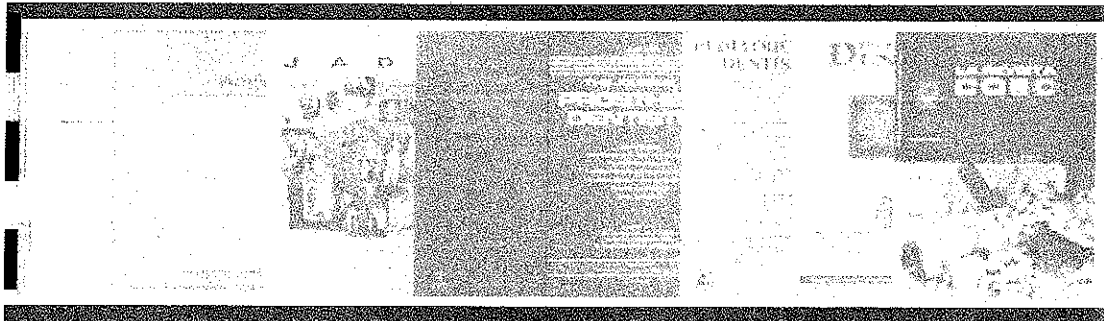


BUTLLETI DE SUMARIS

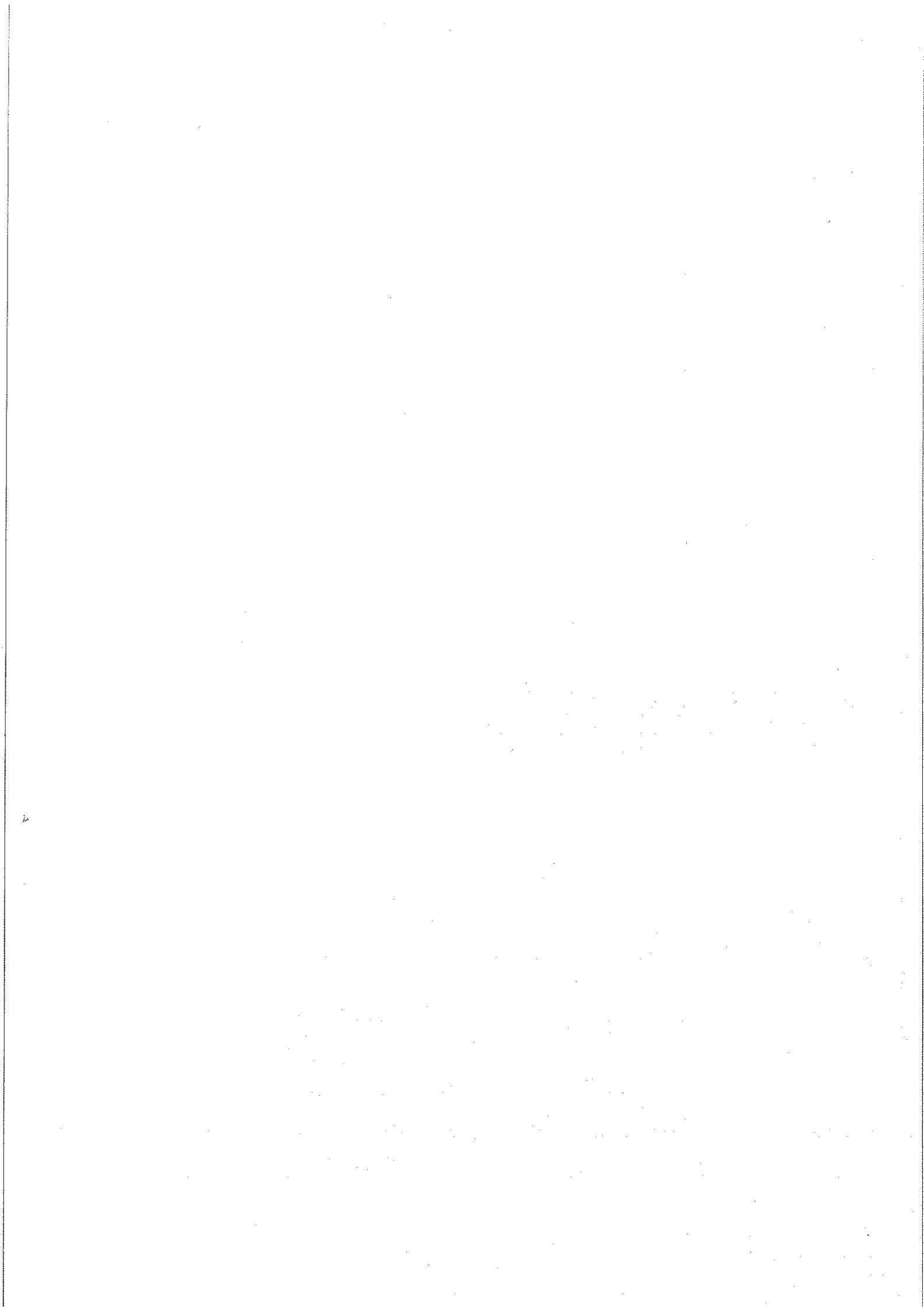
Maig 2010



COL·LEGI OFICIAL D'ODONTÒLEGS I ESTOMATÒLEGS DE CATALUNYA
BIBLIOTECA.

TRAVESSERA DE GRÀCIA, 93-95 08006 BARCELONA TL. 93 3101555 FAX 93 3101554

e-mail: mnadal@coec.net



PRESENTACIÓ

El propòsit principal d'un Butlletí de Sumaris és la màxima difusió de la informació actualitzada que proporcionen les publicacions periòdiques. El Butlletí de Sumaris del COEC aplega, mensualment, els sumaris de les revistes d' Odontostomatologia i de matèries afins que es reben a la Biblioteca.

En cada número es dona la relació dels títols d' aquestes revistes a continuació de la presentació. Els sumaris estan ordenats, al Butlletí, alfabèticament pel títol, essent també accessibles per la matèria general de la revista mitjançant l'Index de Matèries del Butlletí.

Aquesta eina bibliogràfica permet aproximar el perfil d'interès del lector al contingut de les principals publicacions periòdiques d'Odontostomatologia, sense necessitat d'estar-hi subscrit. Totes les revistes relacionades es troben a la Biblioteca, de manera que l'usuari pot demanar , si li interessa, còpia de qualsevol dels articles citats.

REVISTES INCLOSES EN AQUEST BUTLLETÍ

- Acta odontologica Scandinavica
- American Jnl. of Orthodontics & Dentofacial Orthopedics
- Angle Orthodontist
- Avances en Odontoestomatología
- British Dental Journal
- Clinica
- Clinical Oral Implant Research
- Dental Abstracts
- Dental Economics
- Dental Materials
- Endodoncia
- Gaceta dental
- International Journal of Oral and Maxillofacial Implants
- International Journal of Oral and Maxillofacial Surgery
- Journal of the History Dentistry
- Journal of Prosthetic Dentistry
- Pediatric Dentistry
- Profesión dental
- Revista Española de Ortodoncia
- Revista Internacional de Odontología Restauradora & Periodoncia
- Revista Internacional de Prótesis Estomatológica
- Revista Odontologica Granadina

MATERIA	TITOL DE LA REVISTA	pag
BIBLIOGRAFIA DENTAL	Dental Abstracts Vol.55 Núm.2 (març-abril 2010)	20
CIRURGIA ORAL	Intern. Jnl. Oral & Maxil.Surgery Vol.39 Núm.4 (abril 10)	28
COL.LEGIS PROFESSION.	Profesión Dental Vol.13 Núm.5 (maig 10)	34
	Revista Odontológica Granadina. Vol.11 Núm.1 (2010)	38
ECONOMIA DENTAL	Dental Economics. Vol.16 Núm.2 (març-abril 2010)	22
ENDODONCIA	Endodoncia. Vol.28 Núm.1 (gener-març 2010)	24
HISTÒRIA	Journal of the History of Dentistry Vol.58 Núm.1 (2010)	32
IMPLANTS DENTALS	Clinical Oral Implant Research. Vol.21 Núm.6 (juny 2010)	19
	JOMI Vol.25 Núm.1 (2010)	26
MATERIALS DENTALS	Dental materials. Vol.26 Núm.6 (juny 2010)	23
ODONTOSTOMATOLOGIA	Acta Odontol. Scandinavica. Vol.68 Núm.3 (maig 2010)	1
	Avances en Odontoestomatol. Vol.26 Núm.2 (març-abril 2010)	7
	British Dent. Jnl. Vol.208 Núm.7,8,9 (abril, maig 10)	8
	Clinica. Vol. 6 Núm.2 (abril/juny 2010)	17
	Gaceta Dental Núm.214 (abril 2010)	25
ODONT. CONSERVADORA	Rev. Int. Odont. Restaurad. & Period. Vol.14 Núm.1 (10)	36
ODONT. PEDIÀTRICA	Pediatric Dentistry. Vol.32 Núm.2 (març-abril 2010)	33
ORTODÒNCIA	American Jnl. of Orthod. Vol.137 Núm.5 (maig 2010)	3
	Angle Orthodontist Vol.80 Núm.3 (maig 10)	5
	Revista Española de Ortodoncia Vol.40 Núm.1 (2010)	35
PERIODÒNCIA	Rev. Int. Odont. Restaurad. & Period. Vol.14 Núm.1 (10)	36
PRÒTESI DENTAL	Journal of Prosthetic Dentistry Vol.103 Núm.4,5 (abril, maig 2010)	30
	Rev. Int. Prótesis Estomatol. Vol. 12 Núm.1 (2010)	37

ACTA ODONTOLOGICA SCANDINAVICA

CONTENTS

VOLUME 68

OBITUARY

129

ORIGINAL ARTICLES

Association between mandibular asymmetry and occlusal asymmetry in young adult males with class III malocclusion

131

Christine Bettina Staudt & Stavros Kiliaridis

Do psychological factors and general health influence the short-term efficacy of resilient appliance therapy in patients with temporomandibular disorder pain?

141

Håkan Nilsson & Ewacarin Ekberg

DIAGNOdent measurements of cultures of selected oral bacteria and demineralized enamel

148

Álfheiður Ástvaldsdóttir, Sofia Tranæus, Lena Karlsson & W. Peter Holbrook

Bonding between titanium and dental porcelain: A systematic review

154

Per Haag & Krister Nilner

Periodontitis in psoriasis patients. A blinded, case-controlled study

165

Hans R. Preus, Pejman Khanifam, Kristin Kolltveit, Cato Mørk & Per Gjermo

(Continued on Back Cover)

NUMBER 3

MAY 2010

informa
healthcare

ACTA ODONTOLOGICA SCANDINAVICA

CONTENTS *(Continued)*

**Bond strength of a self-adhesive resinous cement to
root dentin irradiated with a 980-nm diode laser 171**

Lućas Da Fonseca Roberti Garcia, Lucas Zago Naves,
Lourenço Correr-Sobrinho, Simonides Consani &
Fernanda De Carvalho Panzeri Pires-De-Souza

**Tin and fluoride as anti-erosive agents in enamel
and dentine in vitro 180**

Nadiñe Schlueter, Lina Neutard, Judith Von Hinckeldey,
Joachim Klimek & Carolina Ganss

informa
healthcare

Editorial

Study clubs share their secrets of success , D. L. Turpin P. 573-574

Special Article

Banking cases for the American Board of Orthodontics' Initial Certification Examination P. M. Greco, (et al.) P. 575-576

Guest Editorial

The need to establish an on-line cleft palate teaching program for orthodontic residents and practicing orthodontists S.I Berkowitz page 577

Editor's comment

D.L. Turpin page 578

Readers' Forum

Anaphylaxis risk associated with antibiotic prophylaxis A. H. Friedlander page 579

Author's response L. Jerrold page 579

Online Only

Distances between facial landmarks can be measured accurately with a new digital 3-dimensional video system M. Schimmel, (et al.) P. 580.e1-580.e10

Editor's Comment and Q&A: Distances between facial landmarks can be measured accurately with a new digital 3-dimensional video system Martin Schimmel, (et al.) P. 580-581

Demineralization properties of newly erupted and mature premolars around orthodontic brackets: An in-vivo study T. Uysal, (et al.) P. 582.e1-582.e6

Editor's Comment and Q&A: Demineralization properties of newly erupted and mature premolars around orthodontic brackets: An in-vivo study T. Uysal, (et al.) P. 582-583

Patterns of tooth agenesis in patients with Down syndrome in relation to hypothyroidism and congenital heart disease: An aid for treatment planning Wimke Reuland-Bosma, (et al.) P. 584.e1-584.e9

Noncompliance maxillary molar distalization with the First Class Appliance: A randomized controlled trial M. A. Papadopoulos, (et al.)P. 586.e1-586.e13

Factors affecting the long-term stability of orthodontic mini-implants M. Motoyoshi, (et al.) P. 588.e1-588.e5

Original Articles

Comparative analysis of traditional radiographs and cone-beam computed tomography volumetric images in the diagnosis and treatment planning of maxillary impacted canines E. Haney, (et al.) P. 590-597

Intraexaminer and interexaminer reliabilities of landmark identification on digitized lateral cephalograms and formatted 3-dimensional cone-beam computerized tomography images M.O. Lagravère, (et al.) P. 598-604

Relapse of anterior open bites treated with orthodontic appliances with and without orofacial myofunctional therapy JoAnn Smithpeter, (et al.) P. 605-614

Systematic Review

In-vitro orthodontic bond strength testing: A systematic review and meta-analysis K. J. Finnema, (et al.) P. 615-622.e3

Original Articles

Motivational factors and future life plans of orthodontic residents in the United States J. Noble, (et al.) P. 623-630

Agreement between mothers and children with malocclusion in rating children's oral health-related quality of life P. Benson, (et al.) P. 631-638

Optimum conditions for parallel translation of maxillary anterior teeth under retraction force determined with the finite element method T. Kim, (et al.) P. 639-647

Effective en-masse retraction design with orthodontic mini-implant anchorage: A finite element analysis S.J. Sung, (et al.) P. 648-657

Palatal configuration in Class II Division 1 malocclusion: A longitudinal study Carla D'Agostini Derech, (et al.) P. 658-664

In-vitro study of cellular viability and nitric oxide production by J774 macrophages stimulated by interferon gamma with ceramic, polycarbonate, and polyoxymethylene brackets J. C. de Andrade Vitral, (et al.) P. 665-670

Mechanical behavior and clinical application of nickel-titanium closed-coil springs under different stress levels and mechanical loading cycles A. Wichelhaus, (et al.) P. 671-678

Effect of saliva contamination on bracket failure with a self-etching primer: A prospective controlled clinical trial M. D. Campoy, (et al.) P. 679-683

Shear bond strength of orthodontic brackets bonded to various esthetic pontic materials I. Maryanchik, (et al.) P. 684-689

Clinician's Corner

Spontaneous eruption of a canine after marsupialization of an infected dentigerous cyst S.de Azambuja Berti, (et al.) P. 690-693

Brodie bite with an extracted mandibular first molar in a young adult: A case report V. K. Chugh, (et al.) P. 694-700

Case Report

Lateral open bite: Treatment and stability M. de Castro Cabrera, (et al.) P. 701-711

Techno Bytes

Effective communication in the cyberage A. V. Revankar, (et al.) P. 712-714

Continuing Education

Earn 3 hours of CE credit M. Rennert P. 715.e1-715.e2

Reviews and Abstracts

Biomechanics in orthodontics A. Jacobson page 716

Common sense mechanics in everyday orthodontics II A.Jacobson P. 716-717

The

ANGLE ORTHODONTIST

An International Journal of Orthodontics and Dentofacial Orthopedics since 1930

Volume 80, Number 3, May 2010

What's New in Dentistry

- 423 Latest Research Reports from the Dental Literature
Vincent Kokich

Original Articles

- 425 Comparative Use of Invisalign® by Orthodontists and General Practitioners
José Vicéns, Antonino Russo
- 435 Evaluation of CBCT Digital Models and Traditional Models Using the Little's Index
Chung How Kau, Jay Littlefield, Neal Rainy, Jennifer T. Nguyen, Ben Creed
- 440 Increased Occurrence of Dental Anomalies Associated with Infraocclusion of Deciduous Molars
Miriam Shalish, Sheldon Peck, Atalia Wasserstein, Leena Peck
- 446 Autotransplantation of Teeth in 215 Patients
A Follow-up Study
Sven Kvint, Rune Lindsten, Anders Magnusson, Peter Nilsson, Krister Bjerklin
- 452 Root and Bone Response to the Proximity of a Mini-Implant under Orthodontic Loading
Yang-Ku Lee, Jong-Wan Kim, Seung-Hak Baek, Tae-Woo Kim, Young-Il Chang
- 459 Ultrastructure of the Interface between Periodontal Tissues and Titanium Mini-Implants
Jaqueline Carvalho Rinaldi, Victor E. Arana-Chavez
- 466 Cone Beam Computed Tomography for Assessment of Root Length and Marginal Bone Level during Orthodontic Treatment
Henrik Lund, Kerstin Gröndahl, Hans-Göran Gröndahl
- 474 Improved Lateral Cephalometric Superimposition Using an Automated Image Fitting Technique
Brent E. Larson, Matthew M. Sievers, Ching-Chang Ko
- 480 Short-Term Influence of Lingual Orthodontic Therapy on Microbial Parameters and Periodontal Status
A Preliminary Study
A. Demling, C. Demling, R. Schwestka-Polly, M. Stiesch, W. Heuer
- 485 Treatment Effects of Twin-Block and Mandibular Protraction Appliance-IV in the Correction of Class II Malocclusion
Ashok Kumar Jena, Ritu Duggal
- 492 Root Shortening in Patients Treated with Two-step and En Masse Space Closure Procedures with Sliding Mechanics
Yan Huang, Xu-Xia Wang, Jun Zhang, Chao Liu
- 498 Comparison of Low-Intensity Pulsed Ultrasound and Pulsed Electromagnetic Field Treatments on OPG and RANKL Expression in Human Osteoblast-like Cells
Manon A. Borsje, Yijin Ren, H. Willy de Haan-Visser, Roel Kuijer
- 504 Leptin Levels in Gingival Crevicular Fluid During Orthodontic Tooth Movement
Alparslan Diisiz, Nihat Killiç, Tugba Aydin, F. Nesibe Ates, Meltem Zihni, Caglar Bulut
- 509 Caries Risk Factors in Children under Treatment with Sectional Brackets
Sugako Sanpei, Toshiya Endo, Shohachi Shimooka
- 515 Young People's Esthetic Perception of Dental Midline Deviation
Yi-fan Zhang, Li Xiao, Juan Li, Yi-ran Peng, Zhihe Zhao
- 521 Debris, Roughness and Friction of Stainless Steel Archwires Following Clinical Use
Isabella Silva Vieira Marques, Adriana M. Araújo, Júlio A. Gurgel, David Normando
- 528 Clinical Outcomes of 0.018-Inch and 0.022-Inch Bracket Slot Using the ABO Objective Grading System
David A. Detterline, Serkis C. Isikbay, Edward J. Brizendine, Katherine S. Kula
- 533 Tongue Pressure Changes Before, During and After Crib Appliance Therapy
Sinem Taslan, Sibel Biren, Cenk Ceylanoglu
- 540 Effects of Occlusal Contact and Its Area on Gravity Fluctuation
Emi Oie, Mariko Horiuchi, Kunimichi Soma
- 547 Corrosion Resistance of Different Nickel-Titanium Archwires in Acidic Fluoride-containing Artificial Saliva
Tzu-Hsin Lee, Ta-Ko Huang, Shu-Yuan Lin, Li-Kai Chen, Ming-Yung Chou, Her-Hsiung Huang
- 554 The Essential Work of Fracture of Thermoplastic Orthodontic Retainer Materials
Albert L. Pascual, Cynthia S. Beeman, E. Preston Hicks, Heather M. Bush, Richard J. Mitchell
- 562 Influence of Natural Bovine Enamel Roughness on Bond Strength after Etching
Marcos Adriano Sabatoski, Ivan Toshio Maruo, Elisa Souza Camargo, Odilon Guariza Filho, Orlando Motohiro Tanaka, Hiroshi Maruo

- 570 **Plant Extract Ankaferd Blood Stopper Effect on Bond Strength**
Goksu Trakyalı, M. Oguz Oztoprak
-

Review Article

- 575 **Self-Ligating Brackets in Orthodontics**
A Systematic Review
Padhraig S. Fleming, Ama Johal
-

Case Reports

- 585 **Multiple Endocrine Neoplasia-2B Presenting with Orthodontic Relapse**
Brent Accurso, Ana Mercado, Carl M. Allen
- 591 **Location and Presence of Permanent Teeth in a Complete Bilateral Cleft Lip and Palate Population**
Richard Michael Halpern, James Noble
- 597 **Rapid Tooth Movement and Orthodontic Treatment Using Dentoalveolar Distraction (DAD)**
Gökmen Kurt, Haluk İşeri, Reha Kişnişci
-

Editorial

- 607 **Objective and Reproducible Model Assessment**
Robert J. Isaacson

SUMARIO

A nuestros lectores	69
Consideraciones actuales sobre la presencia de papilomavirus humano en la cavidad oral MEDINA ML, MEDINA MG, MERINO LA	71
Epidermólisis ampollosa de la unión: implicación oral. A propósito de un caso PIPA VALLEJO A, LÓPEZ-ARRANZ MONJE E, GONZÁLEZ GARCÍA M, ORTIZ MACRIZ J, PIPA MUÑOZ M	81
Cuantificación de la generación térmica en acrílicos de autopolimerización TAPIA SILVA R, VALENZUELA ARÁNQUIZ V, ZAMORANO PINO X, BAENA ÁGUILA R	91
Formación de capa híbrida al cementar postes metálicos y de fibra de vidrio en dientes tratados endodónticamente VALENZUELA ARÁNQUIZ V, ZAMORANO PINO X, WAGNER HITSCHFELD S, TAPIA SILVA JR	97
Influencia de los márgenes de las restauraciones sobre la salud gingival ARDILA MEDINA CM	107

ACEPTADA EN EL ÍNDICE BIBLIOGRÁFICO ESPAÑOL EN CIENCIAS DE LA SALUD (IBECS) Y EN SCIELO.

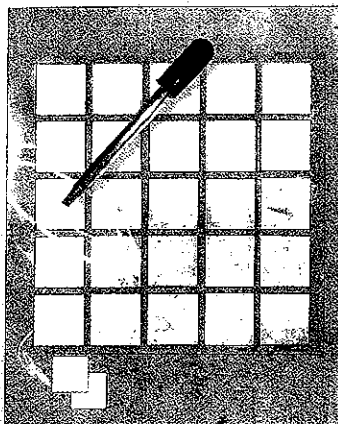
LAS DIRECCIONES DE INTERNET PARA ENCONTRAR LAS REVISTAS INDEXADAS SON LAS SIGUIENTES:

AVANCES EN ODONTOESTOMATOLOGÍA

http://scielo.isciii.es/scielo.php/script_sci_serial/pid_0213-1285/Ing_es/nr

AVANCES EN PERIODONCIA E IMPLANTOLOGÍA ORAL

http://scielo.isciii.es/scielo.php/script_sci_serial/pid_1130-1457/Ing_es/nr



Digital colour matching



Dental care for adults with complex needs p278



New treatment for cleft palates p280

BDJ

BRITISH DENTAL JOURNAL
incorporating DENTAL BUSINESS

COVER IMAGE

DIGITAL COLOUR MATCHING

The series of cover images featured in this volume of the Journal represent the 12 most highly cited papers published in the BDJ between 2004 and 2009. The image on the cover of this issue represents the paper 'The use of digital imaging for colour matching and communication in restorative dentistry' by F. D. Jarad et al., which had been cited 22 times at the time of going to press.

Jarad F D, Russell M D, Moss B W. The use of digital imaging for colour matching and communication in restorative dentistry. Br Dent J 2005; 199: 43-49.

Cover illustration by Danny Allison
www.dannyallison.co.uk

Citation data according to Scopus: www.scopus.com.

EDITORIAL

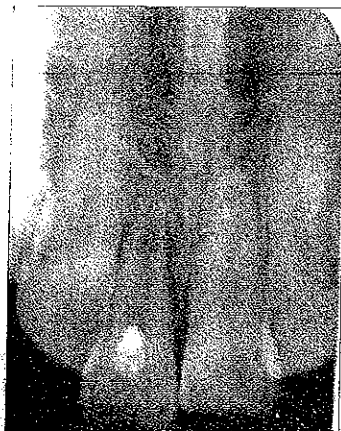
- 271 Portrait or landscape?
Stephen Hancocks OBE

LETTERS

- 273 The same mistakes
H₂O₂ and the law
- 274 Differing guidelines
Oil in cheek
Intubation litigation
Second degrees
- 275 Medical school support

NEWS

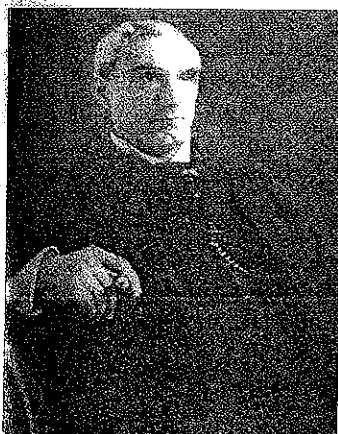
- 277 BDA celebrates 130th birthday
Disappointment over funding award
- 278 Increasing oral health awareness
Dental care for adults with complex needs
- 279 Safeguards introduced for provision of injectable cosmetic treatments
- 280 New treatment for cleft palates
Pilots underway



Pre-operative radiograph showing severe root resorption with thin, fragile dentinal walls in relation to the maxillary right central incisor. There is irregular periodontal ligament space p287



Extensive ulceration of the palate and lateral aspects of tongue secondary to deliberate application of sulphuric acid p297



Frank Harrison MRCS LDS RCS taken in 1898 p309

PRACTICE

- 283 Numb chin syndrome: an ominous clinical sign
F. Ryba, S. Rice, I. L. Hutchison
- 287 Management of inflammatory root resorption using MTA obturation – a four year follow up VERIFIABLE CPD PAPER
V. Aggarwal, M. Singla
- 291 BDA special care case mix model
P. Bateman, C. Arnold, R. Brown, L. V. Foster, S. Greening, N. Monaghan, L. Zoitopoulos
- 296 Erratum
- 297 Traumatic chemical oral ulceration: a case report and review of the literature
C. Gilvetti, S. R. Porter, S. Fedele

ABSTRACTS

- 303 A selection of abstracts of clinically relevant papers from other journals *John R. Radford*
 SHEA guideline for management of healthcare workers who are infected with Hepatitis B virus, Hepatitis C virus, and/or Human Immunodeficiency Virus
 Social judgements made by children in relation to visible incisor trauma
 Vertical fracture of root filled teeth restored with posts: the effects of patient age and dentine thickness
 Non-surgical management of paraesthesia and pain associated with endodontic sealer extrusion into the mandibular canal

RESEARCH SUMMARIES

- 304 Summary of: 'General dental practitioner views on providing alcohol related health advice; an exploratory study'
- 306 Summary of: 'The cleaning of photographic retractors: a survey, clinical and laboratory study'

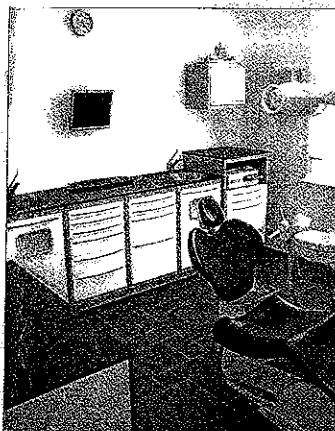
ONLINE RESEARCH PAPERS

- E13 General dental practitioner views on providing alcohol related health advice; an exploratory study
S. Shepherd, L. Young, J. E. Clarkson, D. Bonetti, G. R. Ogden
DOI: 10.1038/sj.bdj.2010.342
- E14 The cleaning of photographic retractors: a survey, clinical and laboratory study VERIFIABLE CPD PAPER
P. E. Benson, A. Ebhohimen, I. Douglas
DOI: 10.1038/sj.bdj.2010.310

GENERAL

- 309 A look back in time. The training of dental students in Sheffield before the opening in 1953 of the Charles Clifford Dental Hospital
K. H. Figures





Create the ideal working space in your surgery p319



Ability to move freely p322

CPD PROGRAMME

- 315 Answers to CPD questions included in the 13 March issue of the *BDJ*
- 316 CPD Article 1 – pages 287–289 and CPD Article 2 – online article E14

PRODUCT NEWS

- 319 Prevent the spread of infection via the keyboard or mouse
 - Planning for compliant success
 - Create the ideal working space in your surgery
- 320 Flexible learning experiences available
 - Range of products a click away
 - Create balance and mobility
 - New website designed to take the pain out of CPD
 - Practical training experience
- 321 Mobile and manoeuvrable chair introduced
 - Webinar lectures launched for 2010
 - One day course
- 322 Ability to move freely
 - Express your own unique style
 - New endodontic course launched at Warwick
 - Blended learning

REVIEWS

- 323 Open wide: memoir of the dental Dame
 - Orofacial pain
- 324 Self-ligation in orthodontics
 - Textbook of endodontology, 2nd edition

OBITUARIES

- 325 Thomas Owen Hughes
 - Alistair Campbell McLundie

new dental instrument decontamination training...

are you HTM01-05 compliant?

train at Eastwood Park or we can come 2U

new!



- attend our scheduled courses (including manager's roles and responsibilities)
- alternatively we can come to you and train on your premises
- develop your skills at work or at home with our new e-learning course and qualify for City & Guilds with one day's final practical assessment at Eastwood Park
- come to one of our regional seminars - call to book a place

For further information on our courses, offers and group discounts:
 visit our website | email training@eastwoodpark.co.uk | call +44 (0) 1454 262777
 Eastwood Park Training Falfield Wotton-under-Edge Glos GL12 8DA

Eastwood Park
 eastwoodpark.co.uk



Lichenoid lesions and dental restoratives



New director appointed p334



Successful re-launch celebrated p335

BDJ

BRITISH DENTAL JOURNAL
incorporating DENTAL BUSINESS

COVER IMAGE

LICHENOID LESIONS AND DENTAL RESTORATIVES

The series of cover images featured in this volume of the Journal represent the 12 most highly cited papers published in the BDJ between 2004 and 2009. The image on the cover of this issue represents the paper 'Oral lichenoid lesions related to dental restorative materials' by Y. Issa et al., which had been cited 18 times at the time of going to press.

Issa Y, Duxbury A J, Macfarlane T V, Brunton P A. Oral lichenoid lesions related to dental restorative materials. Br Dent J 2005; 198: 361-366.

Cover illustration by Danny Allison
www.dannyallison.co.uk

Citation data according to Scopus: www.scopus.com.

EDITORIAL

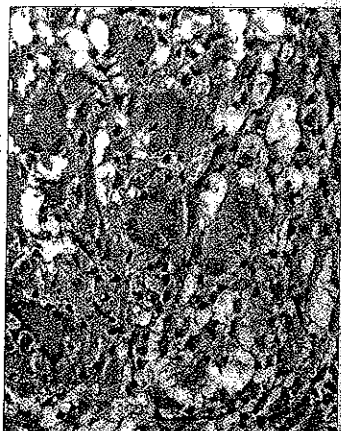
- 327 Beware the irony of the humble full-full**
Stephen Hancocks OBE

LETTERS

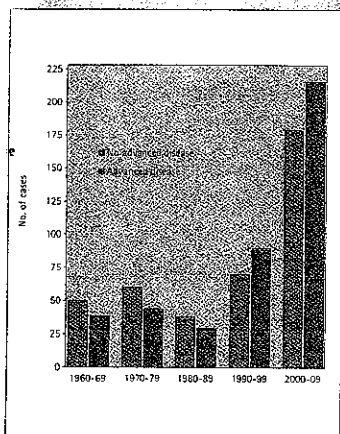
- 329 Helpful and timely**
Factually inaccurate
- 330 Inappropriate referrals**
Retained tooth fragment
Sufficient retention
- 331 Unfounded allegations**
Listen to the people

NEWS

- 333 New Scottish dental centre will support new graduates**
Focus on value of commissioning
- 334 Acupuncture may help patients with dental anxiety**
New director appointed
- 335 BDA Annual General Meeting notice**
Funding now available
Successful re-launch celebrated
New School of Health facilities at Northampton
- 336 Student prize winner**
Special care dentistry deadline approaches



Results of the histopathological examination p343



Bar chart indicating proportion of early versus advanced oral cancers at Hull and Guy's Hospital, in period 1960-2009 p347

PRACTICE

- 339 General medicine and surgery for dental practitioners. Part 1 – the older patient
M. Greenwood, R. H. Jay, J. G. Meechan
- 343 Primary tuberculosis masquerading as gingival enlargement
VERIFIABLE CPD PAPER
J. S. Gill, S. Sandhu, S. Gill
- 347 The reality of identifying early oral cancer in the general dental practice
VERIFIABLE CPD PAPER
M. McGurk, S. E. Scott

ABSTRACTS

- 353 A selection of abstracts of clinically relevant papers from other journals *John R. Radford*
Empirical evidence of the relationship between parental and child dental fear: a structured review and meta-analysis
Zirconia implant abutment fracture: clinical case reports and precautions for use
Dental erosion protection by fermented shrimp paste in acidic food
Heritability of dental fear

RESEARCH SUMMARIES

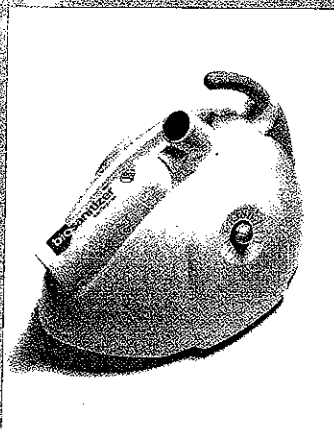
- 354 Summary of: 'The oral health status of adults with a visual impairment, their dental care and oral health information needs'
- 356 Summary of: 'Does the use of photography help to prioritise patients when referring to the oral medicine department?'

EVIDENCE SUMMARY

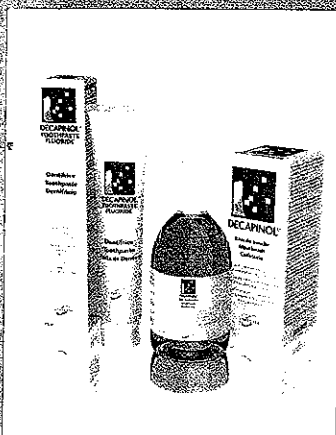
- 359 Evidence summary: what do dentists mean by 'prevention' when applied to what they do in their practices?

ONLINE RESEARCH PAPERS

- E15 The oral health status of adults with a visual impairment, their dental care and oral health information needs
E. K. Watson, D. R. Moles, N. Kumar, S. R. Porter
DOI: 10.1038/sj.bdj.2010.395
- E16 Does the use of photography help to prioritise patients when referring to the oral medicine department?
A. Aslam, J. Hamburger
DOI: 10.1038/sj.bdj.2010.396



Complete disinfection without residue p370



Building an invisible barrier p374

CPD PROGRAMME

- 365 Answers to CPD questions included in the 27 March issue of the *BDJ*
- 366 CPD Article 1 – pages 343–345 and CPD Article 2 – pages 347–351

PRODUCT NEWS

- 369 Unique business partnership
 - New generation of posterior composites
 - Take-home tooth whitening systems
 - Benefit from financial advice
- 370 Market your practice
 - Colourful cannulas
 - Source flexible loans
 - Complete disinfection without residue
 - Expert support for purchasing a practice
- 371 Building an invisible barrier
 - Legal partnership agreements
 - Help when selling your practice
- 372 Excellence in interdisciplinary treatment planning
 - Fees in the event of a tax investigation
 - Unique one-step finisher and polisher
 - High fracture toughness
 - Optimise your practice's potential

REVIEWS

- 373 Milk fluoridation for the prevention of dental caries
- Aesthetic and restorative dentistry: material selection and technique
- 374 PasTest dentistry online
- Peri-implant infection

OBITUARIES

- 375 Margaret Barr
- Richard Brockbank Ward

UCL EASTMAN DENTAL INSTITUTE

SHORT COURSES, MODULAR PROGRAMMES, CERTIFICATES,
DIPLOMAS, MASTERS, SPECIALTY TRAINING, RESEARCH DEGREES,
DCP TRAINING, DISTANCE AND ONLINE LEARNING



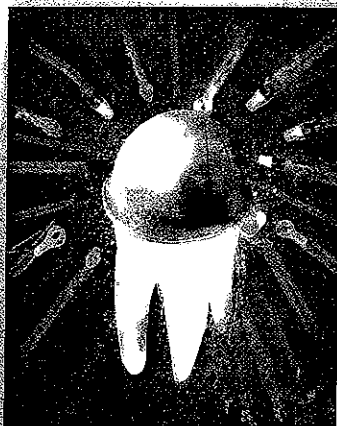
Eastman Continuing Professional Development
123 Gray's Inn Road, London WC1X 8WD
Tel: 020 7905 1234
cpd@eastman.ucl.ac.uk
www.eastman.ucl.ac.uk/cpd

eastman CONTINUING PROFESSIONAL DEVELOPMENT

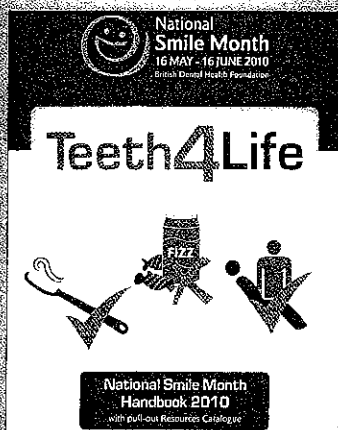
UCL DIPLOMA IN IMPLANT DENTISTRY

This Diploma is a structured 2 level programme of didactic study held one day per month over a period of 4 years starting in October 2010. Teaching will include interactive lectures, seminars, hands-on procedures and live surgery. This is a limited attendance course working towards a university accredited postgraduate qualification. Acceptance will be through competitive entry and the closing date for applications is 30th July 2010.

For further information or to register, please contact Dawn Mifsud
Tel: 020 7905 1261 Email: d.mifsud@eastman.ucl.ac.uk



Stainless steel crowns for primary molars



National Smile Month campaign gathers pace p383



FGDP(UK) welcomes new journal editor p385

BDJ

BRITISH DENTAL JOURNAL
incorporating DENTAL BUSINESS

COVER IMAGE

STAINLESS STEEL CROWNS FOR PRIMARY MOLARS

The series of cover images featured in this volume of the Journal represent the 12 most highly cited papers published in the BDJ between 2004 and 2009. The image on the cover of this issue represents the paper 'General dental practitioners' views on the use of stainless steel crowns to restore primary molars' by A. G. Threlfall et al., which had been cited 17 times at the time of going to press.

Threlfall A G, Pilkington L, Milsom K M, Blinkhorn A S, Tickle M. General dental practitioners' views on the use of stainless steel crowns to restore primary molars. Br Dent J 2005; 199: 453-455.

Cover illustration by Danny Allison

www.dannyallison.co.uk

Citation data according to Scopus: www.scopus.com.

EDITORIAL

377 NHS dentistry and our new government

Susie Sanderson

LETTERS

379 No to BDA

Prison decisions

380 Running pain

A poor grasp

Deprivation measures

Dental status

381 Discontinuation concern

NEWS

383 National Smile Month campaign gathers pace

Call for dentists with Olympic spirit

384 Green tea and oral health examined in study

Bone growth after tooth extractions examined

385 FGDP(UK) welcomes new journal editor

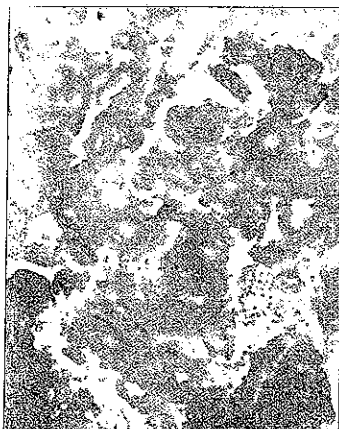
GDC appoints new Chief Executive and Registrar

Founder's achievements commemorated

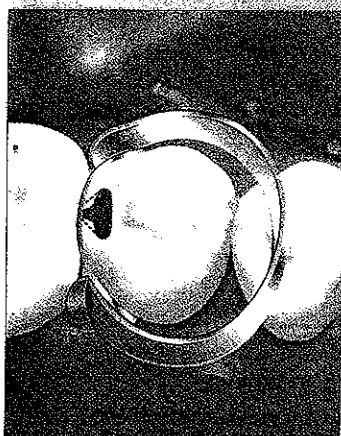
386 Death notice

New £6,000 funding available for research in primary dental care

Student fitness to practise guidance launched



The histological appearance of amyloid stained with Congo Red p389



The marginal ridge above the cavity is carefully thinned and then broken p395

PRACTICE

- 389 General medicine and surgery for dental practitioners. Part 2 – metabolic disorders
M. Greenwood, J. G. Meechan
- 395 Resin composite contours VERIFIABLE CPD PAPER
H. Sidelsky

ABSTRACTS

- 405 A selection of abstracts of clinically relevant papers from other journals *John R. Radford*
Health risk from occlusal interferences in females
Killing of adherent oral microbes by a non-thermal atmospheric plasma jet
Periodontitis-associated up-regulation of systemic inflammatory mediator level may increase the risk of coronary heart disease
Comparison of cutting efficiencies between electric and air-turbine dental handpieces

RESEARCH SUMMARIES

- 406 Summary of: 'The survival of Class V restorations in general dental practice. Part 1, baseline data'
- 408 Summary of: 'Success rate of calcium hydroxide pulpotomy in primary molars restored with amalgam and stainless steel crowns'

EVIDENCE SUMMARY

- 411 Evidence summary: do people living in deprived areas define oral health differently from people who live in less deprived areas?

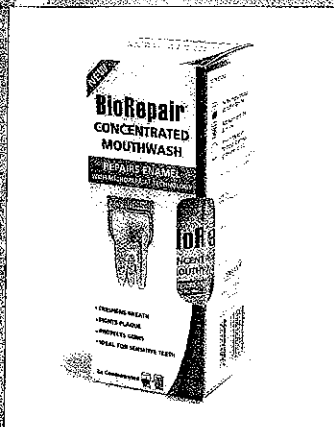
ONLINE RESEARCH PAPERS

- E17 The survival of Class V restorations in general dental practice. Part 1, baseline data VERIFIABLE CPD PAPER
D. Stewardson, P. Thornley, T. Bigg, C. Bromage, A. Browne, D. Cottam, D. Dalby, J. Gilmour, J. Horton, E. Roberts, L. Westoby, T. Dietrich, T. Burke
DOI: 10.1038/sj.bdj.2010.445
- E18 Success rate of calcium hydroxide pulpotomy in primary molars restored with amalgam and stainless steel crowns
L. Duruturk, D. Sonmez
DOI: 10.1038/sj.bdj.2010.446

EDUCATION

- 415 Teaching of direct posterior resin composite restorations in UK dental therapy training programmes
C. D. Lynch, N. H. F. Wilson





Protecting the health of teeth
p428



Detects calculus without harming healthy teeth p430

CPD PROGRAMME

- 423 Answers to CPD questions included in the 10 April issue of the *BDJ*
- 424 CPD Article 1 – pages 395–401 and CPD Article 2 – online article E17

PRODUCT NEWS

- 427 Get up to date
Real-time diagnostic and intervention capacity
Working more profitably
- 428 Celebrate Smile Month
Unique pivot systems
Improving the patient–practice relationship
Protecting the health of teeth
New gel toothpaste launched
- 429 Caries infiltration therapy
Rapid sterilisation programme
- 430 Essentials of oral hygiene
Effectively tackling bacteria
Making ordering quicker
Detects calculus without harming healthy teeth

REVIEWS

- 433 The neurobiology of orthodontics: treatment of malocclusion through neuroplasticity
Periodontology at a glance
Dentistry in prisons – a guide to working within the prison environment
- 434 Oxford specialist handbooks in surgery: oral and maxillofacial surgery
Infection control for the dental team



BDA MEMBERS
£107.50
Code SETUP

NON MEMBERS
£325.50
Inc VAT
Code SETUP

Setting Up In Practice Toolkit

Making a success of a new business takes more than entrepreneurial flair and desire to manage your own destiny. It takes thought, planning, management skills, determination and appropriate professional advice. The new *Setting Up In Practice Toolkit* takes a step-by-step approach to setting up a profitable, growing practice. It covers everything from the legal and financial aspects to the practicalities of running a successful business.



British Dental Association
11, Spa Street, London WC1A 9EU
Tel: 020 7625 5500

For more information visit www.bda.org.uk/shop