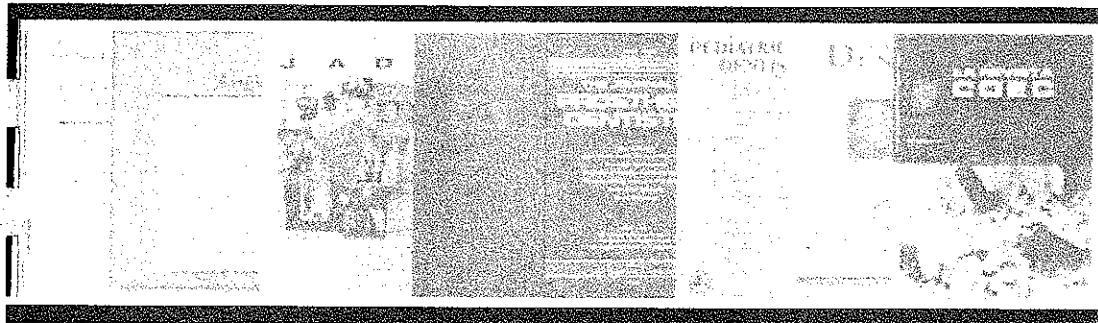


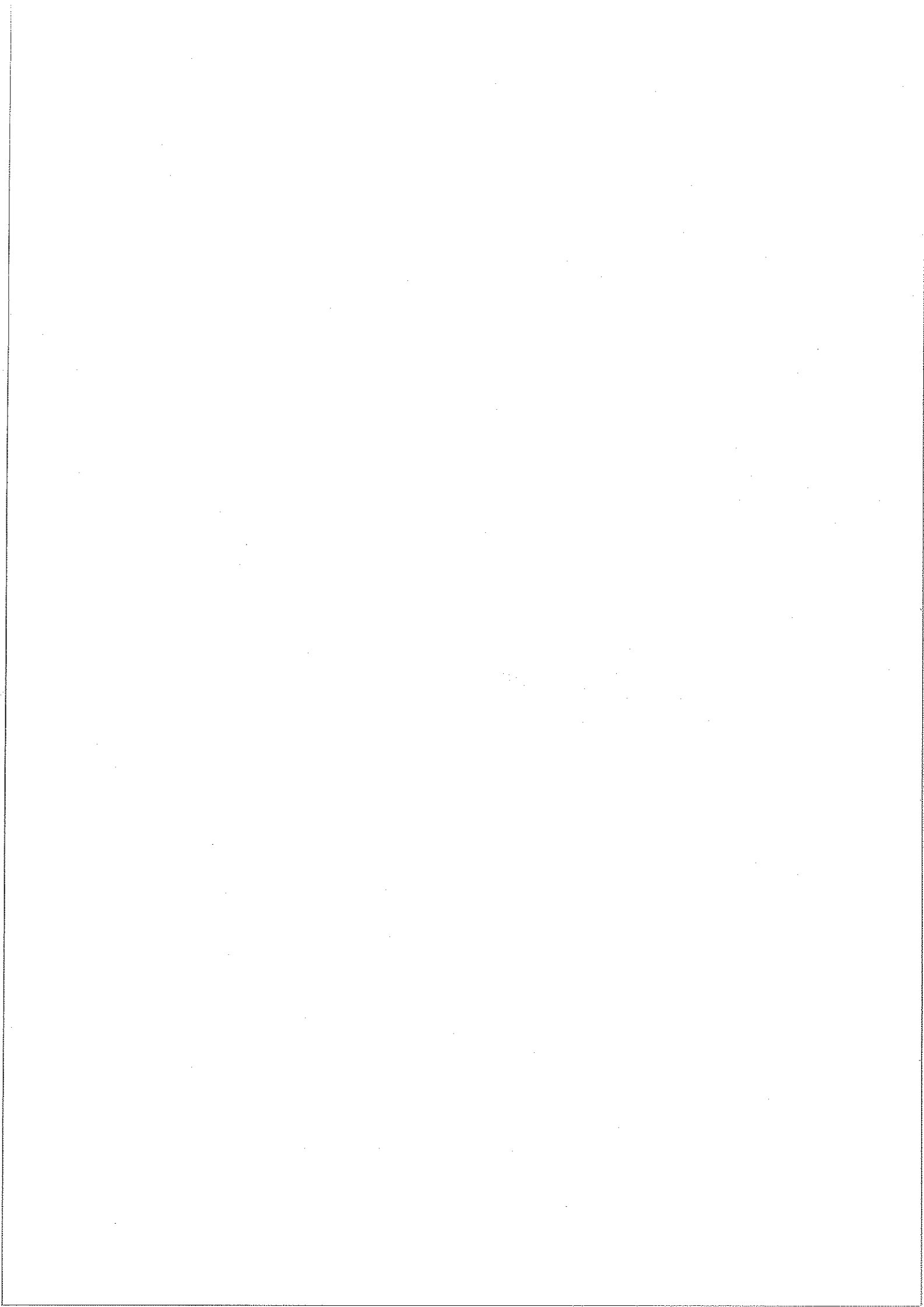
BUTLLETI DE SUMARIS

Febrer 2010



COL·LEGI OFICIAL D'ODONTÒLEGS I ESTOMATÒLEGS DE CATALUNYA
BIBLIOTECA.

TRAVESSERA DE GRÀCIA, 93-95 08006 BARCELONA TL. 93 3101555 FAX 93 3101556
e-mail: mnadal@coec.net



PRESENTACIÓ

El propòsit principal d'un Butlletí de Sumaris és la màxima difusió de la informació actualitzada que proporcionen les publicacions periòdiques. El Butlletí de Sumaris del COEC aplega, mensualment, els sumaris de les revistes d'Odontostomatologia i de matèries afins que es reben a la Biblioteca.

En cada número es dona la relació dels títols d'aquestes revistes a continuació de la presentació. Els sumaris estan ordenats, al Butlletí, alfabèticament pel títol, essent també accessibles per la matèria general de la revista mitjançant l'Index de Matèries del Butlletí.

Aquesta eina bibliogràfica permet aproximar el perfil d'interès del lector al contingut de les principals publicacions periòdiques d'Odontostomatologia, sense necessitat d'estar-hi subscrit. Totes les revistes relacionades es troben a la Biblioteca, de manera que l'usuari pot demanar, si li interessa, còpia de qualsevol dels articles citats.

REVISTES INCLOSES EN AQUEST BUTLLETÍ

- Acta odontologica Scandinavica
- Angle Orthodontist
- British Dental Journal
- Clinical Oral Implant Research
- Dental Practice
- Endodoncia
- European Jnl. of Orthodontics
- Gaceta dental
- Implant Dentistry
- International Journal of Oral and Maxillofacial Implants
- International Journal of Oral and Maxillofacial Surgery
- Journal of the American Dental Association
- Journal of the Esthetic & Restorative Dentistry
- Journal of the History Dentistry
- Maxillaris
- Oral Surgery, Oral Medicine, Oral Pathology
- Periodoncia y Osteointegración
- Revista Internacional de Odontología Restauradora & Periodoncia
- Revista Internacional de Prótesis Estomatológica

MATERIA	TITOL DE LA REVISTA	pag
CIRURGIA ORAL	Intern. Jnl. Oral & Maxil.Surgery Vol.39 Núm.1 (gener 10)	20
	Oral S., Oral M., Oral P., Oral R. Vol.109 Núm.2(febrer 10)	27
ENDODÒNCIA	Endodoncia . Vol. 27 Núm.4 (oct-des. 09)	14
IMPLANTS DENTALS	Clinical Oral Implant Research. Vol.21 Núm.3 (març 10)	11
	Implant Dentistry Vol.19 Núm.1 (gener 10)	17
	JOMI Vol.24 Núm.6 (09)	18
HISTÒRIA DENTAL	Journal of the History of Dentistry Vol.57 Núm.3 (09)	24
ODONTOSTOMATOLOGIA	Acta Odont. Scandinavica Vol.68 Núm.1 (gener 10)	1
	British Dent. Jnl. Vol.208 Núm.2,3 (gener, febrer 10)	5
	Dental Practice Vol.5 Núm.1 (gener-feb.10)	12
	Gaceta Dental Núm.211 (febrer 10)	16
	JADA. Ed. Esp. Vol.5 Núm.1 (febrer 10)	22
	Maxillaris. Núm.129 (febrer 10)	25
ODONT. CONSERVADORA	Jnl. Esthetic & Restor. Dentistry. Vol.22 Núm.1 (gener 10)	23
	Rev. Int. Odont. Restaur. & Periodoncia. Vol.13 Núm.5,6 (09)	30
ORTODÒNCIA	Angle Orthodontist Vol.80 Núm.1(gener 10)	3
	European Jnl. of Orthod. Vol.32 Núm.1 (febrer 09)	15
PERIODÒNCIA	Periodoncia y Osteointegración Vol.19 Núm. 4 (09)	29
	Rev. Int. Odont. Restaur. & Periodoncia. Vol.13 Núm.5,6 (09)	30
PRÒTESI DENTAL	Rev. Intern. Prótesis Estomatol. Vol.11 Núm.4 (desembre 09)	32

ACTA ODONTOLOGICA SCANDINAVICA

CONTENTS

VOLUME 68

NUMBER 1

JANUARY 2010

ORIGINAL ARTICLES

- Chemical durability and microhardness of dental ceramics immersed in acidic agents** 1
Boonlert Kukiattrakoon, Chanothai Hengtrakool and Ureporn Kedjarune-Leggat
- In situ evaluation of the remineralizing capacity of pit and fissure sealants containing amorphous calcium phosphate and/or fluoride** 11
Kélio Garcia Silva, Denise Pedrini, Alberto Carlos Botazzo Delbem, Lilian Ferreira and Mark Cannon
- A qualitative study of the influence of poor dental aesthetics on the lives of young adults** 19
Eva Josefsson, Rune Lindsten and Lillemor R.-M. Hallberg
- Relationship between periodontitis and hepatic abnormalities in young adults** 27
Michiko Furuta, Daisuke Ekuni, Tatsuo Yamamoto, Koichiro Irie, Reiko Koyama, Toshihiro Sanbe, Reiko Yamanaka, Manabu Morita, Kiyomi Kuroki and Kazuo Tobe
- Oral health in children and adolescents with different socio-cultural and socio-economic backgrounds** 34
Lisa Bøge Christensen, Svante Twetman and Annette Sundby

(Continued on Back Cover)

informa
healthcare

ACTA ODONTOLOGICA SCANDINAVICA

CONTENTS *(Continued)*

- Economic aspects of mandibular third molar surgery** 43
Rolf Liedholm, Kerstin Knutsson and Anders Norlund
- Tracking of parents' attitudes to their children's oral health-related behavior—Oslo, Norway, 2002–04** 49
Marit S Skeie, Kristin S. Klock, Ola Haugejorden, Paul J. Riordan and Ivar Espelid
- Dental caries, tooth eruption timing and obesity: A longitudinal study in a group of Mexican schoolchildren** 57
Leónor Sánchez-Pérez, María Irigoyen and Marco Zepeda

The

ANGLE ORTHODONTIST

An International Journal of Orthodontics and Dentofacial Orthopedics since 1930

Volume 80, Number 1, January 2010

What's New in Dentistry

- 3 Latest Research Reports from the Dental Literature
Vincent Kokich

Original Articles

- 5 Long-Term Effects of Rapid Maxillary Expansion Followed by Fixed Appliances
Hakan Gurcan Gurel, Badel Memili, Mustafa Erkan, Yusuf Sukurica
- 10 Long-Term Dentoskeletal Effects and Facial Profile Changes Induced by Bionator Therapy
Luciana Abrao Malta, Tiziano Baccetti, Lorenzo Franchi, Kurt Faltin, Jr., James A. McNamara, Jr.
- 18 Long-Term Dentoskeletal Changes with the Bionator, Herbst, Twin Block, and MARA-Functional Appliances
Nicole J. Siara-Olds, Valmy Pangrazio-Kulbersh, Jeff Berger, Burcu Bayirli
- 30 Five Years of Sleep Apnea Treatment with a Mandibular Advancement Device
Side Effects and Technical Complications
Jordi Martínez-Gomis, Eva Willaert, Lluís Nogues, Maribel Pascual, Maria Somoza, Carmen Monasterio
- 37 Facial Profile Shape, Malocclusion and Palatal Morphology in Malay Obstructive Sleep Apnea Patients
S.M. Banabilh, A.R. Samsudin, A.H. Suzina, Sidek Dinsuhaimi
- 43 Psychological Status of Patients Referred for Orthognathic Correction of Skeletal II and III Discrepancies
Donald J. Burden, Orlagh Hunt, Chris D. Johnston, Michael Stevenson, Ciaran O'Neill, Peter Hepper
- 49 Fixed Orthodontic Appliance Therapy and Its Impact on Oral Health-Related Quality of Life in Chinese Patients
Mu Chen, Da-Wei Wang, Li-Ping Wu
- 54 Duration of the Pubertal Peak in Skeletal Class I and Class III Subjects
Malgorzata Kuc-Michalska, Tiziano Baccetti
- 58 Soft Tissue Images from Cephalograms Compared With Those from a 3D Surface Acquisition System
Angela K. Incrapera, Chung How Kau, Jeryl D. English, Kathleen McGrory, David M. Sarver
- 65 Functional Occlusal Patterns and Their Relationship to Static Occlusion
Kazem S. Al-Nimri, Anwar B. Bataineh, Sawsan Abo-Farha
- 72 Maximum Closing Force of Mentolabial Muscles and Type of Malocclusion
Min-Ho Jung, Won-Sik Yang, Dong-Seok Nahm
- 80 Soft Tissue Morphology of Jordanian Adolescents
Ahmad Mohammad Hamdan
- 86 Cephalometric Characteristics of Korean Children with Class III Malocclusion in the Deciduous Dentition
Hyung-Jun Choi, Ji-Yeon Kim, Seung Eun Yoo, Jang-Hyuk Kwon, Kitae Park
- 91 Skeletal and Soft Tissue Point A and B Changes Following Orthodontic Treatment of Nepalese Class I Bimaxillary Protrusive Patients
Jagan Nath Sharma
- 97 Mandibular Growth, Remodeling, and Maturation During Infancy and Early Childhood
Yi-Ping Liu, Rolf G. Behrents, Peter H. Buschang
- 106 Rapid Maxillary Expansion Affects the Spheno-occipital Synchondrosis in Youngsters
A Study with Low-Dose Computed Tomography
Rosalía Leonardi, Alice Cutrera, Ersilia Barbato
- 111 Tooth Movement Activates the Central Amygdala and the Lateral Hypothalamus by the Magnitude of the Force Applied
Ana Paula Ribeiro Novaes, Maria José Alves da Rocha, Christie Ramos Andrade Leite-Panissi
- 116 Effects of Low-Level Laser Therapy and Orthodontic Tooth Movement on Dental Pulp in Rats
Luciana Baptista Pereira Abi-Ramia, Andrea Sasso Stuani, Adriana Sasso Stuani, Maria Bernadete Sasso Stuani, Alvaro de Moraes Mendes
- 123 Resistance to Immediate Orthodontic Loading of Surface-Treated Mini-Implants
Sung-Seo Mo, Seong-Hun Kim, Yoon-Ah Kook, Do-Min Jeong, Kyu-Rhim Chung, Gerald Nelson
- 130 Root Contact during Drilling for Microimplant Placement
Affect of Surgery Site and Operator Expertise
U-Hyeong Cho, Wonjae Yu, Hee-Moon Kyung
- 137 Palatal Bone Density in Adult Subjects: Implications for Mini-Implant Placement
Sung Hee Moon, Sun Hyung Park, Won Hee Lim, Youn Sic Chun
- 145 Optimal Palatal Configuration for Miniscrew Applications
Luca Lombardo, Antonio Gracco, Francesco Zampini, Filippo Stefanoni, Francesco Mollica

- 153 **Palatal Volume Following Rapid Maxillary Expansion in Mixed Dentition**
Antonio Gracco, Andrea Malaguti, Luca Lombardo, Alida Mazzoli, Roberto Raffaell
- 160 **The Validity of In Vivo Tooth Volume Determinations From Cone-Beam Computed Tomography**
Yi Liu, Raphael Olszewski, Emanuel Stefan Alexandroni, Reyes Enciso, Tianmin Xu, James K. Mah
- 167 **Porcelain Surface Alterations and Refinishing After Use of Two Orthodontic Bonding Methods**
Drew T. Herion, Jack L. Ferracane, David A. Covell, Jr.
- 175 **Physical Properties of Conventional and Super Slick Elastomeric Ligatures after Intraoral Use**
Nicola Louise Crawford, Caroline McCarthy, Tanya C. Murphy, Philip Edward Benson
- 182 **Forces of Various Nickel Titanium Closed Coil Springs**
Anthony Louis Maganzini, Alan M. Wong, Mairaj K. Ahmed
- 188 **Self-Ligation Esthetic Brackets with Low Frictional Resistance**
John C. Voudouris, Christos Schismeros, Kresimir Lackovic, Mladen M. Kuflinec
- 195 **Flowable Composites for Bonding Orthodontic Retainers**
Sama Tabrizi, Elio Salemis, Serdar Usumez
-

Review Articles

- 201 **Torque Expression in Stainless Steel Orthodontic Brackets**
Amy Archambault, Ryan Lacoursiere, Hisham Badawi, Paul W. Major, Jason Carey, Carlos Flores-Mir
- 211 **Soft Tissue Changes Following the Extraction of Premolars in Nongrowing Patients With Bimaxillary Protrusion**
Rosalía Leonardi, Alberto Annunziata, Valeria Licciardello, Ersilia Barbato
-

Editorial

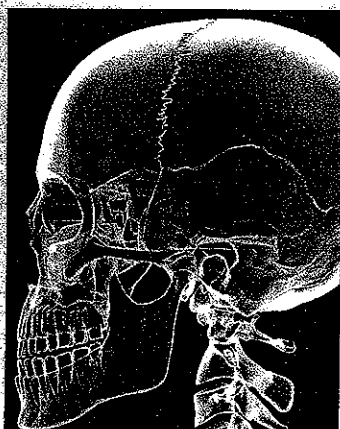
- 217 ***The Angle Orthodontist: 10 Years Later***
Robert J. Isaacson



Factors associated with dental erosion



Plans to fine non-attending patients marks start of election campaign p51



Breakthrough in understanding of osteoporosis p54

BDJ

BRITISH DENTAL JOURNAL
incorporating DENTAL BUSINESS

COVER IMAGE

FACTORS ASSOCIATED WITH DENTAL EROSION

The series of cover images featured in this volume of the Journal represent the 12 most highly cited papers published in the BDJ between 2004 and 2009. The image on the cover of this issue illustrates two related papers: 'A multifactorial analysis of factors associated with dental erosion' and 'The prevalence of tooth erosion in 12-year-old children' by C. R. Dugmore and W. P. Rock. The papers had been cited 34 and 28 times, respectively, at the time of going to press.

Dugmore C R, Rock W P. A multifactorial analysis of factors associated with dental erosion. Br Dent J 2004; 196: 283-286; and The prevalence of tooth erosion in 12-year-old children. Br Dent J 2004; 196: 279-282.

Cover illustration by Danny Allison
www.dannyallison.co.uk

Citation data according to Scopus: www.scopus.com.

EDITORIAL

- 45 No going back
Stephen Hancocks OBE

LETTERS

- 47 Methods not ideal
Five circle test
- 48 The tipping point?
- 49 Violence-free
Occupational stress

NEWS

- 51 Plans to fine non-attending patients marks start of election campaign
BDA demands explanation over NICE review rejection
- 52 Queen's New Year Honours announced
Hidden costs of treatment abroad highlighted
British Dental Conference and Exhibition 2010
- 53 Orthodontist wins award
Taxman targets medics and dentists
Overseas appointment for UK dentist
More people participate in BDJ online CPD
- 54 Breakthrough in understanding of osteoporosis
Survey explores benefits of braces



In between washings the wound was packed with gauze lined with 1% HP cream p61



Dental mutilations p77

OPINION

- 55 A practical approach to risk for 21st century regulators
R. Haythornthwaite

PRACTICE

- 61 Clinical use of hydrogen peroxide in surgery and dentistry – why is there a safety issue? VERIFIABLE CPD PAPER
V. Patel, M. McGurk, M. Kelleher
- 65 A survey of self-assessed surgical competencies with respect to qualifications, training and working patterns of members on the oral surgery register VERIFIABLE CPD PAPER
A. Messiha, A. Chadha, I. Al-Hadad, Z. Hussain, M. Heliotis

ABSTRACTS

- 71 A selection of abstracts of clinically relevant papers from other journals *John R. Radford*
- Caries is associated with asthma and epilepsy
- The modified dental anxiety scale: UK general public population norms in 2008 with further psychometrics and effects of age
- Effectiveness and fabrication of mouthguards
- Informing the debate on oral health care for older people: a qualitative study of older people's views on oral health and oral health care

RESEARCH SUMMARIES

- 72 Summary of: 'A qualitative study examining the experience of primary care dentists in the detection and management of potentially malignant lesions. 1. Factors influencing detection and the decision to refer'
- 74 Summary of: 'A qualitative study examining the experience of primary care dentists in the detection and management of potentially malignant lesions. 2. Mechanics of the referral and patient communication'

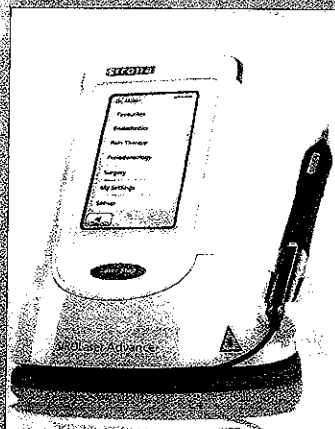
ONLINE RESEARCH PAPERS

- E3 A qualitative study examining the experience of primary care dentists in the detection and management of potentially malignant lesions. 1. Factors influencing detection and the decision to refer
P. R. Brocklehurst, S. R. Baker, P. M. Speight
DOI: 10.1038/sj.bdj.2010.54
- E4 A qualitative study examining the experience of primary care dentists in the detection and management of potentially malignant lesions. 2. Mechanics of the referral and patient communication
P. R. Brocklehurst, S. R. Baker, P. M. Speight
DOI: 10.1038/sj.bdj.2010.55

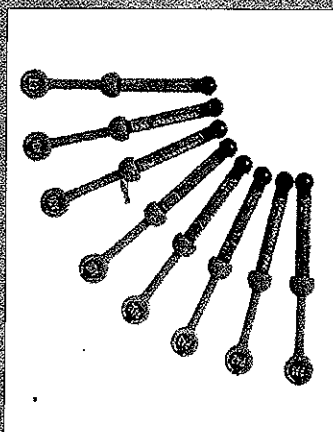
GENERAL

- 77 Dental aesthetics as an expression of culture and ritual
E. Labajo González, B. Perea Pérez, J. A. Sánchez Sánchez, M. Mar Robledo Acinas





User-friendliness and flexibility p86



Unique particle structure p88

CPD PROGRAMME

- 83 Answers to CPD questions included in the 19 December issue of the *BDJ*
- 84 CPD Article 1 – pages 61–64 and CPD Article 2 – pages 65–69

PRODUCT NEWS

- 85 Destroy damaging bacteria
Computerised probing station
Better oxygen exchange
Treating periodontal defects
- 86 User-friendliness and flexibility
Easy-to-grip surface
Improving periodontal health
Long-term stability
Optimum concentricity and strength
- 87 Brighter illumination to treatment area
Anti-inflammatory and antibiotic elements
Low-vibration scaling device
Ensure longevity of the final restoration
- 88 Reduce the risk of damaging a restoration
Accurate colour evaluation
Unique particle structure
Options for building bone
Short curing time

REVIEWS

- 89 The fluoride wars: how a modest public health measure became America's longest-running political melodrama
The art of computer-guided implantology
- 90 Oral and implant surgery

UCL EASTMAN DENTAL INSTITUTE

SHORT COURSES, MODULAR PROGRAMMES, CERTIFICATES, DIPLOMAS, MASTERS, SPECIALTY TRAINING, RESEARCH DEGREES, DCP TRAINING, DISTANCE AND ONLINE LEARNING



Eastman Continuing Professional Development
123 Gray's Inn Road, London WC1X 8WD
Tel: 020 7905 1234
cpd@eastman.ucl.ac.uk
www.eastman.ucl.ac.uk/cpd

eastman

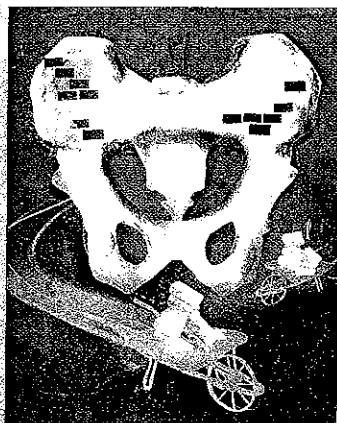
CONTINUING
PROFESSIONAL
DEVELOPMENT

POSTGRADUATE CERTIFICATE IN CONSCIOUS SEDATION

The course starts in May 2010 with six days of lectures and problem based learning followed by six months of practical training and a further 3 days of lectures in October. Course work will include a dissertation and formal assessments are an integral part of the programme.

The course is suitable for both dental and medical practitioners as well as hospital based clinicians from all specialities.

For further information please contact Course Administration Team
Tel: 020 7905 1234 Email: cpd@eastman.ucl.ac.uk



Iliac crest graft harvesting

Exhibition celebrates life of dental pioneer and first BDA President
p100Virtual dental school adviser
appointed p101

BDJ

BRITISH DENTAL JOURNAL
incorporating DENTAL BUSINESS

COVER IMAGE

ILIAC CREST GRAFT HARVESTING

The series of cover images featured in this volume of the Journal represent the 12 most highly cited papers published in the BDJ between 2004 and 2009. The image on the cover of this issue represents the paper 'An investigation of post-operative morbidity following iliac crest graft harvesting' by A. Joshi and G. C. Kostakis, which had been cited 28 times at the time of going to press.

Joshi A and Kostakis G C. An investigation of post-operative morbidity following iliac crest graft harvesting. Br Dent J 2004;196: 167-171.

Cover illustration by Danny Allison
www.dannyallison.co.uk

Citation data according to Scopus: www.scopus.com.

EDITORIAL

- 93 Just a minute
Stephen Hancocks OBE

LETTERS

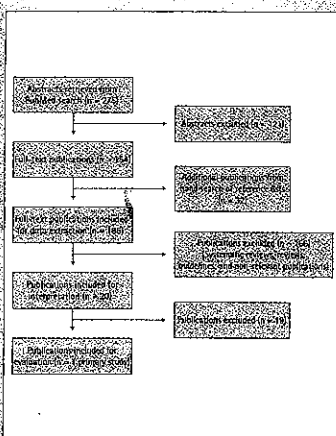
- 95 Hypertension screening
Mouthwash controversies
- 96 An unviable approach
Familiar forceps
Spiralling costs
Cavalier attitude
- 97 Internet caution
The NHS reality

NEWS

- 99 Mobile dental units launched to improve access to dentistry
- 100 Aberdeen Dental School opens
HTM 01-05 evidence under BDA scrutiny
Exhibition celebrates life of dental pioneer and first BDA President
- 101 Virtual dental school adviser appointed
New reviews of research evidence
New head appointed
- 102 Study highlights fluoridated toothpaste use in children
New annual prize for poetry and medicine



Pre-operative OPT: agenesia of a 45 p109



Trial flow of the number of included/excluded publications E6

PRACTICE

- 103 Evaluation of dental practitioners with special interest in minor oral surgery
A. Pau, S. Nanjappa, S. Diu
- 109 Autotransplantation of premolars
G. Mensink, R. van Merkesteyne

ABSTRACTS

- 113 A selection of abstracts of clinically relevant papers from other journals *John R. Radford*
Focus article. Evaluation of the research diagnostic criteria for temporomandibular disorders for the recognition of anterior disc displacement with reduction
Excessive gingival display – etiology, diagnosis and treatment modalities
Critical commentary 1. Evaluation of the research diagnostic criteria for temporomandibular disorders for the recognition of anterior disc displacement with reduction
Full-mouth treatment vs. the conventional staged approach for periodontal infection control

RESEARCH SUMMARIES

- 114 Summary of: 'Antibiotic prophylaxis in oral healthcare – the agreement between Swedish recommendations and evidence'
- 116 Summary of: 'Modelling workforce skill-mix: how can dental professionals meet the needs and demands of older people in England?'

EVIDENCE SUMMARY

- 119 Evidence summary: why is access to dental care for frail elderly people worse than for other groups?

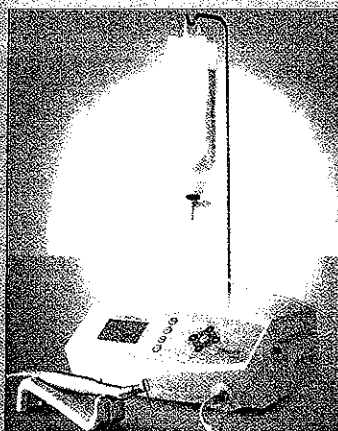
ONLINE RESEARCH PAPERS

- E5 Antibiotic prophylaxis in oral healthcare – the agreement between Swedish recommendations and evidence
E. Ellervall, E. Vinge, M. Rohlin, K. Knutsson
DOI: 10.1038/sj.bdj.2010.107
- E6 Modelling workforce skill-mix: how can dental professionals meet the needs and demands of older people in England?
VERIFIABLE CPD PAPER
J. E. Gallagher, E. R. Kleinman, P. R. Harper
DOI: 10.1038/sj.bdj.2010.106

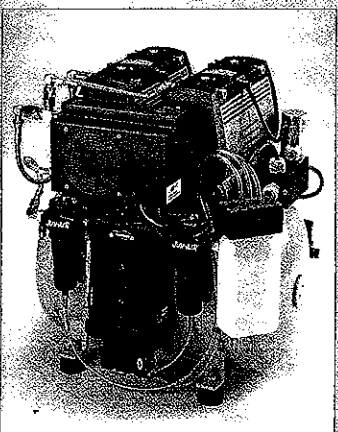
EDUCATION

- 123 Getting into medical school – a guide for dental graduates
T. Pepper, S. Tabiat-Pour
- 127 Evidence-informed dental student recruitment techniques
VERIFIABLE CPD PAPER
E. Kay, J. Bennett, P. Allison, L. R. Coombes





Optimum infection control p136



Compressors with low noise levels p138

CPD PROGRAMME

- 133 Answers to CPD questions included in the 9 January issue of the *BDJ*
- 134 CPD Article 1 – online article E6 and CPD Article 2 – pages 127-131

PRODUCT NEWS

- 135 Toothbrush given Pro-Expert rename
New administration solution
See your redesign in 3D
New dimension of control
- 136 Shop online for convenience
Welcoming surgery environment
Eliminate cross infection
Optimum infection control
Relieve peak-time morning rush
- 137 Adaptable dental unit
Solution for your hygiene requirements
Latest developments in dentistry online
Fully automatic mixing machine
- 138 Chair with flexible specification
Micro-technology for visual clarity
Compressors with low noise levels
Harness texting technology

REVIEWS

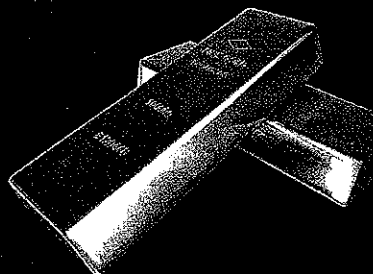
- 141 Invisible ceramic esthetic restorations
Minimally invasive treatment, arrest and control of periodontal diseases
- 142 Endodontic microbiology
Physical evaluation in dental practice

OBITUARIES

- 143 Gordon Felix Holmes
Noel Davies



Refining Direct Ltd



Deal direct & receive up to 3 times more!

- FREEPOST fully insured Special Delivery envelopes
- Payment dispatched within 24hrs
- Cash payment service available on request
- No processing charge

Waste and scrap are removed from hazardous & clinical waste

www.wastecrowns.co.uk Tel : 0870 240 4443

CLINICAL ORAL IMPLANTS RESEARCH

Volume 21 · Number 3 · March 2010

Contents

Original Articles

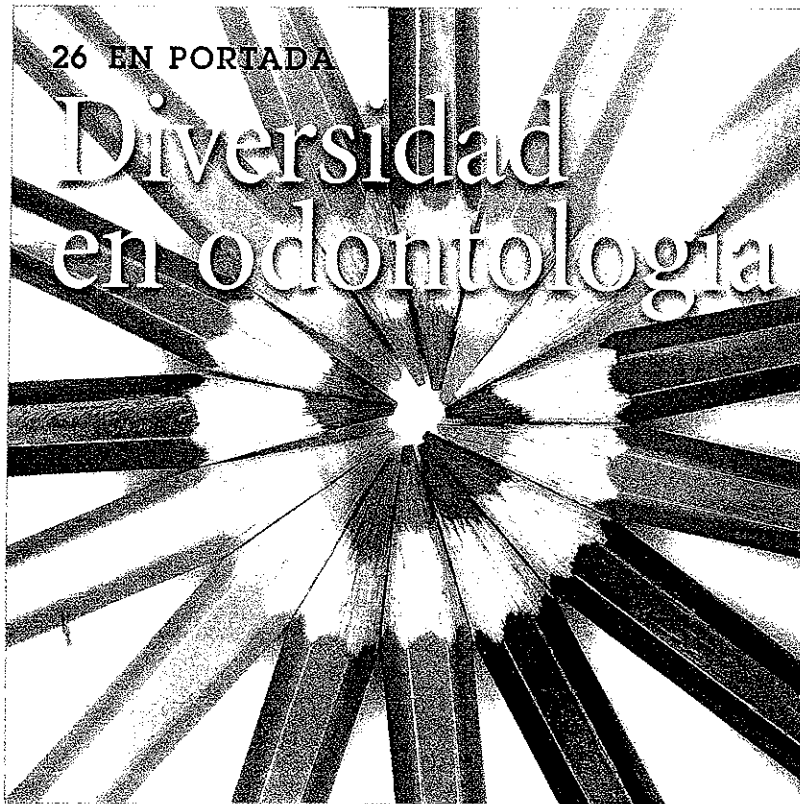
- Diagnosis of implant stability and its impact on implant survival: a prospective case series study 255 D. Rodrigo, L. Aracil, C. Martin & M. Sanz
- Novel ceramic bone replacement material CeraBall® seeded with human mesenchymal stem cells 262 T. Douglas, Q. Liu, A. Humpe, J. Wiltfang, S. Sivananthan & P. H. Warnke
- Healing of rabbit calvarial bone defects using biphasic calcium phosphate ceramics made of submicron-sized grains with a hierarchical pore structure 268 J.-W. Park, E.-S. Kim, J.-H. Jang, J.-Y. Suh, K.-B. Park & T. Hanawa
- Bactericidal effects of different laser systems on bacteria adhered to dental implant surfaces: an *in vitro* study comparing zirconia with titanium 277 I. Hauser-Gerspach, S. Stübinger & J. Meyer
- Early loading of implants with fixed dental prostheses in edentulous mandibles: 4.5-year clinical results from a prospective study 284 S. Schwarz, O. Gabbert, A. J. Hassel, M. Schmitter, C. Séché & P. Rammelsberg
- Transference of virtual planning and planning over biomedical prototypes for dental implant placement using guided surgery 290 V. N. Viegas, V. Dutra, R. M. Pagnoncelli & M. G. de Oliveira
- Evaluation of 316 narrow diameter implants followed for 5–10 years: a clinical and radiographic retrospective study 296 V. Arisan, N. Bölükbaşı, S. Ersanli & T. Özdemir
- Histological and histomorphometric evaluation of immediate implant placement on a dog model with a new implant surface treatment 308 J. L. Calvo-Guirado, A. J. Ortiz-Ruiz, B. Negri, L. López-Mari, C. Rodriguez-Barba & F. Schlottig
- Peri-implant parameters in head and neck reconstruction: influence of extraoral skin or intraoral mucosa 316 Y.-D. Kwon, J. Karbach, W. Wagner & B. Al-Nawas
- Biological properties of an anti-bacterial membrane for guided bone regeneration: an experimental study in rats 321 J. Zhang, Q. Xu, C. Huang, A. Mo, J. Li & Y. Zuo
- Microbial leakage through the implant–abutment interface of Morse taper implants *in vitro* 328 J. P. Aloise, R. Curcio, M. Z. Laporta, L. Rossi, A. M. Á. da Silva & A. Rapoport
- Modulation of platelet activation and initial cytokine release by alloplastic bone substitute materials 336 M. O. Klein, P. W. Kämmerer, T. Scholz, M. Moergel, C. M. Kirchmaier & B. Al-Nawas
- The use of autologous venous blood for maxillary sinus floor augmentation in conjunction with sinus membrane elevation: an experimental study 346 H.-R. Kim, B.-H. Choi, F. Xuan & S.-M. Jeong
- Osseointegration of one-piece zirconia implants compared with a titanium implant of identical design: a histomorphometric study in the dog 350 F. P. Koch, D. Weng, S. Krämer, S. Biesterfeld, A. Jahn-Eimermacher & W. Wagner

This journal is available online at Wiley InterScience.
Visit <http://interscience.wiley.com/journal/clr> to search
the articles and register for table of contents e-mail alerts.

Clinical Oral Implants Research is covered by Current Contents®/Clinical Medicine,
the Science Citation Index®, and SciSearch®.

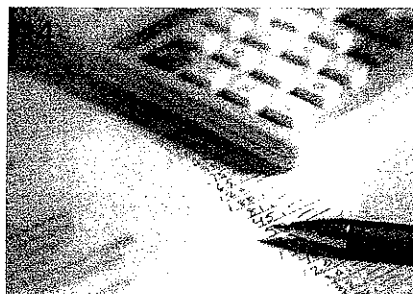
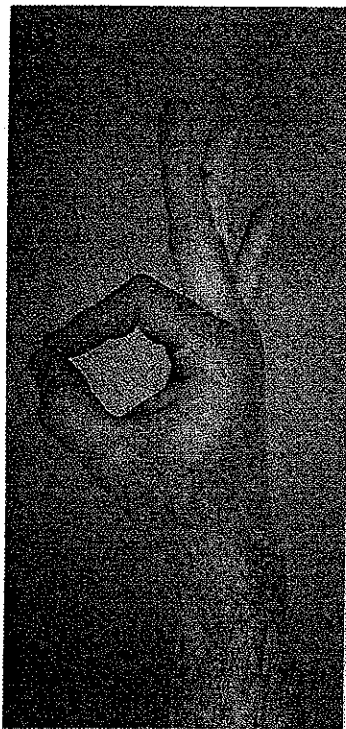
Printed in Malaysia
ISSN:0905-7161

11



26 EN PORTADA

Diversidad en odontología



Carta del director

4 Solidaridad con Haití

ACTUALIDAD

6 Expodental prepara su 11ª edición

8 56ª Reunión de la SEDO • VIII Congreso de la Sociedad Española de Cirugía Bucal • Nuevas citas de formación con Klockner

10 Beatriz Lahoz, presidenta del Colegio Oficial de Dentistas de Navarra • Voco recibe un "excelente" del instituto americano Dental Advisor

12 El 33% de los españoles aún teme al dentista • Premios Colgate para estudiantes de pregrado

13 Premio "Simó i Virgili 2009" • Entrega de la Beca Proclinic • Formación continua Ivoclar Vivadent

LA VISIÓN DEL EXPERTO

Inversiones

14 Bonos convertibles: ¿es oro todo lo que reluce?

Gestión profesional

16 Quejas y reclamaciones: ¡actúe positivamente!

PRIMERA PÁGINA

Aplicaciones del modelo médico a la odontología

18 Ventajas del modelo médico para sus pacientes

Balances y facturas

24 Un sistema que evitará errores de facturación

EN PORTADA

Diversidad en odontología

26 Su clínica debe evolucionar con la sociedad

OPERATORIA DENTAL

Distracción ósea en el maxilar sobre injerto de cresta ilíaca previo y rehabilitación con implantes

32 Nuevos tratamientos para rehabilitación de maxilares con pérdidas dentarias

SU CONSULTA

Todos los caminos llevan al higienista

37 La filosofía de excelencia en los cuidados continuados

ENTORNO

41 Internet

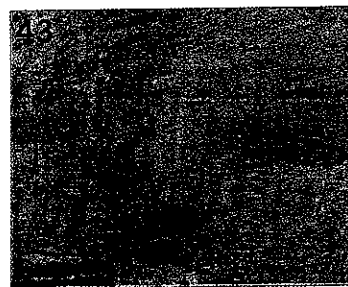
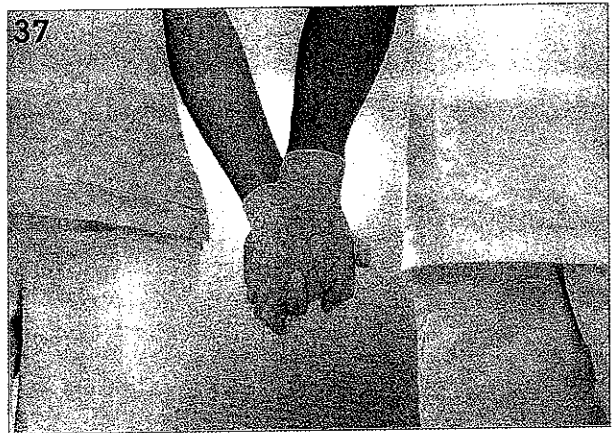
43 Cultura

44 Golf

NOVEDADES

46 Adhesivos de grabado total de Ivoclar Vivadent • Perfect Bleach: el blanqueamiento dental efectivo y suave de Voco

47 Membrana de colágeno de origen porcino de Klockner • Ancar incorpora la tecnología Touch Screen • Colgate presenta su pasta con L-Arginina para dientes sensibles



EN NUESTRA WEB

dental practice es

Participe en las encuestas de Dental Practice a través de nuestra página web.

Su opinión sobre los temas más candentes de la profesión resulta muy importante para nosotros, ya que contribuirá a conocer mejor la realidad de la odontoestomatología en nuestro país.

¿Se ha adaptado su clínica a la creciente diversidad demográfica de nuestra sociedad?

DENTAL PRACTICE no hace necesariamente suyas las opiniones vertidas en los artículos firmados.

DENTAL PRACTICE Edición española es una publicación de Spanish Publishers Associates (SPA), Antonio López, 249 (1º). 28041 Madrid, editada en colaboración con Advanstar Communications Inc.

© Copyright 2010 by Advanstar Communications Inc. All rights reserved. No part of this publication may be reproduced or transmitted in any form or by means, electronic or mechanical including by photocopy, recording or information storage and retrieval without permission in writing from the publisher, Advanstar Communication Inc.

© Copyright 2010 Edición española, Spanish Publishers Associates.

endodoncia

Sumario

Volumen 27 Número 4 OCTUBRE-DICIEMBRE 2009

NOTA DE LA PRESIDENTA <i>R.Mª Suárez Feito</i>	173
NOTA DEL EDITOR <i>J. Pumarola</i>	174
ARTÍCULO INVESTIGACIÓN Evaluación de la conformación de conductos curvos simulados con los sistemas ProTaper Universal, Light Speed Extra y Mtwo <i>F. Balandrano Pinal, R. Hilú, A. Pérez</i>	175
Comparación de dos técnicas de instrumentación en conductos radiculares estrechos y curvos de la raíz mesial de molares inferiores, <i>in vitro</i> <i>S.B. Finten de Tarallo</i>	181
Espesores de dentina/cemento en conductos curvos instrumentados con sistemas rotatorios <i>L.E. Leonardi, D.M. Atlas, V. Cuezco, G. Raiden</i>	190
CASO CLÍNICO Incisivo central superior con necrosis y cese del desarrollo, a 65 años vista <i>C. Fuentes Candelas</i>	195
REVISIÓN BIBLIOGRÁFICA Mejorando el sellado coronario en Endodoncia <i>O. Zmener</i>	201
COLLEAGUES FOR EXCELLENCE Eliminando el dolor de la odontología restauradora y la endodoncia: ideas y opciones terapéuticas actuales para ayudar a los pacientes a conseguir una anestesia profunda <i>American Association of Endodontists</i>	210
RESÚMENES	217
AGENDA PROFESIONAL	220
INDICE DE AUTORES	228
INDICE DE MATERIAS	231

- E. Thickett (et al.) **A randomized clinical trial of thermoplastic retainer wear** P. 1-5
- M. Dinçer (et al.) **Effects of thermoplastic retainers on occlusal contacts** P. 6-10
- S. I. Ramoglu (et al.) **Maxillary expansion in the mixed dentition: rapid or semi-rapid?** P. 11-8
- G. Kurt, (et al.) **Mandibular asymmetry in cleft lip and palate patients** P. 19-23
- F. Del Guercio, (et al.) **A cephalometric intercentre comparison of patients with unilateral cleft lip and palate at 5 and 10 years of age** P. 24-27
- M. Lerstøl, (et al.) **Long-term stability of dentoalveolar and skeletal changes after activator-headgear treatment** P. 28-35
- D. D. Koletsis (et al.) **Cervical vertebrae anomalies in orthodontic patients: a growth-based superimpositional approach** P. 36-42
- J. Rusanen, (et al.) **Quality of life in patients with severe malocclusion before treatment** P. 43-48
- L. Perillo, (et al.) **Prevalence of orthodontic treatment need in southern Italian schoolchildren** P. 49-53
- C. McNamara, (et al.) **An evaluation of clinicians' choices when selecting archwires** P. 54-59
- I. Intachai, (et al.) **Chondroitin sulphate (WF6 epitope) levels in peri-miniscrew implant crevicular fluid during orthodontic loading** P. 60-65
- A. Enomoto, (et al.) **Effects of mastication on mandibular growth evaluated by microcomputed tomography** P. 66-70
- E. S. J. Abu Alhaja, (et al.) **Maximum occlusal bite forces in Jordanian individuals with different dentofacial vertical skeletal patterns** P. 71-77
- T. Uysal, (et al.) **Are nano-composites and nano-ionomers suitable for orthodontic bracket bonding?** P. 78-82
- G. Pessôa Cerveira, (et al.) **Degree of conversion and hardness of an orthodontic resin cured with a light-emitting diode and a quartz-tungsten-halogen light** P. 83-86
- B.t Kukiattrakoon (et al.) **Shear bond strength of ceramic brackets with various base designs bonded to aluminous and fluorapatite ceramics** P. 87-93
- N. Pandis, (et al.) **Salivary *Streptococcus mutans* levels in patients with conventional and self-ligating brackets** P. 94-99
- C. Suárez (et al.) **The effect of constant height bracket placement on marginal ridge levelling using digitized models** P. 100-105
- P. A. Sanjideh, (et al.) **Tooth movements in foxhounds after one or two alveolar corticotomies** P. 106-113

MIRADA EN EL ESPEJO

- "La Odontología en la pintura satírica inglesa de los siglos XVIII y XIX (III): James Gillray", por el Dr. Julio González Iglesias **52**

ESPECIAL EXPODENTAL 2010

- Entrevista con la directora de Expodental 2010, D.ª María José Sánchez **69**

ENTREVISTA

- Con el profesor Mariano Sanz Alonso, decano de Odontología de la Universidad Complutense de Madrid **80**

CIENCIA

- "El fenómeno de las técnicas de baja fricción: Últimos avances", por el Dr. Álvaro Larriu **88**
- "Estudio clínico de las agenesias en una población infantil", por la Dra. Isabel Calvo Hernández y cols. **116**
- "Comparativa de dos superficies de implantes relacionada con la reabsorción del hueso cresta", por la Dra. Cristina Pérez Sánchez y col. **128**
- "Planificación y tratamiento de un caso complejo con cirugía mínimamente invasiva", por la Dra. E. Domínguez Moreno y cols. **146**

LABORATORIO

- "Un caso de clase: desarrollo de una prótesis parcial removible metálica", por D.ª Juana María Carabal Sobrino **154**

FICHAS

- "Atrofia de maxilar superior: tratamiento con injerto de cresta iliaca e implantes cigomáticos. Caso clínico", por el Dr. Luis Cuadrado y cols. **172**

ORTOGNÁTICA Y ORTODONCIA. CASO CLÍNICO

- "Ortodoncia y cirugía ortognática del paciente con Clase II dolicofacial: cambio de plano oclusal", por la Dra. Fe Serrano Madrigal y cols. **180**

ODONTOLOGÍA FORENSE

- "Métodos de imagen en Odontología Forense", por la Dra. M.ª del Mar Robledo Acinas **199**

INFORME

- "La tecnología como impulso para 2010", por D.ª Maribel Aragonese **208**

GESTIÓN

- "La aceptación de tratamientos: 10 factores determinantes", por D. David Téllez **212**

TRIBUNA

- "La confianza", por el Dr. Manuel Peleato **214**

INTERNET PARA LA CLÍNICA

- "El día a día en la clínica dental", por D. Enrique Pizarro y col. **216**

TIEMPO LIBRE

- "Ya está aquí el Xacobeo 2010", por D. Enrique Sancho. **218**

FOTOGRAFÍA DIGITAL

- Por D. Marcel Martín **224**

EMPRESAS

- **226**

PRODUCTOS

- **242**

IMPLANT DENTISTRY. VOL.19 NÚM.1 (JANUARY 2010)

Editorial. Sipping Through a Straw. Perel, Morton L. pg. 1

Guided Bone Regeneration Using Nonexpanded Polytetrafluoroethylene Membranes in Preparation for Dental Implant Placements-A Report of 420 Cases. Barboza, Eliane Porto DMD, (et al.) pg. 2-7

Screw- Versus Cement-Retained Implant Restorations: Current Concepts. Lee, Angie (et al.) pg. 8-15

Migrated Maxillary Implant Removed via Semilunar Hiatus by Transnasal Endoscope. Kitamura, Akira (et al.) pg. 16-20

Placement of Implant After Bone Graft Using J Block Allograft. Kim, Su-Gwan (et al.) pg. 21-28

CTX Biochemical Marker of Bone Metabolism. Is It a Reliable Predictor of Bisphosphonate-Associated Osteonecrosis of the Jaws After Surgery? Part II: A Prospective Clinical Study. Lee, Cameron Y. S. (et al.) pg. 29-38

Finite Element Analysis of 2 Immediate Loading Systems in Edentulous Mandible: Rigid and Semirigid Splinting of Implants. Teixeira, Marcelo Fontes (et al.) pg. 39-49

Freedom of In-Ceram Ceramic Blank Abutments Before and After Infiltration. Aramouni, Philippe DCD, (et al.) pg. 50-56

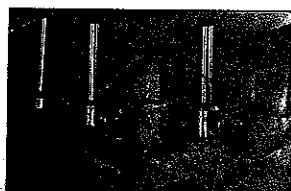
Smoking, Diabetes Mellitus, Periodontitis, and Supportive Periodontal Treatment as Factors Associated With Dental Implant Survival: A Long-Term Retrospective Evaluation of Patients Followed for Up to 10 Years. Anner, Rachel (et al.) pg. 57-64

Implant Restoration of Partially Edentulous Ridges: A Review of 121 Nigerian Patients. Akeredolu, Patricia A. (et al.) pg. 65-72

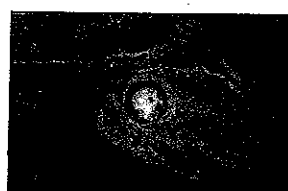
Implant Survival Rates in a Condensed Surgical and Prosthetic Training Program for General Practitioners in Dental Implants. Hussaini, Souheil (et al.) pg. 73-80

Success Rate of Immediate Implants Placed and Restored by Novice Operators. Vidal, Ricardo (et al.) pg. 81-90

- 991 Adult Stem Cells Derived from Human Maxillary Sinus Membrane and Their Osteogenic Differentiation**
Sang-Woo Kim/Il-Kyu Lee/Kyoung-In Yun/Chang-Hyun Kim/Je-Uk Park
- 999 Biomechanical Evaluation of Implant Placement in the Reconstructed Mandible**
Tomohisa Nagasao/Junpei Miyamoto/Hiromasa Kawana
- 1006 Quantifying the Influence of Bone Density and Thickness on Resonance Frequency Analysis: An In Vitro Study of Biomechanical Test Materials**
Thibaut Bardyn/Philippe Gédet/Wock Hallermann/Philippe Büchler
- 1015 Meta-analysis of Methods Used to Assess Implant Stability**
Murat Cavit Cehreli/Durdu Karasoy/Kivanc Akca/Steven E. Eckert
- 1033 Divergence Correction Associated with Implant Placement: A Radiographic Study**
Yaniv Mayer/Eli E. Machtei
- 1040 Stress Analysis in Simulation Models With or Without Implant Threads Representation**
Wirley Gonçalves Assunção/Érica Alves Gomes/Valentim Adelino Ricardo Barão/Edson Antonio Capello de Sousa
- 1045 The Effect of Different Screw-Tightening Techniques on the Stress Generated on an Internal-Connection Implant Superstructure**
Jung-Han Choi/Young-Jun Lim/Chang-Whe Kim/Myung-Joo Kim
- 1054 Evaluation of the Osteogenic Potential in Experimental Defects, With and Without Bone Marrow, in the Rabbit Tibia: A Pilot Study**
Alexander Veis/Konstantinos Kougias/Anastasios Tsirlis/Nikolaos Parris/Christina Papadopoulou/George E. Romanos
- 1061 In Vitro Evaluation of Reverse Torque Value of Abutment Screw and Marginal Opening in a Screw- and Cement-Retained Implant Fixed Partial Denture Design**
Seok-Gyu Kim/Jae-Uk Park/Jae-Heon Jeong/Chang Bae/Tae-Soo Bae/Winston Chee
- 1068 The Effects of Growth Hormone on the Initial Bone Formation Around Implants**
Gerardo Gómez-Moreno/Antonio Cutando/Carlos Arana/Cecilia Vander Worf/Javier Guardia/Fernando Muñoz/Mónica Lopez-Peña/Jean Stephenson
- 1074 Influence of Osteopenia in Autogenous Bone Graft Healing With or Without Expanded Polytetrafluoroethylene Membranes: Histologic and Histomorphometric Study in Rats**
Rodrigo Dias Nascimento/Paula Elaine Cardoso/Andréa C. De Marco/Luiz Antonio Pugliesi Alves de Lima/Maria Aparecida Neves Jardim



Page 1034



Page 1055



Page 1085



Page 1131

CLINICAL APPLICATIONS

- 1083 Mechanical Stability of Immediately Loaded Implants with Various Surfaces and Designs: A Pilot Study in Dogs**
 Jörg Neugebauer/Michael Weinländer/Vojislav Lekovic/Karl-Heinz Linne von Berg/
 Joachim E. Zoeller
- 1093 Clinical Histology of Microimplants Placed in Two Different Biomaterials**
 Christer Lindgren/Lars Sennerby/Arne Mordenfeld/Mats Hallman
- 1101 Evaluation of the Effect of Tumor Necrosis Factor-Alpha Gene Polymorphism on the Risk of Peri-implantitis: A Case-Control Study**
 Patricia R. Cury/Verônica V. Horewicz/Daniel S. Ferrari/Rui Brito Jr/
 Wilson R. Sendyk/Poliana M. Duarte/Jamil A. Shibli
- 1106 Immediate Functional Loading in the Maxilla Using Implants with Platform Switching: Five-year Results**
 George E. Romanos/George-Hubertus Nentwig
- 1113 A Retrospective Study of the Survival of Smooth- and Rough-Surface Dental Implants**
 Ayman A. Balshe/Daniel A. Assad/Steven E. Eckert/Sreenivas Koka/Amy L. Weaver
- 1119 Evaluation of Survival and Success Rates of Dental Implants Placed at the Time of or After Alveolar Ridge Augmentation with an Autogenous Mandibular Bone Graft and Titanium Mesh: A 3- to 8-year Retrospective Study**
 Giuseppe Corinaldesi/Francesco Pieri/Licia Sapigni/Claudio Marchetti
- 1129 The Use of Extraoral Implants for Distal-Extension Removable Dentures: A Clinical Evaluation Up to 8 Years**
 Roger Minoretti/Albino Triaca/Nikola Saulacic
- 1138 Nasal Suction Technique for Maxillary Sinus Floor Elevation: A Report of 24 Consecutive Patients**
 Cemal Ucer
- 1144 Augmentation of the Mandible via a "Tent-Pole" Procedure and Implant Treatment in a Patient with Type III Osteogenesis Imperfecta: Clinical and Histologic Considerations**
 Karin Wannfors/Carina Johansson/Karl Donath
- 1149 Use of the Coronoid Process as a Donor Site for Sinus Augmentation: A Case Report**
 Young-Kyun Kim/Jung-Won Hwang/Hyo-Jung Lee/Pil-Young Yun
- 1153 Peripheral Giant Cell Granuloma Associated with Dental Implants: A Rare Case Report**
 Feyza Otan Özden/Bora Özden/Murat Kurt/Kaan Gündüz/Ömer Günhan

TECHNOLOGY & CASE REPORTS

DEPARTMENTS

971 Editorial
 985 Thematic Abstract Review

1160 Meetings