

PRESENTACIÓ

El propòsit principal d'un Butlletí de Sumaris és la màxima difusió de la informació actualitzada que proporcionen les publicacions periòdiques. El Butlletí de Sumaris del COEC aplega, mensualment, els sumaris de les revistes d' Odontostomatologia i de matèries afins que es reben a la Biblioteca.

En cada número es dona la relació dels títols d' aquestes revistes a continuació de la presentació. Els sumaris estan ordenats, al Butlletí, alfabèticament pel títol, essent també accessibles per la matèria general de la revista mitjançant l'Index de Matèries del Butlletí.

Aquesta eina bibliogràfica permet aproximar el perfil d'interés del lector al contingut de les principals publicacions periòdiques d'Odontostomatologia, sense necessitat d'estar-hi subscript. Totes les revistes relacionades es troben a la Biblioteca, de manera que l'usuari pot demanar, si li interessa, còpia de qualsevol dels articles citats.

REVISTES INCLOSES EN AQUEST BUTLLETÍ

- American Jnl. of Orthodontics & Dentofacial Orthopedics
- Angle Orthodontist
- Avances en Odontostomatología
- British Dental Journal
- Clinical Oral Implant Research
- Community Dentistry & Oral Epidemiology
- Dental Abstracts
- Dental Materials
- European Jnl. of Orthodontics
- Implant Dentistry
- Impresiones
- International Journal of Oral and Maxillofacial Surgery
- International Journal of Prosthodontics
- Journal of the American Dental Association
- Journal of Clinical Periodontology
- Journal of Prosthetic Dentistry
- Labor Clínica Dental
- Operative Dentistry
- Oral Surgery, Oral Medicine, Oral Pathology
- Revista Española Odontostomatológica de Implantes
- Revista Internacional de Odontología Restauradora & Periodoncia
- Revue d'Orthopédie Dentofaciales

MATERIA	TITOL DE LA REVISTA	pag
BIBLIOGRAFIA DENTAL	Dental Abstracts Vol.55 Núm.6 (deseembre 2010)	11
CIRURGIA ORAL	Intern. Jnl. Oral & Maxil.Surgery Vol.39 Núm. 12 (deseembre 2010)	18
	Oral Surgery, Oral Medicine, Oral Pathology Vol. 110 Núm.6 (deseembre 2010)	27
COL. PROFESSIONALS	Impresiones Núm.52 (deseembre 2010)	17
IMPLANTS DENTALS	Clinical Oral Implants Research. Vol.21 Núm.12 (deseembre 2010)	9
	Implant Dentistry. Vol. 19 Núm.6 (deseembre 2010)	16
	Revista Española Odontoestom. De Implantes. Vol.18 Núm.2 (2010)	30
MATERIALS DENTALS	Dental materials. Vol.26 Núm. 12 (deseembre 2010)	13
ODONTOSTOMATOLOGIA	Avances en Odontoestomatología Vol.26 Núm. 6(deseembre 2010)	6
	British Dent. Jnl. Vol.209 Núm. 10 (nov. 2010)	7
	Community Dent. & Oral Epidemiol. Vol.38 Núm.6 (deseembre 2010)	10
	JADA. Ed Esp. Vol.5 Núm.6 (deseembre 2010)	22
ODONT. CONSERVADORA	Operative Dentistry. Vol.35 Núm.6 (deseembre 2010)	26
	Rev. Int. Odontol. Restauradora & Period. Vol.14 Núm.4 (2010)	31
ORTODÓNIA	American Jnl. Of Orthod. Vol.138 Núm.6 (deseembre 2010)	1
	Angle Orthodontist. Vol.80 Núm.6 (nov. 2010)	4
	European Jnl. of Orthodontics Vol.32 Núm.6 (deseembre 2010)	14
	Revue d'Orthopedie Dentofaciale Vol.44 Núm.4 (deseembre 2010)	32
PERIODÓNIA	Jnl. of Clinical Perio. Vol.37 Núm.12 (deseembre 2010)	23
	Rev. Int. Odontol. Restauradora & Period. Vol.14 Núm.4 (2010)	31
PRÒTESI DENTAL	Intern. Jnl. Prosthodontics. Vol.23 Núm.6 (2010)	20
	Journal of Prosthetic Dentistry. Vol.104 Núm.6 (deseembre 2010)	24
	Labor Clínica Dental Vol. 11 Núm.3 (2010)	25

American Journal of Orthodontics and Dentofacial Orthopedics
Volume 138(6) December 2010

Reflections on a Decade of Change. pg. 678-682 Turpin, David L. Editorial
Changing of the guard: A look at the past. pg. 683 Kokich, Vincent G. Editorial
Unicystic ameloblastoma: a case of mistaken identity. pg. 684-685 Ide, Fumio Letter
Author's response. pg. 685-686 Tanaka, Orlando Motohiro
Editor's response. pg. 686 Turpin, David L.
Stability of lateral open bite and myofunctional therapy. pg. 686 Doshi, Umal H. Letter
Authors' response. pg. 687 Janson, Guilherme; Freitas, Karina; Cabrera, Marise
Lateral open-bite treatment and gingival health. pg. 687 Rafiee, Rafiel M. Letter
Authors' response. pg. 687-688 Janson, Guilherme; Freitas, Karina; Cabrera, Marise
Authors' response. pg. 688 Janson, Guilherme; Araki, Janine; Barros, Sergio Estelita
Asymmetric elastics for Class III subdivision. pg. 688 Speck, Morton Letter
Conflicts of interest. pg. 688-689 Blackwood, H. O. III Letter
Correction. pg. 689

White spot lesions: Prevention and treatment. pg. 690-696 Guzman-Armstrong, S.;
Chalmers, J.; Warren, J. J.

Earn 3 hours of CE credit. pg. 697e1-697e2 Rennert, Michael

Orthodontic appliance preferences of children and adolescents. pg. 698e1-698e12
Walton, D. K. ; Fields, H. W. ; Johnston, W. M.

Recovery after third-molar surgery: The effects of age and sex. pg. 700e1-700e8
Phillips, C.; Gelesko, S.; Proffit, W. R.

Numeric simulations of en-masse space closure with sliding mechanics. pg. 702e1-702e6
Kojima, Y.; Fukui, H.

Canine substitution for missing maxillary lateral incisors: The influence of canine
morphology, size, and shade on perceptions of smile attractiveness. pg. 705e1-705e9
Brough, E.; Donaldson, A. N.; Naini, F.B.

Changes in the pharyngeal airway space and hyoid bone position after mandibular setback
surgery for skeletal Class III jaw deformity in Japanese women. pg. 708e1-708e10
Kitahara, T.; Hoshino, Y.; Maruyama, K.

Relationship between degree of malocclusion and occlusal interference in mice that spontaneously develop anterior transverse crossbite. pg. 710e1-710e5

Tsakamoto, Y.; Kajii, T. S.; Sugawara-Kato, Y.

In-vitro evaluation of various treatments to prevent demineralization next to orthodontic brackets. pg. 712e1-712e7 Behnan, S. M. ; Arruda, A. O.; Gonzalez-Cabezas, C.

Martensitic transformation of austenitic stainless steel orthodontic wires during intraoral exposure. pg. 714e1-714e5 Izquierdo, P.P. ; de Biasi, R. S. ; Elias, C. N.

Success rate of anterior open-bite orthodontic-orthognathic surgical treatment. pg. 716-719 Jensen, U. ; Ruf, S.

Long-term observation of autotransplanted teeth with complete root formation in orthodontic patients. pg. 720-726 Watanabe, Y. ; Mohri, T.; Takeyama, M.

Repair of root resorption 4 and 8 weeks after application of continuous light and heavy forces on premolars for 4 weeks: A histology study. pg. 727-734

Cheng, L. L. ; Turk, T.; Elekdag-Turk, S.

Effect of bracket bonding on nanomechanical properties of enamel. pg. 735-740

Iijima, M.; Muguruma, T.; Brantley, W. A.

Effects of staining solutions on the discoloration of orthodontic adhesives: An in-vitro study. pg. 741-746 Corekci, B. ; Irgin, C.; Malkoc, S.

Three-dimensional analysis of the tooth movement and arch dimension changes in Class I malocclusions treated with first premolar extractions: A guideline for virtual treatment planning. pg. 747-757 Cho, M.-Y.; Choi, J.-H. ; Lee, S.-P.

Novel method of 3-dimensional soft-tissue analysis for Class III patients. pg. 758-769

Bozic, M.; Kau, C.H.; Richmond, S.

Tooth movement after orthodontic treatment with 4 second premolar extractions. pg.

770-777 Chen, K.; Han, X.; Huang, L.

Bone volume, tooth volume, and incisor relapse: A 3-dimensional analysis of orthodontic stability. pg. 778-786 Chaison, J.B. ; Chen, Curtis S.K. ; Herring, S. W.

Little's irregularity index: Photographic assessment vs study model assessment. pg. 787-794 Almasoud, N.; Bearn, D.

An examination of proportional root lengths of the mandibular canine and premolars near the time of eruption. pg. 795-803 Smith, S. L. ; Buschang, P. H.

Orthosurgical treatment including anchorage from a palatal implant to correct an infraoccluded maxillary first molar in a young adult. pg. 804-809
Rosner, D.; Becker, A.; Casap, N.

Molar distalization with a partially integrated mini-implant to correct unilateral Class II malocclusion. pg. 810-819 Chung, K.-R.; Kim, S.-H.; Chaffee, M. P.

Orthodontic-prosthetic treatment of an adult with a severe Class III malocclusion. pg. 820-828 Maruo, H.; Maruo, I. T.; Saga, A.

Treatment of a severely ankylosed central incisor and a missing lateral incisor by distraction osteogenesis and orthodontic treatment. pg. 829-838
Chang, H.; Chang, Y.-L.; Chen, H.-L.

Timely relocation of mini-implants for uninterrupted full-arch distalization. pg. 839-849
Chung, K.-R.; Choo, H. ; Kim, S.-H.

Identification and prevention of digital forgery in orthodontic records. pg. 850-857
Madhan, B. ; Gayathri, H.

A few good questions. pg. 858-860 Jerrold, L.

Lingual orthodontics. pg. 861 Jacobson, Alex Abstract

The

ANGLE ORTHODONTIST

An International Journal of Orthodontics and Dentofacial Orthopedics since 1930

Volume 80, Number 6, November 2010

What's New in Dentistry

- 993 Latest Research Reports from the Dental Literature
Vincent Kokich

Original Articles

- 995 Change in soft tissue nasal widths associated with rapid maxillary expansion in prepubertal and postpubertal subjects
Bret M Johnson, James A McNamara, Jr, Roger L Bandeen, Tiziano Baccetti
- 1002 Maxillary first molar agenesis and other dental anomalies
Ryota Abe, Toshiya Endo, Shohachi Shimooka
- 1010 Cephalometric craniofacial features in Saudi parents and their offspring
Tina D AlKhudairi, Eman A AlKofide
- 1018 Change in dental pulp parameters in response to different modes of orthodontic force application
Rita Veberiene, Dalia Smailiene, Nomeda Baseviciene, Adolfas Toleikis, Vita Machiulskiene
- 1023 Locating the center of resistance of maxillary anterior teeth retracted by Double J Retractor with palatal miniscrews
Hyoung-Jun Jang, Won-Jong Roh, Bo-Hoon Joo, Ki-Ho Park, Su-Jung Kim, Young-Guk Park
- 1029 Effects of CO₂ laser debonding of a ceramic bracket on the mechanical properties of enamel
Masahiro Iijima, Yoshitaka Yasuda, Takeshi Muguruma, Itaru Mizoguchi
- 1036 Impulse debracketing compared to conventional debonding
Extent of enamel damage, adhesive residues and the need for postprocessing
Michael Knösel, Simone Mattysek, Klaus Jung, Reza Sadat-Khonsari, Dietmar Kubein-Meesenburg, Oskar Bauss, Dirk Ziebolz
- 1045 Short-term postorthodontic changes in the absence of retention
Nadia Lyotard, Mark Hans, Suchitra Nelson, Manish Valiathan
- 1051 Bone inductive proteins to enhance postorthodontic stability
Ali H Hassan, Ariza Al-Hubail, Ahmad Ali Al-Fraidi
- 1061 Sagittal mandibular development effects on the dimensions of the awake pharyngeal airway passage
Ashok Kumar Jena, Satinder Pal Singh, Ashok Kumar Utreja
- 1068 Effects of extraction versus non-extraction treatment on oropharyngeal airway volume
Manish Valiathan, Hakan El, Mark G Hans, Martin J Palomo
- 1075 Lower incisor inclination changes during Xbow treatment according to vertical facial type
Carlos Flores-Mir, Arden Young, Amira Greiss, Matthew Woynorowski, James Peng
- 1081 Enamel surface roughness after debonding
Comparison of two different burs
Sevinc Karan, Beyza Hancioglu Kircelli, Bahar Tasdelen
- 1089 Force and amount of resin composite paste used in direct and indirect bonding
Takeshi Muguruma, Yoshitaka Yasuda, Masahiro Iijima, Naohisa Kohda, Itaru Mizoguchi
- 1095 Bracket bond strength comparison between new unfilled experimental self-etching primer adhesive and conventional filled adhesives
Masahiro Iijima, Shuichi Ito, Takeshi Muguruma, Takashi Saito, Itaru Mizoguchi
- 1100 Torsional superelasticity of NiTi archwires
Myth or reality?
Yves Bolender, Anne Vernière, Christophe Rapin, Marie-Pierryle Filleul
- 1110 Dimensional change over time of extended-storage alginate impression materials
Mary P Walker, Jason Burckhard, David A Mitts, Karen B Williams
- 1116 An orthodontic ora appliance
A randomized, controlled pilot study
Marie Marklund, Per Erik Legrell
- 1122 Crown-root ratio of permanent teeth in cleft lip and palate patients
Ghaida A Al-Jamal, Abdalla M Hazza'a, Ma'amon A Rawashdeh
- 1129 Development of a sustained fluoride delivery system
Olga Baturina, Eser Tufekci, Ozge Guney-Altay, Shadeed M Khan, Gary E Wnek, Steven J Lindauer
- 1136 Pulpal blood flow changes due to rapid maxillary expansion
Hasan Babacan, Cenk Doruk, A. Altug Bicakci

- 1141 **The relationship between personality traits, pain perception and attitude toward orthodontic treatment**
Elham Saleh Abu Alhaja, Abdalsalam AlDaikki, Mahmoud K Al-Omairi, Susan Nadeem Al-Khateeb
- 1150 **Influence of gender on office staff management in orthodontics**
Patrick B Holmes, Bhavna Shroff, Al M Best, Steven J Lindauer
- 1155 **Factors associated with long-term patient satisfaction**
Nair Galvão Maia, David Normando, Francisco Ajalmar Maia, Maria Ângela Fernandes Ferreira, Maria do Socorro Costa Feitosa Alves
- 1159 **Influence of lower facial height changes on frontal facial attractiveness and perception of treatment need by lay people**
Selin Kale Varlik, Evren Demirbaş, Metin Orhan
-

Case Reports

- 1165 **Maxillary advancement using distraction osteogenesis with intraoral device**
Yoko Takigawa, Setsuko Uematsu, Kenji Takada
- 1176 **Skeletal Class III and open bite treated with bilateral sagittal split osteotomy and molar intrusion using titanium screws**
Rena Togawa, Shoichiro Iino, Shouichi Miyawaki
-

Editorial

- 1185 **Crawlers in our life**
Robert J Isaacson
-

Letters From Our Readers

i

2010 Reviewers List

iii

Author Index to Volume 80

vi

AVANCES en odontología

Vol. 26 - Núm. 6 - NOVIEMBRE-DICIEMBRE 2010

SUMARIO

A nuestros lectores	285
Paracoccidiodomicosis: Manifestaciones orales e implicaciones sistémicas JANETE GRANDO L, SOMACARRERA PÉREZ ML, LUCKMANN FABRO SM, MEURER MI, RIET CORREA RIVERO E, MODOLO F	287
Osteomielitis crónica supurativa en el maxilar superior: reporte de un caso clínico SOUZA LN, SOUZA ACRA, DE ALMEIDA HC, GÓMEZ RS, LÓPEZ ALVARENGA R	295
Osteoquimionecrosis de los maxilares asociada a la administración de bifosfonatos por vía endovenosa: A propósito de seis casos MASIP ZURRIAGA E, HERRERO FONOLLOSA M, BERINI AYTÉS L, GAY ESCODA C	301
Infección por herpes virus 1-2 como manifestación del síndrome de reconstitución inmune. Actualización y reporte de un caso de difícil diagnóstico CASARIEGO ZULEMA J, BUTLER T, CABRINI M	313
Ácido tricloroacético, una opción terapéutica en la hiperplasia epitelial focal. Presentación de un caso HARRIS RICARDO J, REBOLLEDO COBOS M, CAMACHO CHALJUB F, CARMONA LORDUY M, DÍAZ CABALLERO A	323
ÍNDICE GENERAL DE ARTÍCULOS	329

ACEPTADA EN EL ÍNDICE BIBLIOGRÁFICO ESPAÑOL EN CIENCIAS DE LA SALUD (IBECS) Y EN SCIELO.

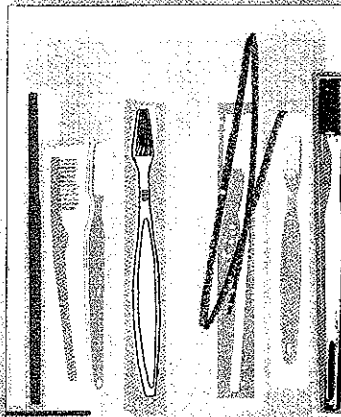
LAS DIRECCIONES DE INTERNET PARA ENCONTRAR LAS REVISTAS INDEXADAS SON LAS SIGUIENTES:

AVANCES EN ODONTOESTOMATOLOGÍA

http://scielo.isciii.es/scielo.php/script_sci_serial/pid_0213-1285/Ing_es/nr

AVANCES EN PERIODONCIA E IMPLANTOLOGÍA ORAL

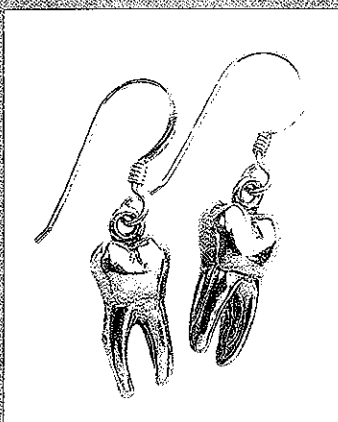
http://scielo.isciii.es/scielo.php/script_sci_serial/pid_1130-1457/Ing_es/nr



Dental public health



Healthy smiles promoted in Lancashire p489



BDA launches charity gifts and novelties p490

BDJ

BRITISH DENTAL JOURNAL
incorporating DENTAL BUSINESS

COVER IMAGE

DENTAL PUBLIC HEALTH

The cover images in BDJ volume 209 each depict one of the GDC dental specialties. This issue's cover represents dental public health.

Cover illustration by Kavel Rafferty through Illustration Ltd
www.illustrationweb.com

EDITORIAL

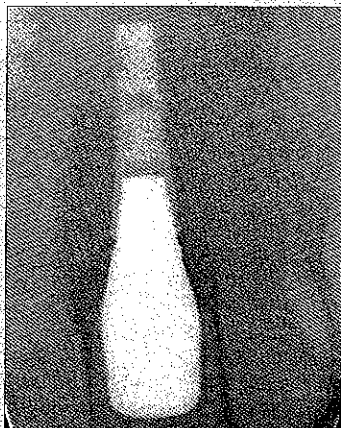
- 483 A risky business**
Stephen Hancocks OBE

LETTERS

- 485 The risk does exist**
486 Apprehension about the future
487 Stock alert
Fluoride content
488 Visual phenomena
Musculoskeletal strains

NEWS

- 489 Healthy smiles promoted in Lancashire**
GDC encourages dialogue with registrants
490 BDA launches charity gifts and novelties
Research into new approaches to oral cancer
Musical teeth DVD is a success
491 Growth factor regenerates tooth supporting structures
Derek Lawton Cowley
They'll be brushing round the mountain
Glory for Glasgow dental centre
Dental Schools Council meeting



Radiograph showing bone in close contact with the titanium implant surface p499



The launch of an oral health promotion programme in 2007 p523

OPINION

- 493 Unethical aspects of homeopathic dentistry
D. Shaw

PRACTICE

- 499 Risk management in clinical practice. Part 9. Dental implants
VERIFIABLE CPD PAPER
R. M. Palmer

ABSTRACTS

- 509 A selection of abstracts of clinically relevant papers from other journals *John R. Radford*
Emotional intelligence of dental students and patient satisfaction
The impact of oral contraceptives on women's periodontal health and the subgingival occurrence of aggressive periodontopathogens and *Candida* species
The efficacy and safety of articaine versus lignocaine in dental treatments: a meta-analysis
Occurrence of paresthesia after dental local anesthetic administration in the United States

RESEARCH SUMMARIES

- 510 Summary of: 'Clinical decision making by dentists working in the NHS General Dental Services since April 2006'

ONLINE RESEARCH PAPERS

- E17 Clinical decision making by dentists working in the NHS General Dental Services since April 2006
B. J. B. Davies, F. Macfarlane
DOI: 10.1038/sj.bdj.2010.1080

EDUCATION

- 513 The Sheffield outreach teaching programme VERIFIABLE CPD PAPER
M. Smith, M. A. Lennon, P. G. Robinson

GENERAL

- 523 'Love Teeth Day' campaign in China and its impact on oral public health – the twentieth anniversary
J. Dai, Y. Hao, G. Li, D. Hu, Y. Zhao

CLINICAL ORAL IMPLANTS RESEARCH

Volume 21 · Number 12 · December 2010

Contents

Original Articles

- Prospective study to estimate mandibular cancellous bone density using large-volume cone-beam computed tomography 1309 *M. Naitoh, A. Hirukawa, A. Katsumata & E. Ariji*
- Flap vs. "flapless" surgical approach at immediate implants: a histomorphometric study in dogs 1314 *M. Caneva, D. Botticelli, L. A. Salata, S. L. S. Souza, E. Bressan & N. P. Lang*
- Early healing after elevation of the maxillary sinus floor applying a lateral access: a histological study in monkeys 1320 *A. Scala, D. Botticelli, I. G. Rangel Jr, J. A. de Oliveira, R. Okamoto & N. P. Lang*
- Spontaneous early exposure and marginal bone loss around conventionally and early-placed submerged implants: a double-blind study 1327 *M. C. Çehreli, A. M. Kökat, S. Uysal & K. Akca*
- Comparison of a synthetic bone substitute composed of carbonated apatite with an anorganic bovine xenograft in particulate forms in a canine maxillary augmentation model 1334 *D. K. Kim, S.-J. Lee, T. H. Cho, P. Hui, M.-S. Kwon & S. J. Hwang*
- Alumina-reinforced zirconia implants: survival rate and fracture strength in a masticatory simulation trial 1345 *R.-J. Kohal, M. Wolkewitz & C. Mueller*
- Effects of nicotine on gene expression and osseointegration in rats 1353 *S. Yamano, J. A. Berley, W. P. Kuo, G. O. Gallucci, H.-P. Weber & C. Sukotjo*
- Clinical performance of provisional screw-retained metal-free acrylic restorations in an immediate loading implant protocol: a 242 consecutive patients' report 1360 *J.-M. Suarez-Feito, A. Sicilia, J. Angulo, S. Banerji, I. Cuesta & B. Millar*
- An animal model for sinus floor elevation with great elevation heights. Macroscopic, microscopic, radiological and micro-CT analysis: *ex vivo* 1370 *F. Stelzle & K.-U. Benner*
- Effect of a macroscopic groove on bone response and implant stability 1379 *H.-I. Yoon, I.-S. Yeo & J.-H. Yang*
- Radiographic evaluation of marginal bone levels during healing period, adjacent to parallel-screw cylinder implants inserted in the posterior zone of the jaws, placed with flapless surgery 1386 *H.-J. Nickenig, M. Wichmann, K. A. Schlegel, E. Nkenke & S. Eitner*
- Vertical augmentation with interpositional blocks of anorganic bovine bone vs. 7-mm-long implants in posterior mandibles: 1-year results of a randomized clinical trial 1394 *P. Felice, G. Pellegrino, L. Checchi, R. Pistilli & M. Esposito*
- Onlay bone grafting of the mandible after periosteal expansion with an osmotic tissue expander: an experimental study in rabbits 1404 *P. Abrahamsson, S. Isaksson, M. Gordh & G. Andersson*
- Short Communication**
- A simple method for enhancing cell adhesion to hydroxyapatite surface 1411 *S. Bertazzo, W. F. Zambuzzi, D. D. P. Campos, C. V. Ferreira & C. A. Bertran*

This journal is available online at Wiley Online Library.
Visit wileyonlinelibrary.com/journal/cir to search the
articles and register for table of contents e-mail alerts.

Clinical Oral Implants Research is covered by Current Contents®/Clinical Medicine,
the Science Citation Index®, and SciSearch®.

Printed in Malaysia
ISSN:0905-7161

Community Dentistry & Oral Epidemiology Volume 38(6)
December 2010

Intergenerational continuity in oral health: a review. p. 479-486

Shearer, D.M. ; Thomson, M. W.

Clinical and community risk models of incident tooth loss in postmenopausal women from the Buffalo Osteo Perio Study. p. 487-497

Bole, C. ; Wactawski-Wende, J.; Hovey, K. M.

The influence of peer social networks on toothbrushing behaviour in Iranian adolescents in Mashhad. p. 498-506

Dorri, M.; Sheiham, A.; Watt, R.

Attitudes towards oral health among parents of 6-year-old children at risk of developing caries. p. 507-520

Vermaire, J. H. ; Hoogstraten, J. ; Van Loveren, C.

Prevalence of dental erosion in children: a national survey. p. 521-526

Arnadottir, I. B.; Holbrook, P. W.; Eggertsson, H.

Calibration of self-reported oral health to clinically determined standards.

p. 527-539

Liu, H.; Maida, C.A. ; Spolsky, V. W.

Public awareness of oral cancer, of oral potentially malignant disorders and of their risk factors in some rural populations in Sri Lanka. p. 540-548

Amarasinghe, H. K.; Usgodaarachchi, U. S.; Johnson, N.W.

Parameters associated with active caries lesions assessed by two different visual scoring systems on occlusal surfaces of primary molars - a multilevel approach. p. 549-558

Braga, M. M. ; Martignon, S.; Ekstrand, K.R.

Severe dental fluorosis and jowar consumption in Karnataka, India.

p. 559-567

Chandrashekar, J.; Thankappan, K. R.; Sundaram, K. R.

DA DENTAL ABSTRACTS

<u>Commentary</u>	284	Oral Infections	309
The rewards of humanitarian service	284	Managing odontogenic infections	
By Richard L. Call, DMD, MS			
Living Talmudic principles	287	Oral Medicine	310
		Swine flu	
Extracts	287	Oral Surgery	313
Frailty test predicts outcomes in older patients		Antiemetics	
<u>The Front Office</u>	288	Orthodontics	314
Recovering from the recession	288	Retention regimens	
Fresh starts	289	Pediatric Dentistry	314
		Chemomechanical caries removal	
Extracts	290	Psychiatry	315
PSA test a "hugely expensive public health disaster"		Dental patients with psychiatric illnesses	
<u>The Big Picture</u>	291	Restorative Dentistry	318
Pay-for-performance programs	291	Natural crown pontic	
Antibiotics	293	Sleep Disorders	320
		Sleep-disordered breathing	
Extracts	294	Temporomandibular Disorders	322
Sugar helps the injections go in		Hypnosis	
<u>Hands On</u>	295	<u>Inquiry</u>	324
Cracked Tooth Syndrome	295	Bisphosphonates	324
Etiology and diagnosis of cracked tooth syndrome		Oral implants	
Dental Imaging	297	Dental Materials	325
Conebeam computed tomography		Biodegradation of acrylic-based resins	
Dental Materials	299	Geriatric Dentistry	327
Repairing resin-modified glass-ionomer cements		Defining oral neglect in nursing homes	
Endodontics	300	Implants	329
Root canal or implant?		Crown-implant ratio	
Geriatric Dentistry	303	Nutrition	331
Treating older patients		Low income, edentate, and poorly nourished	
Implants	305	Oral Medicine	331
Implant placement in infected sites		Tooth loss and ischemic heart disease	
Obstructive Sleep Apnea	307	Orthodontics	332
Adjustable mandibular repositioning appliance in partly edentulous patient		Root resorption and orthodontic therapy	

Pediatric Dentistry	333
ADHD and dental trauma	
Preventive Dentistry	335
Dental prophylaxis to reduce caries and gingivitis	
Public Health	335
Comprehensive caries prevention	
Extracts	336
Cocoa for stroke	

Journals Represented

Access
 Acta Odontologica Scandinavica
 Alpha Omegan
 American Journal of Orthodontics and Dentofacial Orthopedics
 British Dental Journal
 Community Dentistry and Oral Epidemiology
 Dental Traumatology
 European Journal of Dental Education
 Evidence-based Dentistry
 Gerodontology
 International Journal of Oral and Maxillofacial Surgery
 Journal of the American Dental Association
 Journal of Dental Research
 Journal of Evidence-based Dental Practice
 Journal of Oral and Maxillofacial Implants
 Journal of Oral and Maxillofacial Surgery
 Journal of Oral Pathology and Medicine
 Journal of Oral Rehabilitation
 Journal of Periodontal Research
 Journal of Prosthodontics
 Orthodontics and Craniofacial Research

We Need Your Photos!

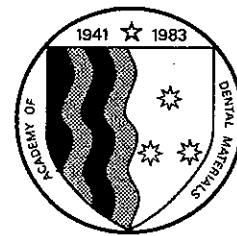
If you have a photograph that you would like to see on the cover of *Dental Abstracts*, please send us a print or slide for consideration. Appropriate photographs should have a vertical orientation. Please submit your photographs to *Dental Abstracts*, Attn: Jane Ryley, Periodicals, Elsevier, 3251 Riverport Lane, Maryland Heights, MO 63043. Tel: 314-447-9226. When submitting your photographs, please be sure to include your telephone number and e-mail contact information.

Notes

To facilitate the use of *Dental Abstracts* as a reference tool, all illustrations and tables included in this publication are now identified as they appear in the original article. This change is meant to help the reader recognize that any illustration or table appearing in *Dental Abstracts* may be only one of many in the original article. For this reason, figure and table numbers will often appear to be out of sequence within *Dental Abstracts*.

Standard Abbreviations

The following terms are abbreviated: acquired immunodeficiency syndrome (AIDS), human immunodeficiency virus (HIV), and temporomandibular joint (TMJ).



Contents

Review

- 1119 **Shade compatibility of esthetic restorative materials—A review**
Y.-K. Lee, B. Yu, S.-H. Lee, M.-S. Cho, C.-Y. Lee, H.-N. Lim

Original articles

- 1127 **Impedance methodology: A new way to characterize the setting reaction of dental cements**
C. Villat, V.X. Tran, N. Pradelle-Plasse, P. Ponthiaux, F. Wenger, B. Grosgeat, P. Colon
- 1133 **Fatigue of zirconia and dental bridge geometry: Design implications**
G.D. Quinn, A.R. Studart, C. Hebert, J.R. VerHoef, D. Arola
- 1137 **Measure of microhardness, fracture toughness and flexural strength of N-vinylcaprolactam (NVC)-containing glass-ionomer dental cements**
A. Moshaverinia, W.A. Brantley, W.W.L. Chee, N. Rohpour, S. Ansari, F. Zheng, R.H. Heshmati, J.A. Darr, S.R. Schricker, I.U. Rehman
- 1144 **Polymerization stress, shrinkage and elastic modulus of current low-shrinkage restorative composites**
L.C.C. Boaro, F. Gonçalves, T.C. Guimarães, J.L. Ferracane, A. Versluis, R.R. Braga
- 1151 **Expression of CYP450-2E1 and formation of 2,3-epoxymethacrylic acid (2,3-EMA) in human oral cells exposed to dental materials**
F.-X. Reichl, M. Seiss, J. Buters, H. Behrendt, R. Hickel, J. Durner
- 1157 **Tensile and bending fatigue of the adhesive interface to dentin**
R. Belli, L.N. Baratieri, M. Braem, A. Petschelt, U. Lohbauer
- 1166 **Factors influencing marginal cavity adaptation of nanofiller containing resin composite restorations**
H. Takahashi, W.J. Finger, K. Wegner, A. Utterodt, M. Komatsu, B. Wöstmann, M. Balkenhol
- 1176 **Eight-year clinical evaluation of a 2-step self-etch adhesive with and without selective enamel etching**
M. Peumans, J. De Munck, K.L. Van Landuyt, A. Poitevin, P. Lambrechts, B. Van Meerbeek
- 1185 **Fracture toughness of two dentin adhesives**
K. Howard, K.-J.M. Söderholm

Online only articles

- e237 **The effect of Electro Discharge Machining (EDM) on the corrosion resistance of dental alloys**
A. Ntasi, W.D. Mueller, G. Eliades, S. Zinelis
- e246 **Non-destructive three-dimensional evaluation of pores at different welded joints and their effects on joints strength**
R. Nomoto, Y. Takayama, F. Tsuchida, H. Nakajima

Indexing Services

Dental Materials is indexed by *Index Medicus*, *BIOSIS*, *Current Contents*, *SciSearch*, *Research Alert*, *UnCover*, *Reference Update*, *UMI*, *Silver Platter*, *Excerpta Medica*, *CAB International* and *CINAHL*. The journal is available in microfilm from *UMI*.



This journal is part of Science Direct's free alerting service which sends tables of contents and favourite topics for Elsevier books and journals. You can register by clicking "Alerts" at www.sciencedirect.com



ELSEVIER

Amsterdam • Boston • London • New York • Oxford • Paris • Philadelphia • San Diego • St. Louis

European Journal of Orthodontics

Volume 32 Issue 6 December 2010

Articles

Wolfram Hahn, Antonia Zapf, Henning Dathe,
Torquing an upper central incisor with aligners—acting forces and biomechanical principles P.607-613

Young-Moon Cho, Jung-Yul Cha, and Chung-Ju Hwang
The effect of rotation moment on the stability of immediately loaded orthodontic miniscrews: a pilot study P.614-619

Yasuhiro Namura, Takashi Tsuruoka, Chiyako Ryu,
Usefulness of orthodontic adhesive-c

Min-Ching Wu, Kuo-Sheng Cheng, Yen-Ting Chen,
Three-dimensional analysis of biplanar cephalograms P.627-632

Hideki Ioi, Shunsuke Nakata, and Amy L. Counts
Influence of gingival display on smile aesthetics in Japanese P.633-637

Serene Adnan Badran
The effect of malocclusion and self-perceived aesthetics on the self-esteem of a sample of Jordanian adolescents P.638-644

Markus Bingmer, Volkan Özkan, Jong-min Jo,
A new concept for the cephalometric evaluation of craniofacial patterns (multiharmony) P.645-654

Zeynep Atalay and Tuba Tortop
Dentofacial effects of a modified tandem traction bow appliance P.655-661

Kirsi Pirilä-Parkkinen, Heikki Löppönen, Peter Nieminen,
Cephalometric evaluation of children with nocturnal sleep-disordered breathing
P.662-671

Alev Aksoy Doğan, Emel Sari, Ersin Uskun, and Aynur Medine Şahin Sağlam
Comparison of orthodontic treatment need by professionals and parents with different socio-demographic characteristics P.672-676

Tadashi Fujita, Mao Nakano, Junji Ohtani,
Expression of Sox 9 and type II and X collagens in regenerated condyle P.677-680

Koji Noda, Chihiro Arai, and Yoshiki Nakamura
Root resorption after experimental tooth movement using superelastic forces in the rat P.681-687

Farzaneh Ahrari, Jalil Tavakkol Afshari, Maryam Poosti, and Azam Brook
Cytotoxicity of orthodontic bonding adhesive resins on human oral fibroblasts
P.688-692

Ruo-ping Jiang, J.P. McDonald, and Min-kui Fu
Root resorption before and after orthodontic treatment: a clinical study of contributory factors P.693-697

Ying Yang, Yanqi Yang, Xiaotong Li,
Functional analysis of core binding factor a1 and its relationship with related genes expressed by human periodontal ligament cells exposed to mechanical stressP.698-705

Devrim Isci, Tamer Turk, and Selma Elekdag-Turk
Activation–deactivation rapid palatal expansion and reverse headgear in Class III cases P.706-715

Koray Halicioğlu, Nihat Kiliç, İbrahim Yavuz, and Bülent Aktan
Effects of rapid maxillary expansion with a memory palatal split screw on the morphology of the maxillary dental arch and nasal airway resistance P.716-720

Georgios Tsorovas and Agneta Linder-Aronson Karsten
A comparison of hand-tracing and cephalometric analysis computer programs with and without advanced features—accuracy and time demands P.721-728

Nihat Kiliç, Mevlüt Celikoglu, and Hüsamettin Oktay
Effects of the functional regulator III on profile changes in subjects with maxillary deficiency P.729-734

Ken Miyazawa, Misuzu Kawaguchi, Masako Tabuchi, and Shigemi Goto
Accurate pre-surgical determination for self-drilling miniscrew implant placement using surgical guides and cone-beam computed tomography P.735-740

M. E. Cooke and M. Sherriff
Debonding force and deformation of two multi-stranded lingual retainer wires bonded to incisor enamel: an *in vitro* study P.741-746

Simona Tecco, Stefano Tetè, and Felice Festa
Electromyographic evaluation of masticatory, neck, and trunk muscle activity in patients with posterior crossbites P.747-752

Book Reviews

Adriano Crismani **Implant dentistry. A practical approach, 2nd edn. (2010)**
P.753

Terttu Pietilä **Clinical problem solving in dentistry, 3rd edn. (2010)** P.753-754

Implant Dentistry Volume 19(6) pgs. 457-554 December 2010

Editorial This Problem Persists and is Growing. pg. 457 Perel, Morton L. DDS,

Letters to the Editor. pg. 458 Toffler, Michael DDS

In Response:. pg. 459 Fu, Ping-Yuen DDS

Advanced Alveolar Bone Resorption Treated With Implants, Guided Bone Regeneration, and Synthetic Grafting: A Case Report. pg. 460-467

Naruse, K.-I.; Fukuda, M.; Hasegawa, H.

Rehabilitation of Maxillary Anterior Esthetics by Alveolar Distraction Osteogenesis With Immediate Implant Placement: A Case Report. pg. 468-476

Gozneli, Rifat ; Ozkan, Yasar ; Akalin, Z. F.

Replacement of Vertically Root-Fractured Endodontically Treated Teeth With Immediate Implants in Conjunction With a Synthetic Bone Cement. pg. 477-486

Taschieri, S. ; Rosano, G. ; Weinstein, T.

Expression of Osteopontin and Type I Collagen of hFOB 1.19 Cells on Sintered Fluoridated Hydroxyapatite Composite Bone Graft Materials. pg. 487-497

Wu, Cheng-Chei ; Huang, Shun-Te ; Lin, Hong-Ching;

Influence of Arch Shape and Implant Position on Stress Distribution Around Implants Supporting Fixed Full-Arch Prosthesis in Edentulous Maxilla. pg. 498-508

Sagat, G. ; Yalcin, S. ; Gultekin, B.

Implant Primary Stability Determined by Resonance Frequency Analysis in Surgically Created Defects: A Pilot Cadaver Study. pg. 509-519

Chan, H.-L. ; El-Kholy, K. ; Fu, J.H.

Influence of Novel Nano-Titanium Implant Surface on Human Osteoblast Behavior and Growth. pg. 520-531

Tete, S.; Mastrangelo, F. ; Quaresima, R.

A Comparative Pilot Study of Two Dental Implant Metals in a Pig Model. pg. 532-538

Rodella, L. F. ; Favero, G. ; Sala, L.

All-Ceramic Crowns Over Single Implant Zircon Abutment. Influence of Young's Modulus on Mechanics. pg. 539-548

Junior, A. C. F.; Rocha, E.P. ; dos Santos, P. H.; Oliveira de Almeida, E.

SUMARIO

- 3 • Editorial**
- 6 • Entrevista a Antonio García Herrero, decano del Colegio de Arquitectos**
- 10 • Tipos de tratamiento para el déficit óseo alveolar horizontal. Revisión de la literatura**
- 21 • La alegría de una condena**
- 23 • Alfonso Villa Vigil, reelegido presidente del Consejo General de Dentistas de España**
- 24 • Vidas ejemplares**
- 26 • La Demografía de los Dentistas en España**
- 29 • Página humorística de Pedro Bayona**
- 30 • Profesión y Prensa**
- 33 • Cursos**
- 34 • Tablón de Anuncios**



Editorial MIC

Artesiano, s/n. León. C.P. 24010
 Pol. Ind. Trabajo del Camino
 Teléfono: 902 271 902
 Fax: 902 371 902
 E-mail: mic@editorialmic.com
 www.editorialmic.com

DELEGACIÓN EN MURCIA
 968 340 968
 619 656 292

Portada: Diente de Llardana (Pirineos)

Visita nuestra web www.dentistasmurcia.com

Edita: Ilustre Colegio Oficial de Odontólogos y Estomatólogos de la Región de Murcia.
 C/María Zambrano, 4. Edif. Dórico. Bajo. 30007 Murcia Tlf. 968 20 16 65 Fax. 968 20 16 69.
 E-mail: info@dentistasmurcia.com.

Consejo Editorial:

Presidente: Óscar Castro Reino. **Vicepresidente:** José Manuel Granero Marín. **Secretario:** Jesús Santos Ortega. **Vicesecretario:** Óscar Erans Richarte. **Tesorero:** Francisco López López. **Vocales:** Celestino García Alfaro (Distrital de Cartagena). Francisco Javier Hidalgo Tallón. Carlos Mas Bermejo (Comisión Científica). Arsenio Gómez Fernández (Comarca del Noroeste). Fernando Sacristán Molpeceres (Distrital de Lorca). Ernesto Ríos Cano (Jóvenes dentistas). **Vocales supernumerarios:** Ana María Hita Velasco. Cristina Calderón Díaz.
Redactor jefe: Juan Ruiz Parra.

Edición: Editorial MIC · Delegación en Murcia: Dirección: Juan Ruiz Parra. Depósito Legal: LE-1087-1995. ISSN: 1695-5269.
 Editorial MIC · Artesiano, s/n · León · 24010 · Pol. Ind. Trabajo del Camino
 Teléfono: 902 271 902 · Fax: 902 371 902
 E-mail: mic@editorialmic.net · www.editorialmic.com · Delegación en Murcia: 968 340 968 · 619 656 292

Contents

Invited Review Papers

- Biomechanics of the upper airway: Changing concepts in the pathogenesis of obstructive sleep apnea
S.M. Susarla, R.J. Thomas, Z.R. Abramson and L.B. Kaban 1149
- SAPHO syndrome with TMJ involvement: review of the literature and case presentation
A. MCPhillips, L.M. Wolford and D.B. Rodrigues 1160

Leading Clinical Paper

- Effect of induced hypotensive anaesthesia vs isovolaemic haemodilution on blood loss and transfusion requirements in orthognathic surgery: a prospective, single-blinded, randomized, controlled clinical study
J. Ervens, C. Marks, M. Hechler, T. Plath, D. Hansen and B. Hoffmeister 1168

Clinical Papers

- A comparison of autogenous bone graft combined with deproteinized bovine bone and autogenous bone graft alone for treatment of alveolar cleft
N. Thuaksuban, T. Nuntanaranont and P. Pripatanont 1175
- Effect of topical honey on limitation of radiation-induced oral mucositis: an intervention study
B. Khanal, M. Baliga and N. Uppal 1181
- Maxillofacial prosthetic rehabilitation in the UK: a survey of maxillofacial prosthetists' and technologists' attitudes and opinions
M.M. Hatamleh, C. Haylock, J. Watson and D.C. Watts 1186
- Clinical study on prognostic factors for autotransplantation of teeth with complete root formation
T. Sugai, M. Yoshizawa, T. Kobayashi, K. Ono, R. Takagi, N. Kitamura, T. Okiji and C. Saito 1193
- Intralesional injection of triamcinolone hexacetonide as an alternative treatment for central giant-cell granuloma in 21 cases
R.L.M. Nogueira, R.C. Teixeira, R.B. Cavalcante, R.A. Ribeiro and S.H.B. Rabenhosrt 1204

Research and Emerging Technologies

- Power modulation contrast enhanced ultrasound for postoperative perfusion monitoring following free tissue transfer in head and neck surgery
S. Sharma, R. Anand, M. Hickman, R. Senior, S. Walji, P.L. Ramchandani, D. Culliford, V. Ilankovan and K. Greaves 1211
- Bone regeneration by octacalcium phosphate collagen composites in a dog alveolar cleft model
K. Matsui, A. Matsui, T. Handa, T. Kawai, O. Suzuki, S. Kamakura and S. Echigo 1218

Technical Note

- Haptic model fabrication for undergraduate and postgraduate teaching
J.T.H. Lambrecht, D. Berndt, A.M. Christensen and M. Zehnder 1226

Case Reports

- Calibre-persistent labial artery: often misdiagnosed as a mucocoele
N.M.M.N.M. Rosdy, N.A. Firth and A.M. Rich 1230



The authors, editors, owners and publishers do not accept any responsibility for any loss or damage arising from actions or decisions based on information contained in this publication; ultimate responsibility for the treatment of patients and interpretation of published material lies with the medical practitioner. The opinions expressed are those of the authors and the inclusion in this publication of material relating to a particular product, method or technique does not amount to an endorsement of its value or quality, or of the claims made by its manufacturer.

Abstracted/Indexed by:

Biological Abstracts/BIOSIS, Current Contents: Clinical Medicine, EMBASE/Excerpta Medica, Index Medicus/MEDLINE, Medical Documentation Service, Research Alert, Science Citation Index, SciSearch

Continued over

A rare cause of a parotid mass: spontaneous pseudoaneurysm of the superficial temporal artery	
N.R. Woodhouse, G. Gok, S. Saha and D.C. Howlett	1234
Arthroscopically guided removal of large solitary synovial chondromatosis from the temporomandibular joint	
X.-Y. Cai, C. Yang, M.-J. Chen, B. Jiang and B.-L. Wang	1236

Abstracts

Abstracts from international literature	1240
Thanks to Reviewers, 2010	1242

Calendar I

International News/IAOMS II

The *International Journal of Oral and Maxillofacial Surgery* offers a rapid publication of six weeks from acceptance. Forthcoming articles, accepted for publication, can be accessed at <http://www.sciencedirect.com>

- 491 Guest Editorial: Just Imagine . . . A Short Tribute to Nelson Mandela**
C. Peter Owen
- 493 Survival of Zirconia- and Metal-Supported Fixed Dental Prostheses: A Systematic Review**
Siegward D. Heintze/Valentin Rousson
- 503 Questionnaire-Based Study on Sleep-Disordered Breathing Among Edentulous Subjects in a University Oral Health Center**
Hiroko Tsuda/Fernanda R. Almeida/Joanne N. Walton/Alan A. Lowe
- 507 Early Loading of Fixture Original Implants with Mandibular Overdentures—
A Preliminary Report on a Prospective Study**
Nikolai J. Attard/Mark Diacono
- 513 Virtual Transplantation in Designing a Facial Prosthesis for Extensive Maxillofacial Defects
that Cross the Facial Midline Using Computer-Assisted Technology**
Zhi-hong Feng/Yan Dong/Shi-zhu Bai/Guo-feng Wu/Yun-peng Bi/Bo Wang/Yi-min Zhao
- 521 Validation of the Eichner Index in Relation to Occlusal Force and Masticatory Performance**
Kazunori Ikebe/Ken-ichi Matsuda/Shunsuke Murai/Yoshinobu Maeda/Takashi Nokubi
- 525 Evaluation of the Precision of Three Implant Transfer Impression Techniques Using
Two Elastomeric Impression Materials**
Tamer Mohamed Nasr Mostafa/Mohamed Nabeel Mohamed Elgendy/
Nahed Ahmed Kashef/Maha Mostafa Halim
- 529 Chronic Pain Severity and Depression/Somatization Levels in TMD Patients**
Daniele Manfredini/Laura Borella/Lorenzo Favero/Giuseppe Ferronato/Luca Guarda-Nardini

- 535 Statistical Analysis of the Diachronic Loss of Interproximal Contact Between Fixed Implant Protheses and Adjacent Teeth**
Hidehiro Koori/Keizo Morimoto/Yoshihiro Tsukiyama/Kiyoshi Koyano
- 541 Complete Edentulism and Socioeconomic Factors in a Jordanian Population**
Ziad N. AL-Dwairi
- 544 Preliminary Longitudinal Report on Symptom Outcomes in Symptomatic and Asymptomatic Women with Imaging Evidence of Temporomandibular Joint Arthritic Changes**
Marc Schmitter/Katrin Wacker/Maria Pritsch/Nikolaos Nikitas Giannakopoulos/Christina Klose/
Clovis Faggion/Bodo Kress/Michael Leckel/Peter Rammelsberg
- 552 Hydrophilicity of Unset and Set Elastomeric Impression Materials**
Frank Rupp/Jürgen Geis-Gerstorfer
- 555 Five-Year Follow-up of Implant-Supported Y-TZP and ZTA Fixed Dental Protheses. A Randomized, Prospective Clinical Trial Comparing Two Different Material Systems**
Christel Larsson/Per Vult von Steyern
- 562 Applicability of Zirconia Dental Protheses for Metal Allergy Patients**
Bilge Gökçen-Röhlig/Alp Saruhanoglu/Ebru Demet Çifter/Gulumser Evlioglu
- 566 Effect of Tilted and Short Distal Implants on Axial Forces and Bending Moments in Implants Supporting Fixed Dental Protheses: An In Vitro Study**
Toru Ogawa/Sandra Dhaliwal/Ignace Naert/Atsushi Mine/Mats Kronstrom/Keiichi Sasaki/Joke Duyck
- 574 Index, Volume 23, 2010**
- 586 Upcoming Events**

SUMARIO



pág. 239

OPINIÓN

- 238 **Editorial.** El dentista "procusteo"
Felipe Sáez Castillo

EN PORTADA

- 239 **Asma y caries.** ¿Hay relación entre el asma y la caries dental? Revisión bibliográfica y evaluación crítica
G. Maupomé, J.D. Shulman, C.E. Medina-Solis, O. Ladeinde



PRÁCTICA CLÍNICA

- 253 **Revisión.** Córdilo bífido mandibular. ¿Un trastorno de propio derecho?
S. Sala-Pérez, E. Vázquez-Delgado, A. Rodríguez-Baeza, C. Gay-Escoda



INVESTIGACIÓN

- 263 **Hipersensibilidad dentinaria.** Tratando la hipersensibilidad dentinaria. Decisiones terapéuticas de los dentistas de la red PRECEDENT del noroeste de EE.UU.
J. Cunha-Cruz, J.C. Wataha, L. Zhou, W. Manning, M. Trantow, M.M. Bettendorf, L.J. Heaton, J. Berg



- 272 **Artículo español.** Guía de actuación en pacientes odontológicos anticoagulados en Atención Primaria
J.M. Rodríguez Zafra, J.A. Casero Nieto



FORMACIÓN CONTINUADA

- 277 El programa de Educación Dental Continuada de JADA, dirigido a todos los odontoestomatólogos licenciados en España, ofrece a los lectores la oportunidad de obtener créditos de Educación Continuada.

Oxygen tension modulates the cytokine response of oral epithelium to periodontal bacteria. pg. 1039-1048

Grant, M. M. ; Kolamunne, R. T. ; Lock, F. E.

Cytokine levels in sites of chronic periodontitis of poorly controlled and well-controlled type 2 diabetic subjects. pg. 1049-1058

Santos, V. R. ; Ribeiro, F. V.; Lima, J. A.

Overweight and obesity weakly predict the development of periodontal infection. pg. 1059-1067 Saxlin, T. ; Ylostalo, P. ; Suominen-Taipale, L.

Rheumatoid arthritis and salivary biomarkers of periodontal disease. pg. 1068-1074 Mirrielees, J. ; Crofford, L. J. ; Lin, Y.

Review Article: Periodontal disease and pre-eclampsia: a systematic review. pg. 1075-1087 Kunnen, A. ; Van Doormaal, J. J. ; Abbas, F.

Validation of human periodontal ligament-derived cells as a reliable source for cytotherapeutic use. pg. 1088-1099 Iwata, T. ; Yamato, M. ; Zhang, Z.

Enamel matrix derivative proteins for the treatment of proximal class II furcation involvements: a prospective 24-month randomized clinical trial. pg. 1100-1109 Casarin, R. C. V.; Del Peloso Ribeiro, E.; Nociti, F. H.

Evidence-based periodontal plastic surgery: an assessment of quality of systematic reviews in the treatment of recession-type defects. pg. 1110-1118 Chambrone, L. ; Faggion, C. M. ; Pannuti, C. M.

A split-mouth comparative study up to 16 years of two screw-shaped titanium implant systems. pg. 1119-1127

Jacobs, R. ; Pittayapat, P. ; Van Steenberghe, D.

Peri-implant reconstruction using autologous periosteum-derived cells and guided bone regeneration. pg. 1128-1136

Ribeiro, F. V. ; Suaid, F. Ferreira ; Ruiz, K. G. S.

Immediately loaded fixed maxillary implant treatment for a patient with advanced periodontal disease: A clinical report. pg. 353-358 Binon, P.

Management of a failed mandibular staple implant: A clinical report. pg. 359-363 Ettinger, R. L.; Fakhry, A.

Difference in opalescence of restorative materials by the illuminant. pg. 363 Abstract

A randomized clinical trial to compare diagnostic casts made using plastic and metal trays. pg. 364-371 Damodara, E.K.; Litaker, M.S.; Rahemtulla, F.

Peri-implant bone level around implants with platform-switched abutments. pg. 371 Abstract

The effect of repeated firings on the color of an alumina ceramic system with two different veneering porcelain shades. pg. 372-378
Sahin, V.; Uludag, B.; Usumez, A.

Influence of post material and length on endodontically treated incisors: An in vitro and finite element study. pg. 379-388 Chuang, S.F.; Yaman, P.; Herrero, A.

Altered vertical dimension of occlusion: A comparative retrospective pilot study of tooth- and implant-supported restorations. pg. 388 Abstract

Cyclic fatigue properties of cobalt-chromium alloy clasps for partial removable dental prostheses. pg. 389-396 Cheng, H.; Xu, M.; Zhang, H.

Bone changes around early loaded chemically modified sandblasted and acid-etched surfaced implants with and without a machined collar: A radiographic and resonance frequency analysis in the canine mandible. pg. 396 Abstract

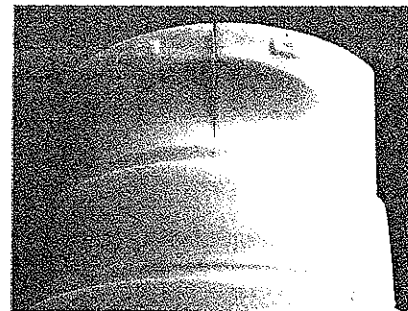
A technique for converting an existing denture into a cast metal-reinforced implant-retained overdenture. pg. 397-400
Orenstein, I.H.; Weinstein, B.F.; Gelman, A.S.

Fabrication of a modified repositioning key for relining provisional restorations. pg. 401-402 Roe, P.; Patel, R.D.

Clínica y práctica

182 **Modificación de la luminosidad en dientes en los que es difícil apreciar su modificación de color tras ser sometidos a tratamiento blanqueador**

José Amengual Lorenzo
Leopoldo Forner Navarro
Pere Riutord Sbert



186 **Hemangioma capilar ulcerado en mucosa palatal. Caso clínico y revisión de la literatura**

López-Valverde Centeno, A.
Gómez de Diego, R.
Montero, J.
García Macías, C.
Macedo, C.



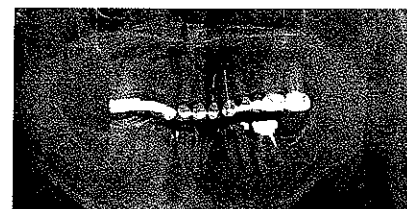
192 **Aplicación clínica del ionómero de vidrio como material restaurador**

Mateos-Palacios, R.
Lucena, C.
Gil, JA.
Navajas, JM.
Pulgar, R.



202 **La importancia de realizar un buen diagnóstico en las rehabilitaciones orales**

Dr. Leonardo Bortheiry Schiaffino
Dra. Jordina Soler-Casagemas Garriga



Actualidad

215

Anunciantes en este número

Bit dental (p. 219)
Defcon (interior contraportada)
Dentsply (p. 181)
GC (portada)
Heraeus (p. 217)
Ivoclar Vivadent (p. 177)
King Dental (p. 215)
Laboratorios Normon (contraportada)

Osteogenos (interior portada)
Puntex (p. 189)
SEI (p. 191)

Encartes:
Zirkonzahn
Zhermack

©OPERATIVE DENTISTRY, Inc.

EDITORIAL

- The Art and Evidence?
JA Platt 597

CLINICAL RESEARCH

- Three-year Clinical Evaluation of Cuspal Coverage with Combined Composite-Amalgam in Endodontically-treated Maxillary Premolars
F Shafiei • M Memarpour • M Doozandeh 599

LABORATORY RESEARCH

- Effect of Accelerated Aging on the Color and Opacity of Resin Cements
M Ghavam • M Amani-Tehran • M Saffarpour 605
- Effect of Oxalate Desensitizer on the Durability of Resin-Bonded Interfaces
ASMA Silva • J Malcarne-Zanon • RM De Carvalho • MC Alves • MF De Goes • A Anido-Anido • MR Carrilho ... 610
- Effect of Chlorhexidine Application Methods on Microtensile Bond Strength to Dentin in Class I Cavities
YE Chang • D-H Shin 618
- Effect of Surface Preparation on Bond Strength of Resin Luting Cements to Dentin
CKY Yiu • F Peerzada • N Hiraishi • FC Tay • N King 624
- Protective Effect of Resin Coating on the Microleakage of Class V Restorations Following Treatment with Carbamide Peroxide *In Vitro*
H Yu • Q Li • T Attin • Y Wang 634
- In Vivo* and *In Vitro* Evaluations of Microleakage Around Class I Amalgam and Composite Restorations
T Alptekin • F Ozer • N Unlu • N Cobanoglu • MB Blatz 641
- Degree of Conversion of Etch-and-Rinse and Self-etch Adhesives Light-cured Using QTH or LED
AL Faria-e-Silva • AF Lima • RR Moraes • E Piva • LR Martins 649
- Bond Strength Comparison of Amalgam Repair Protocols Using Resin Composite in Situations With and Without Dentin Exposure—*M Özcan • G Schoonbeek • B Gökçe • E Çömlekoglu • M Dünder* 655
- Effect of Pre-heated Composites and Flowable Liners on Class II Gingival Margin Gap Formation
C Sabatini • U Blunch • G Denehy • C Munoz 663
- Influence of Prolonged Light-curing Time on the Shear Bonding Strength of Resin to Bleached Enamel
M Hussain • Y Wang 672
- The Effect of Oxalate Desensitizers on the Microleakage of Resin Composite Restorations Bonded by Etch and Rinse Adhesive Systems—*F Shafiei • M Motamed • AA Alavi • B Namvar* 682
- Adhesive Quality of Self-adhesive and Conventional Adhesive Resin Cement to Y-TZP Ceramic Before and After Aging Conditions
SP Passos • LG May • DC Barca • M Özcan • MA Bottino • LF Valandro 689

DEPARTMENTS

- Faculty Positions 697
- Erratum 697
- Index to Volume 35 for 2010 698

Oral Surgery, Oral Medicine, Oral Pathology, Oral Radiology, &
Endodontics Vol 110(6) December 2010

Creativity, vision, and survival. pg. 681-682 Rosenlicht, J. L. Editorial

A diffuse swelling of the left side of the face. pg. 685-690 P., Helder A.; Pontes, F. S.

Should warfarin be discontinued before a dental extraction? A decision-tree analysis. pg. 691-697 Balevi, B. B.

Buccal pad of fat and its applications in oral and maxillofacial surgery: a review of published literature (February) 2004 to (July) 2009. pg. 698-705 Singh, ; Prasad, K. ; Lalitha, R. M.

General anesthesia increases the risk of bacteremia following dental extractions. pg. 706-712 Barbosa, M.; Carmona, I.T. ; Amaral, B.

Pattern of osteogenesis during onlay bone graft healing. pg. 713-719 Andrade, M. G.; Moreira, D.C.; Dantas, D.B.

Calvarial bone wound healing: a comparison between carbide and diamond drills, Er:YAG and Femtosecond lasers with or without BMP-7. pg. 720-728 Cloutier, M. ; Girard, B.

Bisphosphonate-associated osteonecrosis of the jaws: surgical treatment with ErCrYSGG-laser. Case report. pg. e1-e6 Rugani, P.; Acham, S.D; Truschneegg, A.

On the use of prothrombin complex concentrate in patients with coagulopathy requiring tooth extraction. pg. e7-e10 Morimoto, Y.; Niwa, H.; Nakatani, T.

Classification of chronic orofacial pain: applicability of chronic headache criteria. pg. 729-737 Benoliel, R. ; Eliav, E.,; Sharav, Y.

Overexpression of cyclooxygenase-2 as a biomarker in different subtypes of the oral lichenoid disease. pg. 738-743 Cortes-Ramirez, D.A.; Rodriguez-Tojo, M.; Gainza-Cirauqui, M.L.

Awareness of complications of oral piercing in a group of adolescents and young South African adults. pg. 744-747 Oberholzer, T.G.; George, R.

Oral ulcer associated with alendronate: a case report. pg. e11-e13 Kharazmi, M.; Sjoqvist, K.; Rizk, M.

Up-regulation of EGF receptor and its ligands, AREG, EREG, and HB-EGF in oral lichen planus. pg. 748-754 Kumagai, K.; Horikawa, T.; Gotoh, A.

Overexpression of matrix metalloproteinase (MMP)-1 and -9 in central giant cell lesions of the jaws: implications for clinical behavior. pg. 755-763 Tobon-Arroyave, S. I. ; Mideros-Simarra, S. M.; Castano-Ramirez, L. M.

Correlation between transcription factor Snail1 expression and prognosis in adenoid cystic carcinoma of salivary gland. pg. 764-769 Jiang, J.; Tang, Y. ; Zhu, G.

Autosomal Dominant Mesomandibular Fibro-Osseous Dysplasia. pg. e14 Koutlas, I.; Petryk, A.; Kyrkanides, S.

Primary T-Cell Lymphomas of the Oral Cavity. pg. e14 Eljack, S.; Reich, R.; Kerpel, S.

Epithelioid Hemangioendothelioma of the Oral Cavity: Report Of 2 Cases. pg. e14 Fitzpatrick, S.; Kuklani, R.; Cohen, D.

Melanocytic Nevi of the Oral Cavity: A Clinicopathologic Study of 84 Cases. pg. e14-e15 Ferreira, L.; Kessler, H.; Readinger, A.

CXCL13 In SJoGren Syndrome: A Novel Biomarker of Disease. pg. e15 Kramer, J.; Rothstein, T.

Viral G Protein-Coupled Receptor Up-Regulates Angiopoietin-Like 4, Promoting Angiogenesis and Vascular Permeability in Kaposi Sarcoma. pg. e15 Jham, B.; Ma, T.; Hu, J.

Development of a Well Documented Database for Patients With Oral Bisphosphonate-Related Osteonecrosis of the Jaws. pg. e15 Magliocca, K.; Cohen, R.; Green, J.

Modulation of Jaw Bone Stem Cell Precursors by its Unique Mechanobiology Might Explain its Vulnerability to Bisphosphonate-Related Osteonecrosis of the Jaw. pg. e16 Arany, P.; Umanzor, J.; Pernia, S.

Analysis of Bone Activity of Jaws Using Scintigraphy on Patients Before, During, and After Treatment With Intravenous Bisphosphonates: A Retrospective Study. pg. e16 Handoo, N.; Hellstein, J.; Vincent, S.;

The Histopathology of Chronic Ischemic Bone Disease-Parameters and Disease Classification. pg. e16 Bouquot, J.; McMahon, R.

Noninvasive Detection of Aneuploid Cells can Predict the Malignant Potential of Oral Lichen Planus. pg. e16-e17 Hirshberg, A.; Yarom, N.; Shani, T.;

ZD6474 is an Effective Chemopreventive Agent in the Mouse 4-NQO Model of Oral Carcinogenesis. pg. e17 Lingen, M.; Zhou, G.; Hasina, R.

Isolation of Components of Squamous Cell Carcinoma Parenchyma and Stroma for Functional Studies. pg. e17 Kurago, Z.; Wagner, E.; Ramanathapuram, L.

Loss of Dyskerin Function Disrupts the Accumulation of Subsets of Small Nucleolar RNA and Micro-RNA. pg. e17 Alawi, F.; Lin, P.

Autoantibodies to P63 in a Case of Oral Spindle Cell Squamous Cell Carcinoma. pg. e17-e18 Solomon, L.; Laver, N.; Zoukhiri, D.

Pitfalls in Diagnostic Tests for High-Risk Human Papillomavirus. pg. e18 DeVilliers, P.; Andea, A.; Kerr, E.

The Role of Direct Visual Fluorescent Examination (VELscope) in Tumor Margin Delineation and Routine Screening for Oral Cancer. pg. e18 McNamara, K.; Agrawal, A.; Teknos, T

Keratoameloblastoma and Solid Variant of Keratocystic Odontogenic Tumor. pg. e18 Kratochvil, F.; Stewart, J.; Kleinegger, C.

Bilateral Calcifying Epithelial Odontogenic Tumors of the Mandible: A Case Report and Review of the Literature. pg. e18-e19 McLean, A.; Kleinegger, C.; Kratochvil, F.

DIRECTOR
Dr. Esteban Padullés Roig
EDITOR INTERNACIONAL
Dr. René Horvilleur



Sociedad Española de Implantes

Junta Directiva SEI

PRESIDENTE

Dra. Araceli Morales Sánchez

VICEPRESIDENTE

Dr. Juan Carlos Asurmendi Zulueta

SECRETARIO GENERAL

Dr. Antonio Bowen Antolín

TESORERO

Dr. Pedro Fernández-Palacios Ruiz

VOCALES

Dr. Luis M^o Ilzarbe Querol

Dr. Ignacio Corral Pazos de Provencs

Dra. Inmaculada González Morán

Dr. Rafael Carroquino Cañas

Dr. Armando Badet de Mena

Dr. Fidel San Román Ascaso

RESPONSABLE DE COMUNICACIÓN

Patricia de Lorenzo

patricia.delorenzo@sei-net.net

SECRETARIA TÉCNICA

Sra. Paloma Fernández Gil

paloma.fernandez@sei-net.net

Oficinas y redacción

Orense 51, bajo C. 28020 Madrid

Tel: 915 550 950 - Fax: 915 972 871

infosei@sei-net.net - www.sei-net.net

Edita

Nexus Médica Editores

Avda. Maresme, 44-46 1^o

08918 Badalona (Barcelona)

Tel: 935 510 260 / Fax: 932 136 672

nexus@nexusmedica.com - www.nexusmedica.com

Imprime: Trajecto, S.A.

Depósito Legal: B-16837-1993

ISSN: 1133-1615

SV: 93025R

Indexada en Índice Médico Español

Nota del editor

Las opiniones expresadas en la Revista Española Odontostomatológica de Implantes son exclusivas de los firmantes de los artículos y nunca podrán ser atribuibles a los anunciantes, al editor o al comité de dicha publicación.

Publicación no sujeta a control obligatorio de difusión

Cualquier forma de reproducción, distribución, comunicación pública o transformación de esta obra solo puede ser realizada con la autorización de sus titulares, salvo excepción prevista por la ley. Diríjase a CEDRO (Centro Español de Derechos Reprográficos, www.cedro.org) si necesita fotocopiar o escanear algún fragmento de esta obra.

CARTA INTRODUCCIÓN 48

PROGRAMA 50

PONENCIAS 54

PROGRAMA HIGIENISTAS 73

PROGRAMA PROTÉSICOS 74

COMUNICACIONES ORALES 75

COMUNICACIONES PÓSTER 104

ORIGINALES

Implantes en pacientes con patología sinusal: a propósito de un caso..... 145

Extracción de raíces incluidas con colocación de implantes inmediatos.
Nota técnica 151

REVISIÓN

Bueno, Bonito y... ¿Funciona? Criterios para la selección de un sistema de implantes 156

CASOS CLÍNICOS

Mantenedores de espacio en implantología: mantenedor óseo roscado y mantenedor ortodóncico de composite. A propósito de un caso 166

Carga inmediata en un paciente con Síndrome de Albright utilizando implantes Tramonte 173

Regeneración ósea guiada en área estética del maxilar e inserción simultánea de implantes dentales (Bonelevel®) en los alveolos postextracción con función inmediata 179

FORMACIÓN CONTINUADA 190

NORMAS DE PUBLICACIÓN 197